

# Genoa: 7000327 Viggo Headsail.des

Design Info  
=====

Design File:  
\\Nas\工程部-专用文件\Queenie-跟进客户\Fareast Sails\2023 Order\Need Confrim Order\7000327 Viggo\7000327 Viggo

Initial Design Date: 4/4/2023  
Boat:

Comments:

Client:

Design Data  
=====

## Genoa

### Measurements

Luff geodesic:	35.338Ft
Leech geodesic:	33.561Ft
Foot geodesic:	15.996Ft
Headboard width:	0.098Ft
Luff perpendicular (HLP):	15.141Ft
Upper width (HUW):	1.694Ft
Three-quarter width (HTW):	3.365Ft
Half width (HHW):	7.001Ft
Quarter width (HQW):	10.963Ft
Foot median:	34.013Ft
ORC Headsail area:	256.823Ft?
IRC Headsail area:	256.319Ft?
Surface area:	258.413Ft?
Forestay height:	37.730Ft
J:	11.647Ft

### Draft Stripes

1, Luff: 11.714Ft ; Leech: 10.617Ft ;  
2, Luff: 23.408Ft ; Leech: 21.878Ft ;

### Luff Curve

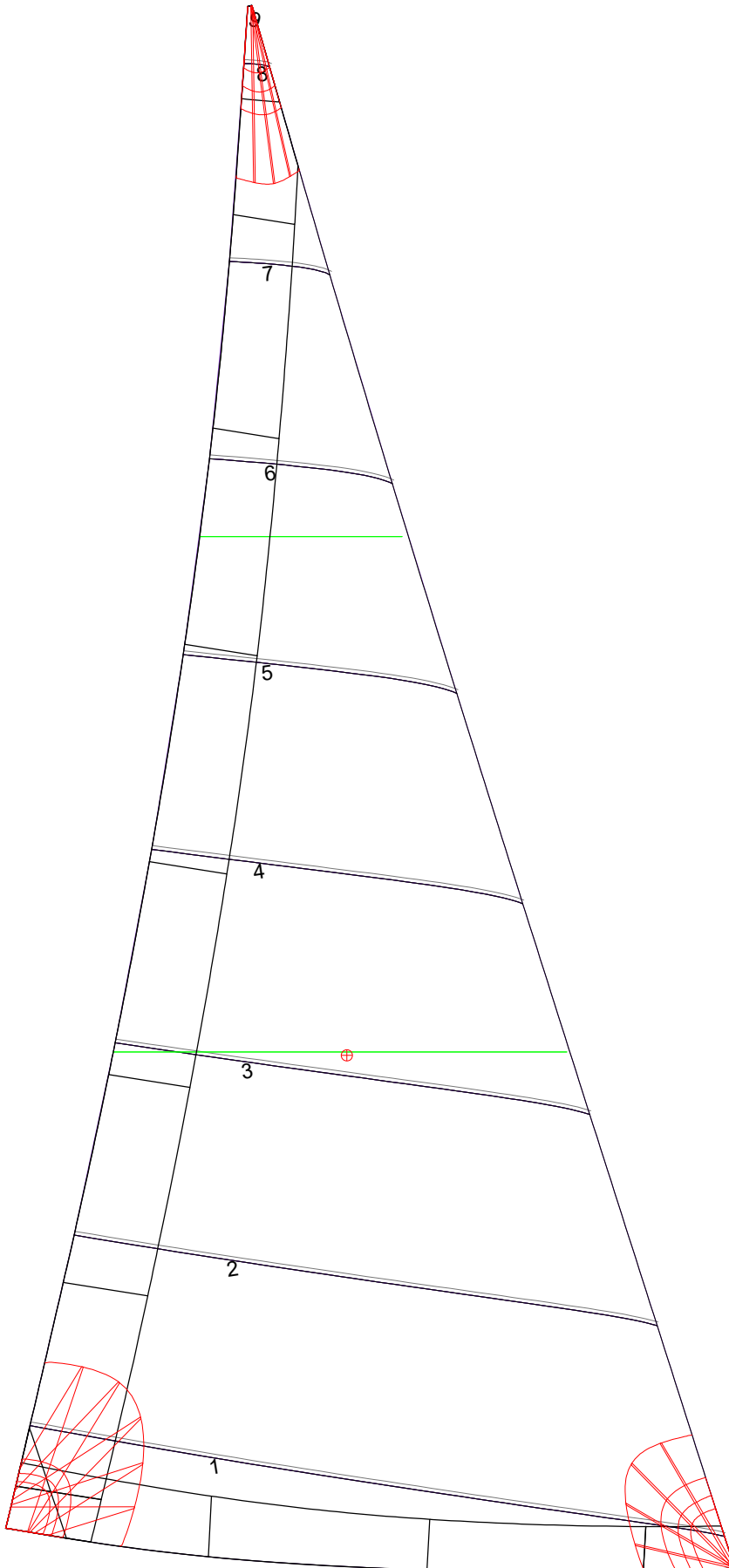
35.331Ft,	0.000Ft
32.395Ft,	0.120Ft
29.148Ft,	0.217Ft
26.290Ft,	0.267Ft
22.966Ft,	0.286Ft
17.582Ft,	0.251Ft
11.483Ft,	0.170Ft
5.972Ft,	0.085Ft
0.000Ft,	0.000Ft

### Fanned Luff (@ 5.00% [0.787Ft])

100% (35.332Ft) :	0.000Ft	-0.000Ft
90% (31.797Ft) :	-0.128Ft	-0.007Ft
80% (28.270Ft) :	-0.223Ft	0.003Ft
70% (24.734Ft) :	-0.270Ft	0.022Ft
60% (21.201Ft) :	-0.278Ft	0.045Ft
50% (17.667Ft) :	-0.255Ft	0.068Ft
40% (14.134Ft) :	-0.212Ft	0.083Ft
30% (10.600Ft) :	-0.161Ft	0.083Ft
20% (7.068Ft) :	-0.106Ft	0.074Ft
10% (3.531Ft) :	-0.053Ft	0.051Ft
0% (0.000Ft) :	0.000Ft	0.000Ft

### Before BSeam

# Genoa: 7000327 Viggo Headsail.des



## Seam Allowances

Zone:	Split	Radial	Cross
Zone: 1	0.000Ft	0.000Ft	0.082Ft
Cover 1	0.082Ft	0.082Ft	0.082Ft
Cover 2	0.082Ft	0.082Ft	0.082Ft
Cover 3	0.000Ft	0.000Ft	0.000Ft
Cover 4	0.000Ft	0.000Ft	0.000Ft

## Edge Excesses

	Luff	Leech	Foot
Sail:	0.000Ft	0.000Ft	0.000Ft
Cover 0	0.230Ft	0.328Ft	0.230Ft
Cover 1	0.230Ft	0.230Ft	0.230Ft
Cover 2	0.000Ft	0.230Ft	0.230Ft
Cover 3	0.000Ft	0.230Ft	0.230Ft

## Total Seam Lengths (Ft)

Horizontal	61.65
Radial/Vertical	0.00
Bi-Radial Split	0.00

## Materials

Material	Area (Ft <sup>2</sup> )	Panels
Material 1	259.19	1,2,3,4,5 6,7,8,9