

Mainsail: 7000321 Andre fullbat Mainsail.des

Design Info
=====

Design File:
\\NAS\Engineering files\Queenie-Customer Order\Fareast Sails\2023 Order\Need to be Confirmed Order\7000321 And

Initial Design Date: 7/9/2023
Boat:

Comments:

Client:

Design Data
=====

Main

Measurements

Luff geodesic:	17.200m
Leech geodesic:	17.933m
Foot geodesic:	5.432m
Head geodesic:	0.135m
Upper width (MUW):	1.143m
Three-quarter width (MTW):	2.109m
Half width (MHW):	3.603m
Quarter width (MQW):	4.680m
Foot median:	17.544m
ORC Mainsail area:	56.701m?
Surface area:	58.268m?
Clew height:	0.100m
Mast rake:	0.000m

Battens

Position	Length	Roach	Angle	Luff	Leech	Full
80.000%	1.851m	0.527m	74.308?	13.754m	14.282m	Full
60.000%	3.160m	0.695m	74.308?	10.314m	10.712m	Full
40.000%	4.135m	0.606m	74.308?	6.876m	7.141m	Full
20.000%	4.878m	0.359m	74.308?	3.437m	3.571m	Full

Reefing Points

- 1, Luff: 2.149m ; Leech: 2.206m ; Offset: 0.000m ; Number Eyelets: 4
- 2, Luff: 4.557m ; Leech: 4.669m ; Offset: 0.000m ; Number Eyelets: 4
- 3, Luff: 7.738m ; Leech: 7.929m ; Offset: 0.000m ; Number Eyelets: 3

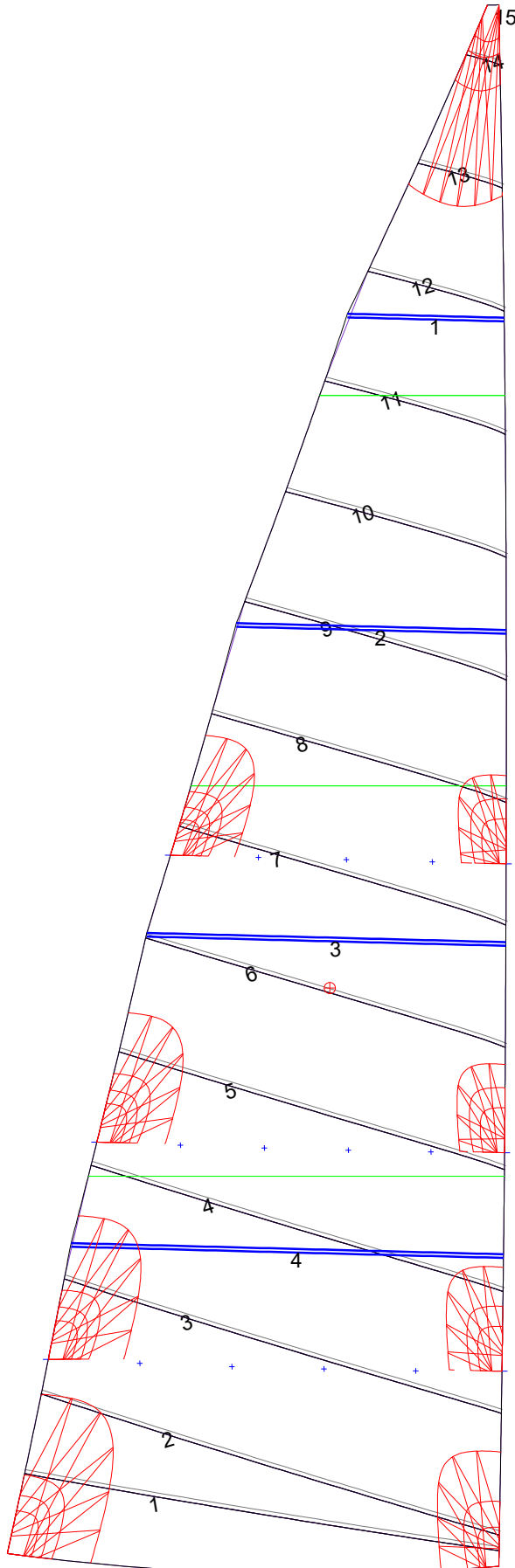
Draft Stripes

- 1, Luff: 4.299m ; Leech: 4.281m ;
- 2, Luff: 8.598m ; Leech: 8.721m ;
- 3, Luff: 12.898m ; Leech: 13.223m ;

Luff Curve

		Fanned Luff (@ 5.00% [0.271m])	Before BSeam
17.199m,	0.000m	100% (17.200m) :	0.000m
15.056m,	-0.040m	90% (15.480m) :	0.062m
12.899m,	-0.068m	80% (13.760m) :	0.122m
10.738m,	-0.080m	70% (12.040m) :	0.163m
8.599m,	-0.082m	60% (10.320m) :	0.185m
6.409m,	-0.076m	50% (8.600m) :	0.188m
4.300m,	-0.060m	40% (6.880m) :	0.179m
2.143m,	-0.034m	30% (5.160m) :	0.154m
0.000m,	0.000m	20% (3.440m) :	0.112m
		10% (1.720m) :	0.056m
		0% (0.000m) :	0.000m

Mainsail: 7000321 Andre fullbat Mainsail.des



Seam Allowances			
Zone: 1	Split	Radial	Cross
	0.045m	0.045m	0.045m

Edge Excesses			
Sail:	Luff	Leech	Foot
	0.000m	0.000m	0.000m

Total Seam Lengths (m)

Horizontal	48.20
Radial/Vertical	0.00
Bi-Radial Split	0.00

Materials

Material	Area (m ²)	Panels
Material 1	58.28	1,2,3,4,5 6,7,8,9,10 11,12,13,14,15