

Mainsail: 7000316 Tom-1 Square top Mainsail.des

Design Info
=====

Design File:
\\Nas\工程部-专用文件\Queenie-跟进客户\Fareast Sails\2023 Order\Need Confrim Order\7000316 Tom\7000316 Tom-

Initial Design Date: 4/4/2023
Boat:

Comments:

Client:

Design Data
=====

Main

Measurements

| | |
|----------------------------|----------|
| Luff geodesic: | 13.450m |
| Leech geodesic: | 14.100m |
| Foot geodesic: | 4.800m |
| Head geodesic: | 1.500m |
| Upper width (MUW): | 1.895m |
| Three-quarter width (MTW): | 2.741m |
| Half width (MHW): | 3.774m |
| Quarter width (MQW): | 4.428m |
| Foot median: | 13.719m |
| ORC Mainsail area: | 46.999m? |
| Surface area: | 48.977m? |
| Clew height: | 0.256m |
| Mast rake: | 0.000m |

Battens

| Position | Length | Roach | Angle | Luff | Leech | Full |
|----------|--------|--------|----------|---------|---------|------|
| 100.000% | 1.763m | 0.000m | 103.225? | 12.553m | 14.030m | Full |
| 95.501% | 1.400m | 0.117m | 95.322? | 12.157m | 13.399m | |
| 90.505% | 2.214m | 0.237m | 84.844? | 11.809m | 12.698m | Full |
| 76.589% | 2.974m | 0.431m | 84.769? | 9.910m | 10.746m | Full |
| 58.628% | 3.625m | 0.461m | 80.790? | 7.674m | 8.226m | Full |
| 39.410% | 4.163m | 0.390m | 78.088? | 5.277m | 5.529m | Full |
| 19.691% | 4.556m | 0.240m | 78.542? | 2.638m | 2.763m | Full |

Reefing Points

1, Luff: 1.420m ; Leech: 1.551m ; Offset: 0.000m ; Number Eyelets: 4
2, Luff: 3.600m ; Leech: 3.721m ; Offset: 0.000m ; Number Eyelets: 4
3, Luff: 4.780m ; Leech: 4.921m ; Offset: 0.000m ; Number Eyelets: 3

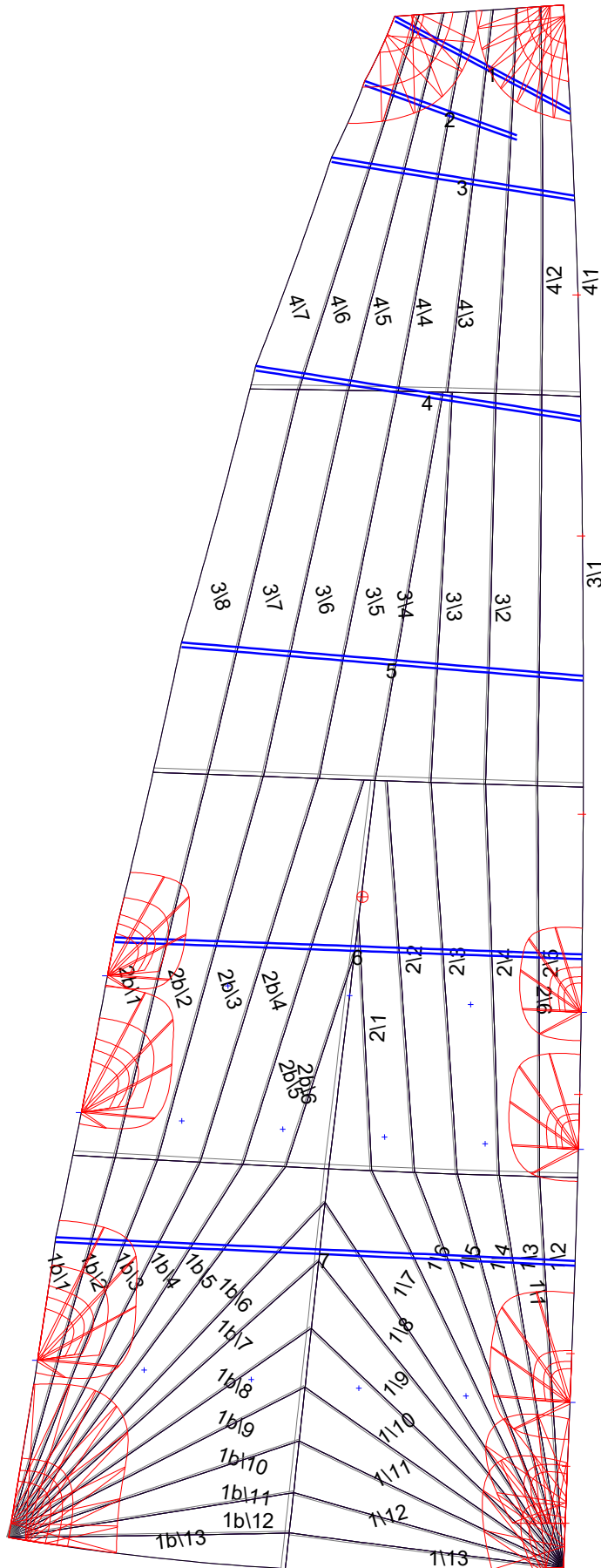
Luff Slides

1, Position: 0.871m
2, Position: 1.841m
3, Position: 4.073m
4, Position: 6.483m
5, Position: 8.878m
6, Position: 10.952m

Luff Curve

| | | Fanned Luff (@ 5.00% [0.239m]) | Before BSeam |
|----------|---------|--------------------------------|--------------|
| 13.447m, | 0.000m | 100% (13.450m) : | 0.000m |
| 12.570m, | -0.057m | 90% (12.108m) : | 0.116m |
| 11.820m, | -0.093m | 80% (10.760m) : | 0.193m |
| 9.920m, | -0.149m | 70% (9.416m) : | 0.236m |
| 7.680m, | -0.170m | 60% (8.071m) : | 0.251m |
| 5.290m, | -0.160m | 50% (6.725m) : | 0.251m |
| 2.640m, | -0.100m | 40% (5.380m) : | 0.232m |
| 0.000m, | 0.000m | 30% (4.035m) : | 0.194m |
| | | 20% (2.689m) : | 0.138m |
| | | 10% (1.345m) : | 0.068m |
| | | 0% (0.000m) : | 0.000m |

Mainsail: 7000316 Tom-1 Square top Mainsail.des



Seam Allowances

| Zone: | Split | Radial | Cross |
|-----------|--------|--------|--------|
| Zone: 1/a | 0.038m | 0.016m | 0.038m |
| Zone: 1/b | 0.038m | 0.016m | 0.038m |
| Zone: 2/a | 0.038m | 0.016m | 0.038m |
| Zone: 2/b | 0.038m | 0.016m | 0.038m |
| Zone: 3 | 0.038m | 0.016m | 0.038m |
| Zone: 4 | 0.038m | 0.016m | 0.038m |

Edge Excesses

| Sail: | Luff | Leech | Foot |
|-------|--------|--------|--------|
| | 0.000m | 0.000m | 0.000m |

Total Seam Lengths (m)

| | |
|-----------------|--------|
| Horizontal | 11.29 |
| Radial/Vertical | 153.90 |
| Bi-Radial Split | 7.15 |

Materials

| Material | Area (m ²) | Panels |
|------------|------------------------|---|
| Material 1 | 49.01 | 1b1,1b2,1b3,1b4,1b5 1b6,1b7,1b8,1b9,1b10 1b11,1b12,1b13,1b1,1b2 1b3,1b4,1b5,1b6,1b7 1b8,1b9,1b10,1b11,1b12 1b13,2b6,2b5,2b4,2b3 2b2,2b1,2b6,2b5,2b4 2b3,2b2,2b1,3b1,3b2 3b3,3b4,3b5,3b6,3b7 3b8,4b1,4b2,4b3,4b4 4b5,4b6,4b7 |