

# Mainsail: 7000314 Kjell -1 Mainsail V3.des

## Design Info

=====

Initial Design Date: 31/3/2023

Boat:

Client:

## Design File:

\\NAS\Engineering files\Queenie-Customer Order\Fareast Sails\2023 Order\Need Confrim Order\7000314 Kjell\7000314

Comments:

## Design Data

=====

### Main

#### Measurements

Luff geodesic:	11.200m
Leech geodesic:	11.845m
Foot geodesic:	4.150m
Head geodesic:	0.120m
Upper width (MUW):	0.874m
Three-quarter width (MTW):	1.596m
Half width (MHW):	2.730m
Quarter width (MQW):	3.521m
Foot median:	11.497m
ORC Mainsail area:	27.970m?
Surface area:	28.952m?
Clew height:	-0.331m
Mast rake:	0.000m

#### Battens

Position	Length	Roach	Angle	Luff	Leech	Full
82.250%	1.302m	0.373m	71.594?	9.207m	9.700m	Full
62.997%	1.250m	0.505m	71.594?	7.051m	7.429m	
42.580%	1.250m	0.438m	71.594?	4.766m	5.021m	
21.544%	1.050m	0.242m	71.594?	2.411m	2.541m	

#### Reefing Points

1, Luff: 1.679m ; Leech: 1.735m ; Offset: 0.000m ; Number Eyelets: 3

#### Draft Stripes

1, Luff: 3.695m ; Leech: 3.729m ;  
2, Luff: 7.390m ; Leech: 7.611m ;

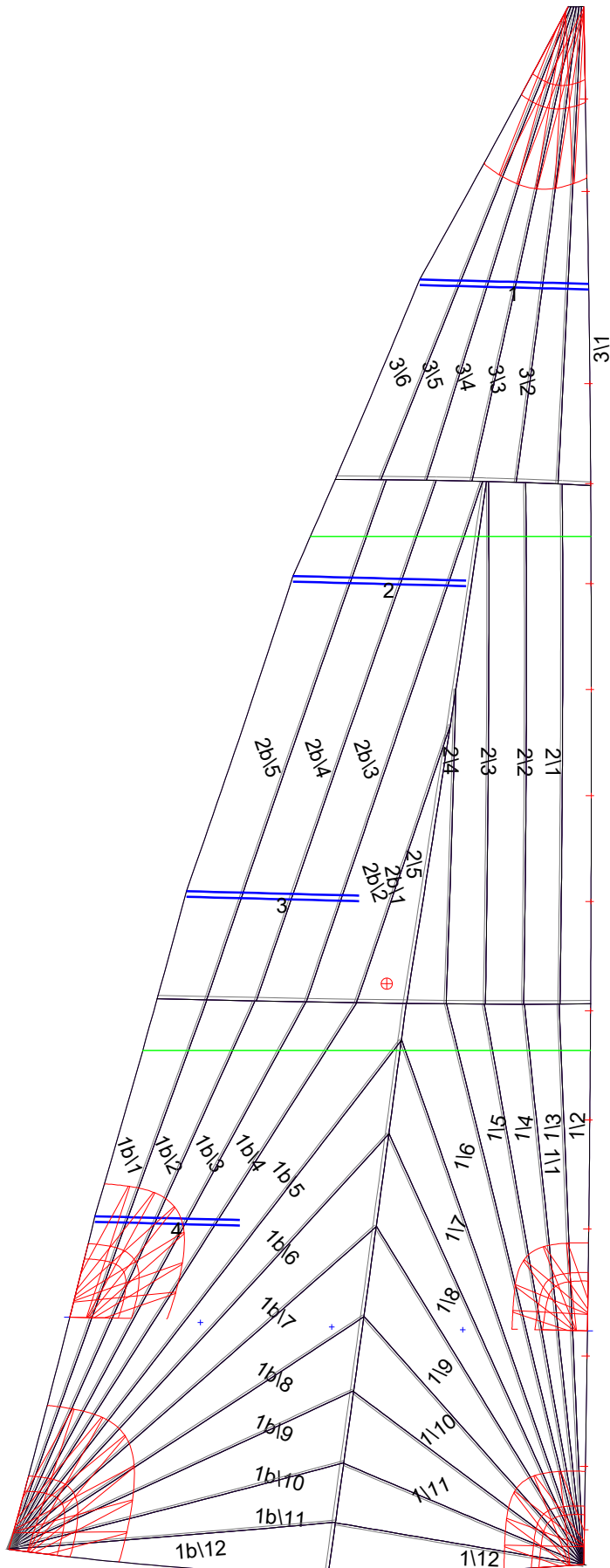
#### Luff Slides

1, Position: 0.706m  
2, Position: 1.498m  
3, Position: 2.411m  
4, Position: 3.196m  
5, Position: 3.981m  
6, Position: 4.766m  
7, Position: 5.527m  
8, Position: 6.289m  
9, Position: 7.051m  
10, Position: 7.770m  
11, Position: 8.488m  
12, Position: 9.871m  
13, Position: 10.536m

#### Luff Curve

		Fanned Luff (@ 5.00% [0.207m])	Before BSeam
11.199m,	0.000m	100% (11.200m) :	0.000m
9.804m,	-0.026m	90% (10.080m) :	0.014m
8.400m,	-0.045m	80% (8.960m) :	0.026m
6.992m,	-0.053m	70% (7.840m) :	0.034m
5.600m,	-0.054m	60% (6.720m) :	0.036m
4.173m,	-0.050m	50% (5.600m) :	0.035m
2.800m,	-0.040m	40% (4.480m) :	0.032m
1.396m,	-0.023m	30% (3.360m) :	0.027m
0.000m,	0.000m	20% (2.240m) :	0.019m
		10% (1.120m) :	0.010m
		0% (0.000m) :	0.000m

# Mainsail: 7000314 Kjell -1 Mainsail V3.des



## Seam Allowances

	Split	Radial	Cross
Zone: 1/a	0.025m	0.015m	0.025m
Zone: 1/b	0.025m	0.015m	0.025m
Zone: 2/a	0.025m	0.015m	0.025m
Zone: 2/b	0.025m	0.015m	0.025m
Zone: 3	0.025m	0.015m	0.025m

## Edge Excesses

	Luff	Leech	Foot
Sail:	0.000m	0.000m	0.000m

## Total Seam Lengths (m)

Horizontal	5.21
Radial/Vertical	121.20
Bi-Radial Split	8.28

## Materials

Material	Area (m <sup>2</sup> )	Panels
Material 1	29.00	1\1,1\2,1\3,1\4,1\5 1\6,1\7,1\8,1\9,1\10 1\11,1\12,1b\1,1b\2,1b\3 1b\4,1b\5,1b\6,1b\7,1b\8 1b\9,1b\10,1b\11,1b\12,2\1 2\2,2\3,2\4,2\5,2b\1 2b\2,2b\3,2b\4,2b\5,3\1 3\2,3\3,3\4,3\5,3\6