

Mainsail: 7000312 Rolf mainsail.des

Design Info
=====

Design File:
\\Nas\工程部-专用文件\Queenie-跟进客户\Fareast Sails\2023 Order\Need Confrim Order\7000312 Rolf\7000312 Rolf m

Initial Design Date: 18/3/2023
Boat:

Comments:

Client:

Design Data
=====

Main

Measurements

Luff geodesic:	9.860m
Leech geodesic:	10.470m
Foot geodesic:	3.069m
Head geodesic:	0.115m
Upper width (MUW):	0.632m
Three-quarter width (MTW):	1.137m
Half width (MHW):	1.956m
Quarter width (MQW):	2.569m
Foot median:	10.167m
ORC Mainsail area:	17.889m ²
Surface area:	18.363m ²
Clew height:	0.100m
Mast rake:	0.200m

Battens

Position	Length	Roach	Angle	Luff	Leech	Full
80.000%	0.988m	0.211m	74.792?	7.840m	8.352m	Full
60.000%	1.693m	0.274m	74.792?	5.825m	6.264m	Full
40.000%	0.950m	0.241m	74.792?	3.809m	4.176m	
20.000%	0.800m	0.139m	74.792?	1.794m	2.088m	

Reefing Points

1, Luff: 1.500m ; Leech: 1.562m ; Offset: 0.000m ; Number Eyelets: 2
2, Luff: 3.300m ; Leech: 3.440m ; Offset: 0.000m ; Number Eyelets: 2

Draft Stripes

1, Luff: 2.467m ; Leech: 2.756m ;
2, Luff: 4.932m ; Leech: 5.293m ;
3, Luff: 7.397m ; Leech: 7.850m ;

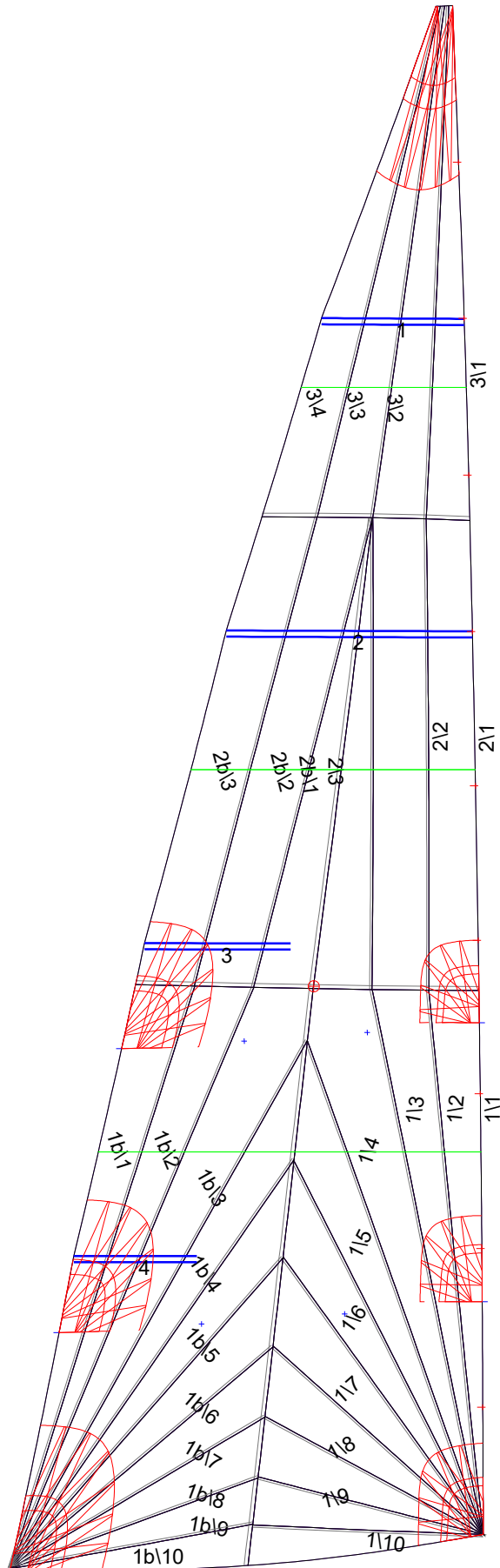
Luff Slides

1, Position: 0.821m
2, Position: 1.845m
3, Position: 2.841m
4, Position: 3.831m
5, Position: 4.828m
6, Position: 5.822m
7, Position: 6.831m
8, Position: 7.842m
9, Position: 8.850m

Luff Curve

		Fanned Luff (@ 5.00% [0.153m])	Before BSeam
9.860m,	0.000m	100% (9.860m) :	0.000m
8.631m,	-0.023m	90% (8.874m) :	0.036m
7.395m,	-0.039m	80% (7.888m) :	0.070m
6.155m,	-0.046m	70% (6.902m) :	0.095m
4.930m,	-0.047m	60% (5.916m) :	0.108m
3.674m,	-0.043m	50% (4.930m) :	0.109m
2.465m,	-0.035m	40% (3.944m) :	0.099m
1.229m,	-0.020m	30% (2.958m) :	0.081m
0.000m,	0.000m	20% (1.972m) :	0.056m
		10% (0.986m) :	0.027m
		0% (0.000m) :	0.000m

Mainsail: 7000312 Rolf mainsail.des



Seam Allowances

Zone:	Split	Radial	Cross
Zone: 1/a	0.025m	0.015m	0.025m
Zone: 1/b	0.025m	0.015m	0.025m
Zone: 2/a	0.025m	0.015m	0.025m
Zone: 2/b	0.025m	0.015m	0.025m
Zone: 3	0.025m	0.015m	0.025m

Edge Excesses

Sail:	Luff	Leech	Foot
	0.000m	0.000m	0.000m

Total Seam Lengths (m)

Horizontal	3.74
Radial/Vertical	69.88
Bi-Radial Split	7.02

Materials

Material	Area (m ²)	Panels
Material 1	18.39	1\1,1\2,1\3,1\4,1\5 1\6,1\7,1\8,1\9,1\10 1b\1,1b\2,1b\3,1b\4,1b\5 1b\6,1b\7,1b\8,1b\9,1b\10 2\1,2\2,2\3,2b\1,2b\2 2b\3,3\1,3\2,3\3,3\4