

Genoa: 7000311 Christian Headsail.des

Design Info
=====

Design File:
\\Nas\工程部-专用文件\Queenie-跟进客户\Fareast Sails\2023 Order\Need Confrim Order\7000311 Christian\7000311 C

Initial Design Date: 14/3/2023
Boat:

Comments:

Client:

Design Data
=====

Genoa

Measurements

Luff geodesic: 16.408m
 Leech geodesic: 15.494m
 Foot geodesic: 5.664m
 Headboard width: 0.035m
 Luff perpendicular (HLP): 5.370m
 Upper width (HUW): 0.692m
 Three-quarter width (HTW): 1.358m
 Half width (HHW): 2.715m
 Quarter width (HQW): 4.061m
 Foot median: 15.852m
 ORC Headsail area: 44.408m?
 IRC Headsail area: 44.329m?
 Surface area: 44.769m?
 Forestay height: 17.350m
 J: 4.200m

Battens

Position	Length	Roach	Angle	Luff	Leech	Full
81.500%	2.000m	0.000m	160.074?	23.538m	12.591m	
61.500%	2.100m	0.000m	160.074?	65.226m	9.501m	
42.000%	2.100m	0.000m	160.074?	105.872m	6.489m	
21.000%	1.800m	0.000m	160.074?	149.644m	3.244m	

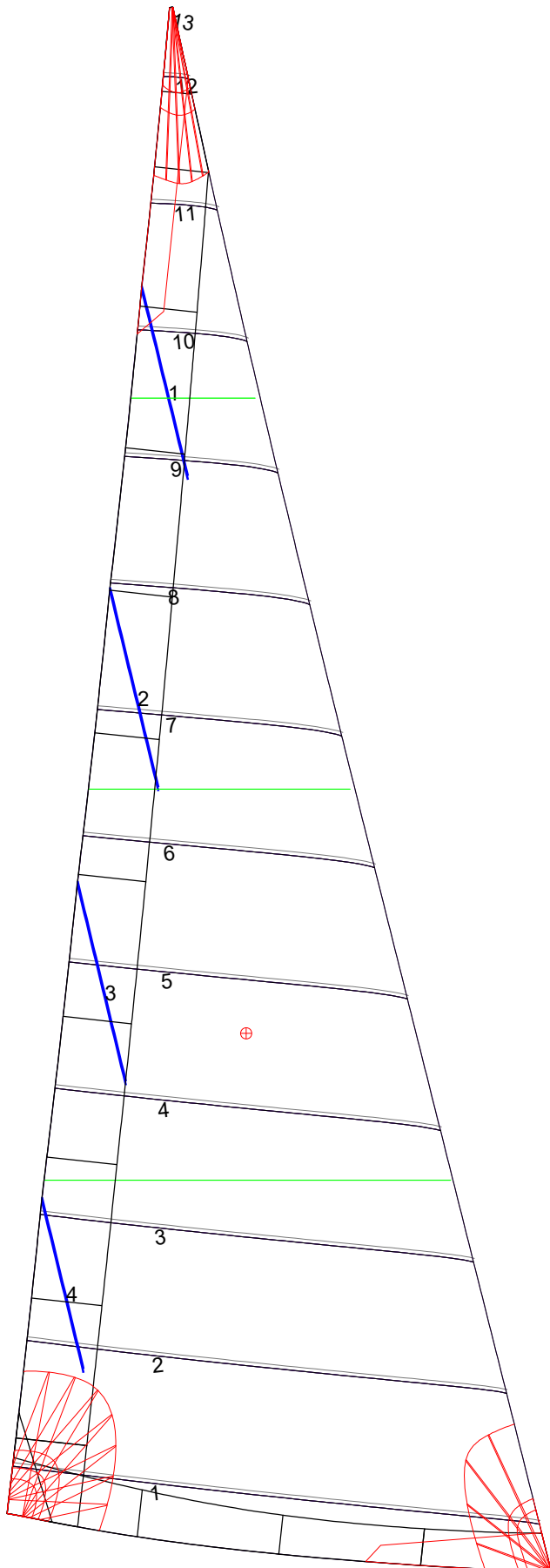
Draft Stripes

1, Luff: 4.116m ; Leech: 3.435m ;
 2, Luff: 8.232m ; Leech: 7.448m ;
 3, Luff: 12.334m ; Leech: 11.448m ;

Luff Curve

		Fanned Luff (@ 5.00% [0.278m])	Before BSeam
16.405m,	0.000m	100% (16.405m) :	0.000m -0.000m
15.042m,	0.056m	90% (14.765m) :	-0.061m -0.011m
13.534m,	0.101m	80% (13.126m) :	-0.106m -0.013m
12.207m,	0.124m	70% (11.485m) :	-0.127m -0.007m
10.664m,	0.133m	60% (9.844m) :	-0.129m 0.006m
8.164m,	0.116m	50% (8.203m) :	-0.117m 0.020m
5.332m,	0.079m	40% (6.563m) :	-0.097m 0.028m
2.773m,	0.039m	30% (4.922m) :	-0.073m 0.030m
0.000m,	0.000m	20% (3.282m) :	-0.048m 0.027m
		10% (1.640m) :	-0.024m 0.019m
		0% (0.000m) :	-0.000m 0.000m

Genoa: 7000311 Christian Headsail.des



Seam Allowances

Zone:	Split	Radial	Cross
Zone: 1	0.000m	0.000m	0.038m
Cover 1	0.025m	0.025m	0.025m
Cover 2	0.025m	0.025m	0.025m
Cover 3	0.000m	0.000m	0.000m
Cover 4	0.000m	0.000m	0.000m

Edge Excesses

Sail:	Luff	Leech	Foot
Sail:	0.000m	0.000m	0.000m
Cover 0	0.070m	0.100m	0.070m
Cover 1	0.070m	0.070m	0.070m
Cover 2	0.000m	0.070m	0.070m
Cover 3	0.000m	0.070m	0.070m

Total Seam Lengths (m)

Horizontal	34.85
Radial/Vertical	0.00
Bi-Radial Split	0.00

Materials

Material	Area (m ²)	Panels
Material 1	44.86	1,2,3,4,5 6,7,8,9,10 11,12,13