

Genoa: 7000308 Louis-2 hanks jib.des

Design Info

=====

Design File:

\\Nas\工程部-专用文件\Queenie-跟进客户\Fareast Sails\2023 Order\Need Confrim Order\7000308 Louis\7000308 Loui

Initial Design Date: 18/3/2023

Boat:

Comments:

Client:

Design Data

=====

Genoa

Measurements

Luff geodesic:	8.711m
Leech geodesic:	7.873m
Foot geodesic:	3.249m
Headboard width:	0.045m
Luff perpendicular (HLP):	2.936m
Upper width (HUW):	0.336m
Three-quarter width (HTW):	0.645m
Half width (HHW):	1.331m
Quarter width (HQW):	2.102m
Foot median:	8.217m
ORC Headsail area:	12.185m?
IRC Headsail area:	12.158m?
Surface area:	12.236m?
Forestay height:	9.753m
J:	2.819m

Draft Stripes

1, Luff: 2.885m ; Leech: 2.233m ;
2, Luff: 5.766m ; Leech: 5.003m ;

Luff Slides

1, Position: 0.508m
2, Position: 1.278m
3, Position: 2.047m
4, Position: 2.817m
5, Position: 3.586m
6, Position: 4.356m
7, Position: 5.125m
8, Position: 5.895m
9, Position: 6.664m
10, Position: 7.434m
11, Position: 8.203m

Luff Curve

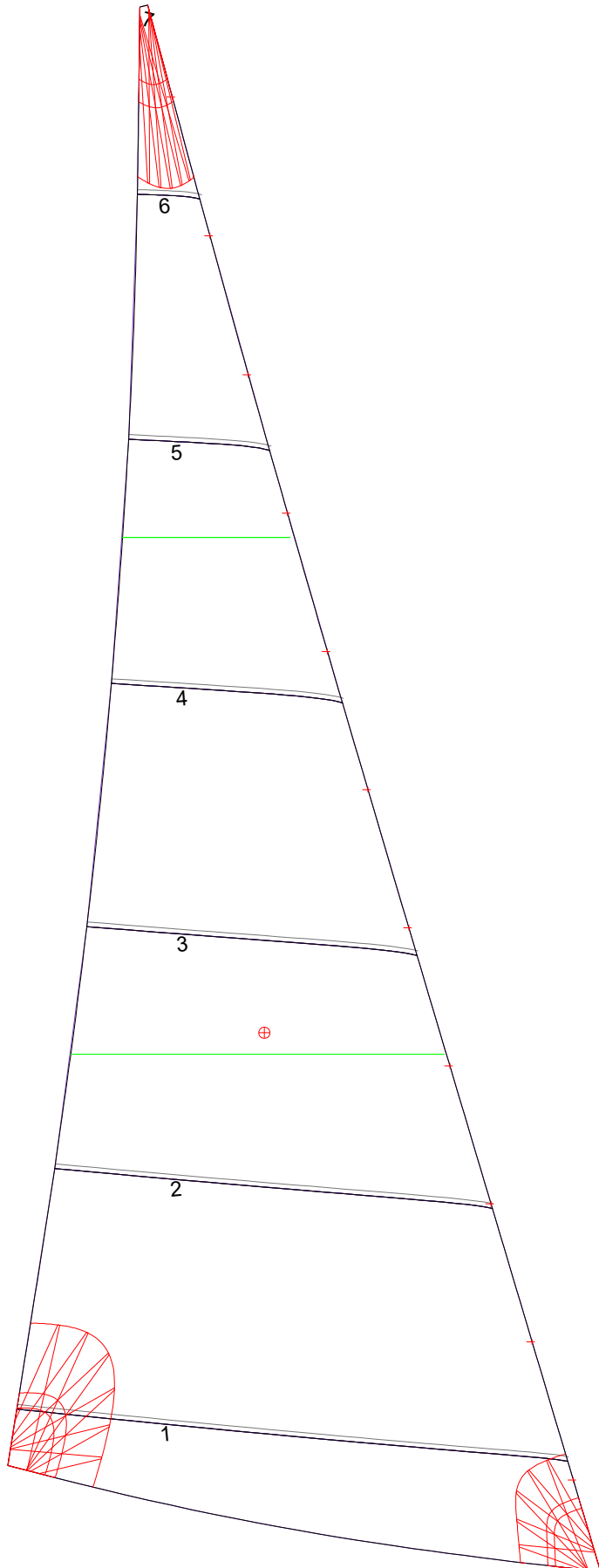
8.710m,	0.000m
7.986m,	0.025m
7.186m,	0.045m
6.481m,	0.055m
5.662m,	0.059m
4.334m,	0.052m
2.831m,	0.035m
1.472m,	0.018m
0.000m,	0.000m

Fanned Luff (@ 5.00% [0.158m])

100% (8.710m) :	0.000m	-0.000m
90% (7.839m) :	-0.027m	-0.009m
80% (6.969m) :	-0.047m	-0.013m
70% (6.097m) :	-0.057m	-0.013m
60% (5.226m) :	-0.059m	-0.010m
50% (4.355m) :	-0.054m	-0.004m
40% (3.484m) :	-0.045m	0.002m
30% (2.613m) :	-0.034m	0.005m
20% (1.742m) :	-0.022m	0.006m
10% (0.871m) :	-0.011m	0.006m
0% (0.000m) :	0.000m	0.000m

Before BSeam

Genoa: 7000308 Louis-2 hanks jib.des



Seam Allowances			
Zone: 1	Split	Radial	Cross
	0.000m	0.000m	0.025m

Edge Excesses			
Sail:	Luff	Leech	Foot
	0.000m	0.000m	0.000m

Total Seam Lengths (m)

Horizontal	9.73
Radial/Vertical	0.00
Bi-Radial Split	0.00

Materials

Material	Area (m ²)	Panels
Material 1	12.28	1,2,3,4,5 6,7