

Genoa: 7000225 J-L Ribaux HeadsailV1.des

Design Info

=====

Design File:

\\Nas\工程部-专用文件\Queenie-跟进客户\Fareast Sails\2023 Order\Need Confrim Order\7000225 J-L Ribaux\7000225

Initial Design Date: 4/3/2023

Boat:

Client:

Comments:

Design Data

=====

Genoa

Measurements

Luff geodesic:	12.094m
Leech geodesic:	12.070m
Foot geodesic:	6.330m
Headboard width:	0.035m
Luff perpendicular (HLP):	6.134m
Upper width (HUW):	0.694m
Three-quarter width (HTW):	1.383m
Half width (HHW):	2.873m
Quarter width (HQW):	4.472m
Foot median:	11.886m
ORC Headsail area:	35.838m?
IRC Headsail area:	35.759m?
Surface area:	36.144m?
Forestay height:	13.034m
J:	4.120m

Draft Stripes

1, Luff: 4.009m ; Leech: 4.164m ;
2, Luff: 8.012m ; Leech: 8.043m ;

Luff Curve

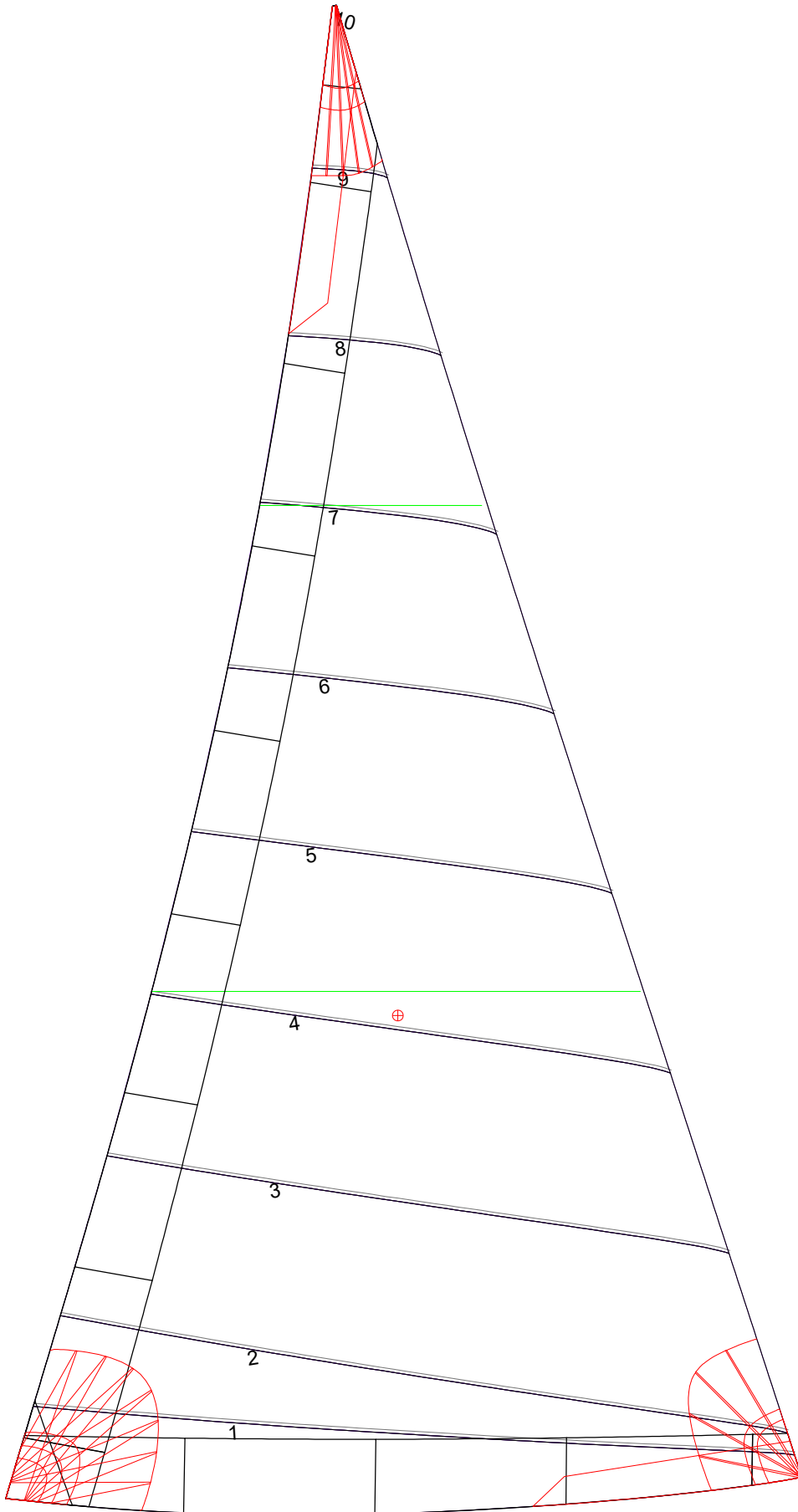
12.092m,	0.000m
11.087m,	0.041m
9.976m,	0.074m
8.997m,	0.091m
7.860m,	0.098m
6.017m,	0.086m
3.930m,	0.058m
2.044m,	0.029m
0.000m,	0.000m

Fanned Luff (@ 5.00% [0.312m])

100% (12.092m) :	0.000m	0.000m
90% (10.881m) :	-0.042m	0.003m
80% (9.675m) :	-0.074m	0.009m
70% (8.465m) :	-0.090m	0.019m
60% (7.256m) :	-0.092m	0.032m
50% (6.046m) :	-0.084m	0.044m
40% (4.837m) :	-0.070m	0.049m
30% (3.628m) :	-0.053m	0.046m
20% (2.419m) :	-0.035m	0.037m
10% (1.208m) :	-0.017m	0.024m
0% (0.000m) :	-0.000m	0.000m

Before BSeam

Genoa: 7000225 J-L Ribaux HeadsailV1.des



Seam Allowances

Zone:	Split	Radial	Cross
Zone: 1	0.000m	0.000m	0.025m
Cover 1	0.025m	0.025m	0.025m
Cover 2	0.025m	0.025m	0.025m
Cover 3	0.000m	0.000m	0.000m
Cover 4	0.000m	0.000m	0.000m

Edge Excesses

Sail:	Luff	Leech	Foot
Sail:	0.000m	0.000m	0.000m
Cover 0	0.070m	0.070m	0.070m
Cover 1	0.070m	0.070m	0.070m
Cover 2	0.000m	0.070m	0.070m
Cover 3	0.000m	0.070m	0.070m

Total Seam Lengths (m)

Horizontal	31.50
Radial/Vertical	0.00
Bi-Radial Split	0.00

Materials

Material	Area (m ²)	Panels
Material 1	36.24	1,2,3,4,5 6,7,8,9,10