

# Genoa: 7000217 Lee-2 jib .des

## Design Info

=====

## Design File:

\\Nas\工程部-专用文件\Queenie-跟进客户\Fareast Sails\2023 Order\Need Confrim Order\7000217 Lee\7000217 Lee-2

Initial Design Date: 22/2/2023  
Boat:

Client:

## Comments:

luff=9.1m, leech=7.72m, foot=5.8m  
LP=4.91m, not 4.44m

## Design Data

=====

## Genoa

### Measurements

Luff geodesic:	10.010m
Leech geodesic:	5.198m
Foot geodesic:	6.196m
Headboard width:	0.050m
Luff perpendicular (HLP):	2.770m
Upper width (HUW):	0.337m
Three-quarter width (HTW):	0.642m
Half width (HHW):	1.296m
Quarter width (HQW):	2.010m
Foot median:	7.399m
ORC Headsail area:	13.446m?
IRC Headsail area:	13.424m?
Surface area:	13.782m?
Forestay height:	12.000m
J:	3.000m

### Luff Slides

- 1, Position: 0.385m
- 2, Position: 1.104m
- 3, Position: 1.823m
- 4, Position: 2.543m
- 5, Position: 3.262m
- 6, Position: 3.981m
- 7, Position: 4.700m
- 8, Position: 5.420m
- 9, Position: 6.139m
- 10, Position: 6.858m
- 11, Position: 7.577m
- 12, Position: 8.297m
- 13, Position: 9.016m
- 14, Position: 9.735m

### Luff Curve

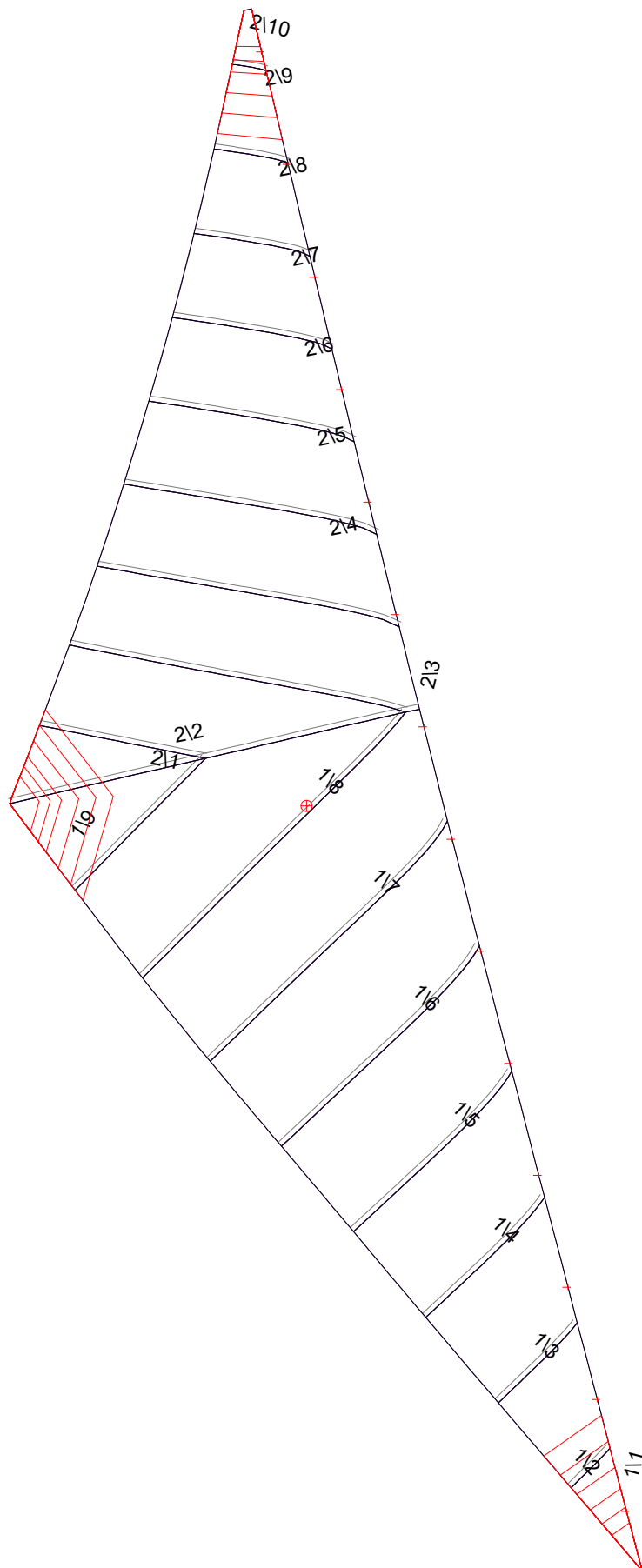
10.008m,	0.000m
7.506m,	0.042m
5.004m,	0.057m
2.502m,	0.030m
0.000m,	0.000m

### Fanned Luff (@ 5.00% [0.197m])

100% (10.008m) :	-0.000m	-0.000m
90% (9.009m) :	-0.028m	0.003m
80% (8.006m) :	-0.054m	0.008m
70% (7.006m) :	-0.076m	0.015m
60% (6.005m) :	-0.089m	0.024m
50% (5.004m) :	-0.090m	0.036m
40% (4.003m) :	-0.078m	0.047m
30% (3.003m) :	-0.059m	0.047m
20% (2.002m) :	-0.039m	0.034m
10% (1.001m) :	-0.020m	0.011m
0% (0.000m) :	0.000m	0.000m

### Before BSeam

# Genoa: 7000217 Lee



## Seam Allowances

	Split	Radial	Cross
Zone: 1	0.032m	0.032m	0.032m
Zone: 2	0.032m	0.032m	0.032m

## Edge Excesses

Sail:	Luff	Leech	Foot
	0.000m	0.000m	0.000m

## Total Seam Lengths (m)

Horizontal	13.76
Radial/Vertical	11.42
Bi-Radial Split	0.00

## Materials

Material	Area (m <sup>2</sup> )	Panels
Material 1	13.78	11, 12, 13, 14, 15 16, 17, 18, 19, 21 22, 23, 24, 25, 26 27, 28, 29, 210