

Mainsail: 7000210 Joe-1 Formosa 46 main.des

Design Info
=====

Design File:
F:\Dropbox\Dropbox-20221019\Dropbox20221213\Dropbox\Fareast Sails\2023 Order\Need Confrim Order\7000210 Jo

Initial Design Date: 21/2/2023
Boat:

Comments:

Client:

Design Data
=====

Main

Measurements

Luff geodesic: 14.031m
Leech geodesic: 14.773m
Foot geodesic: 4.979m
Head geodesic: 0.115m
Upper width (MUW): 0.936m
Three-quarter width (MTW): 1.747m
Half width (MHW): 3.118m
Quarter width (MQW): 4.146m
Foot median: 14.290m
ORC Mainsail area: 40.554m?
Surface area: 41.381m?
Clew height: 0.100m
Mast rake: 0.000m

Battens

Position	Length	Roach	Angle	Luff	Leech	Full
80.000%	1.150m	0.307m	72.272?	11.220m	11.776m	
60.000%	1.700m	0.431m	72.272?	8.414m	8.832m	
40.000%	1.700m	0.380m	72.272?	5.609m	5.888m	
20.000%	1.700m	0.216m	72.272?	2.804m	2.944m	

Reefing Points

1, Luff: 2.104m ; Leech: 2.178m ; Offset: 0.000m ; Number Eyelets: 4
2, Luff: 4.208m ; Leech: 4.357m ; Offset: 0.000m ; Number Eyelets: 3

Draft Stripes

1, Luff: 3.507m ; Leech: 3.518m ;
2, Luff: 7.014m ; Leech: 7.193m ;
3, Luff: 10.522m ; Leech: 10.919m ;

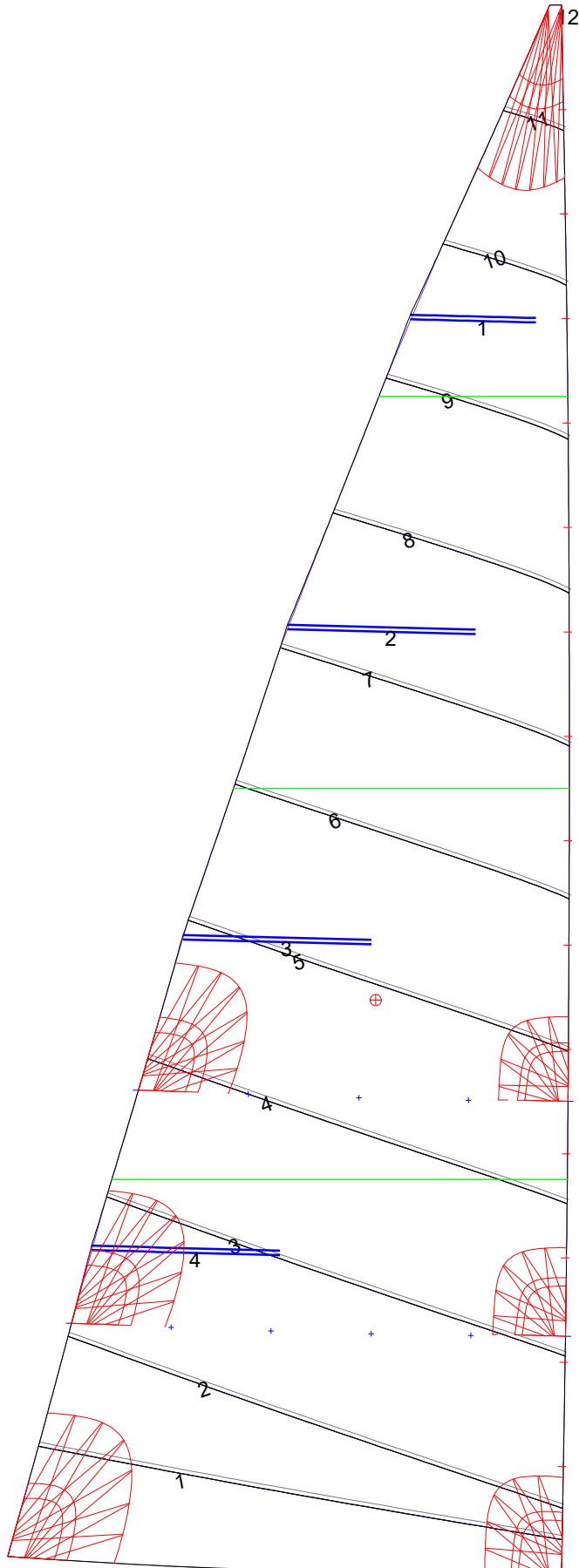
Luff Slides

1, Position: 0.935m
2, Position: 1.869m
3, Position: 2.804m
4, Position: 3.739m
5, Position: 4.674m
6, Position: 5.609m
7, Position: 6.544m
8, Position: 7.479m
9, Position: 8.414m
10, Position: 9.349m
11, Position: 10.285m
12, Position: 11.220m
13, Position: 12.157m
14, Position: 13.094m

Luff Curve

		Fanned Luff (@ 5.00% [0.248m])	Before BSeam
14.031m,	0.000m	100% (14.031m) :	0.000m
12.282m,	-0.032m	90% (12.629m) :	0.054m
10.523m,	-0.055m	80% (11.225m) :	0.106m
8.760m,	-0.067m	70% (9.822m) :	0.146m
7.015m,	-0.070m	60% (8.419m) :	0.169m
5.228m,	-0.064m	50% (7.016m) :	0.171m
3.508m,	-0.051m	40% (5.613m) :	0.156m
1.748m,	-0.029m	30% (4.209m) :	0.127m
0.000m,	0.000m	20% (2.806m) :	0.088m
		10% (1.403m) :	0.043m
		0% (0.000m) :	0.000m

Mainsail: 7000210 Joe-1 Formosa 46 main.des



Seam Allowances			
Zone: 1	Split	Radial	Cross
	0.000m	0.000m	0.038m

Edge Excesses			
Sail:	Luff	Leech	Foot
	0.000m	0.000m	0.000m

Total Seam Lengths (m)

Horizontal	34.05
Radial/Vertical	0.00
Bi-Radial Split	0.00

Materials

Material	Area (m ²)	Panels
Material 1	41.42	1,2,3,4,5 6,7,8,9,10 11,12