

Genoa: 7000129 Torstein-2 Nauticat 33 headsailV1.des

Design Info
=====

Design File:
\\NAS\Engineering files\Queenie-Customer Order\Fareast Sails\2024 Orders\Need to be Confirmed\7000129 Torstein

Initial Design Date: 17/4/2024
Boat:
Nauticat 33
Client:

Comments:
LP=125%%

Design Data
=====

Genoa

Measurements

Luff geodesic: 10.098m
Leech geodesic: 9.974m
Foot geodesic: 5.428m
Headboard width: 0.035m
Luff perpendicular (HLP): 5.225m
Upper width (HUW): 0.583m
Three-quarter width (HTW): 1.164m
Half width (HHW): 2.463m
Quarter width (HQW): 3.830m
Foot median: 9.828m
ORC Headsail area: 25.540m?
IRC Headsail area: 25.456m?
Surface area: 25.719m?
Forestay height: 12.410m
J: 4.180m

Draft Stripes

1, Luff: 3.349m ; Leech: 3.410m ;
2, Luff: 6.691m ; Leech: 6.628m ;

Luff Curve

10.096m, 0.000m
9.257m, 0.034m
8.329m, 0.062m
7.512m, 0.076m
6.563m, 0.082m
5.024m, 0.072m
3.281m, 0.049m
1.707m, 0.024m
0.000m, 0.000m

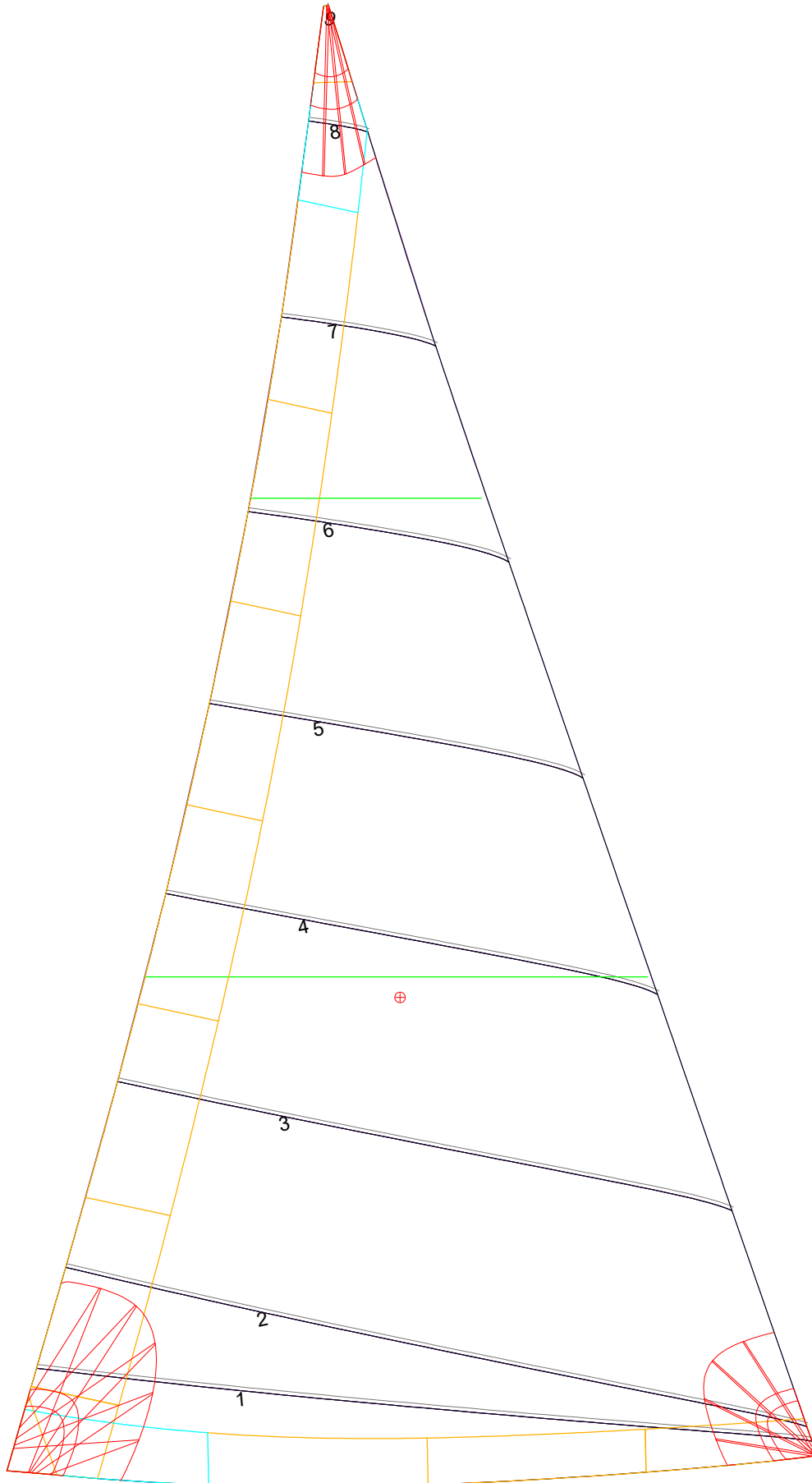
Fanned Luff (@ 5.00% [0.267m])

100% (10.096m) : -0.000m
90% (9.085m) : -0.038m
80% (8.079m) : -0.070m
70% (7.068m) : -0.082m
60% (6.058m) : -0.080m
50% (5.048m) : -0.072m
40% (4.039m) : -0.060m
30% (3.029m) : -0.046m
20% (2.020m) : -0.031m
10% (1.009m) : -0.016m
0% (0.000m) : 0.000m

Before BSeam

-0.000m
-0.011m
-0.015m
-0.000m
0.023m
0.038m
0.046m
0.048m
0.040m
0.021m
0.000m

Genoa: 7000129 Torstein-2 Nauticat 33 headsailV1.des



Seam Allowances

Zone:	Split	Radial	Cross
Zone: 1	0.025m	0.025m	0.025m
Cover 1	0.025m	0.025m	0.025m
Cover 2	0.025m	0.025m	0.025m
Cover 3	0.000m	0.000m	0.000m
Cover 4	0.000m	0.000m	0.000m

Edge Excesses

	Luff	Leech	Foot
Sail:	0.000m	0.000m	0.000m
Cover 0	0.070m	0.100m	0.070m
Cover 1	0.070m	0.070m	0.100m
Cover 2	0.000m	0.070m	0.070m
Cover 3	0.000m	0.070m	0.070m

Total Seam Lengths (m)

Horizontal	24.05
Radial/Vertical	0.00
Bi-Radial Split	0.00

Materials

Material	Area (m ²)	Panels
Material 1	25.79	1,2,3,4,5 6,7,8,9