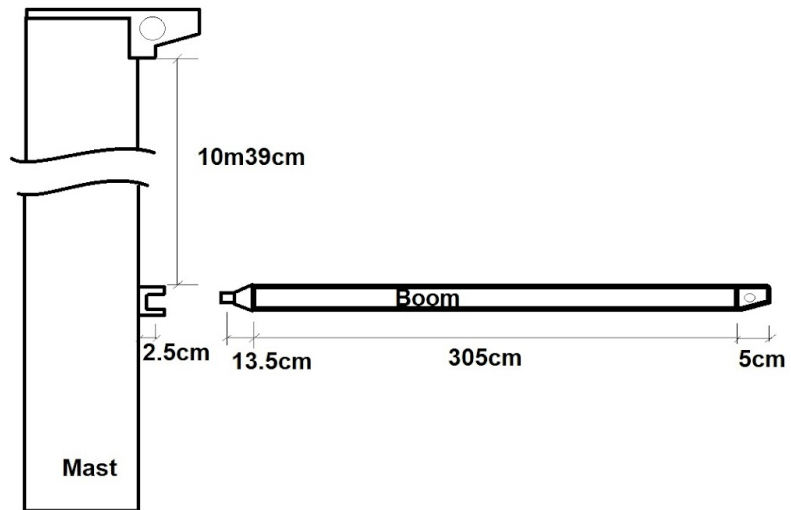


Noughty,

Measurements.



Here is a drawing of the mast and boom with measurements



Boom is made by Francespar



This end attaches to the mast



And this one attaches to topping lift but i'm planning to switch to boomkicker



Here is how it attaches to the mast





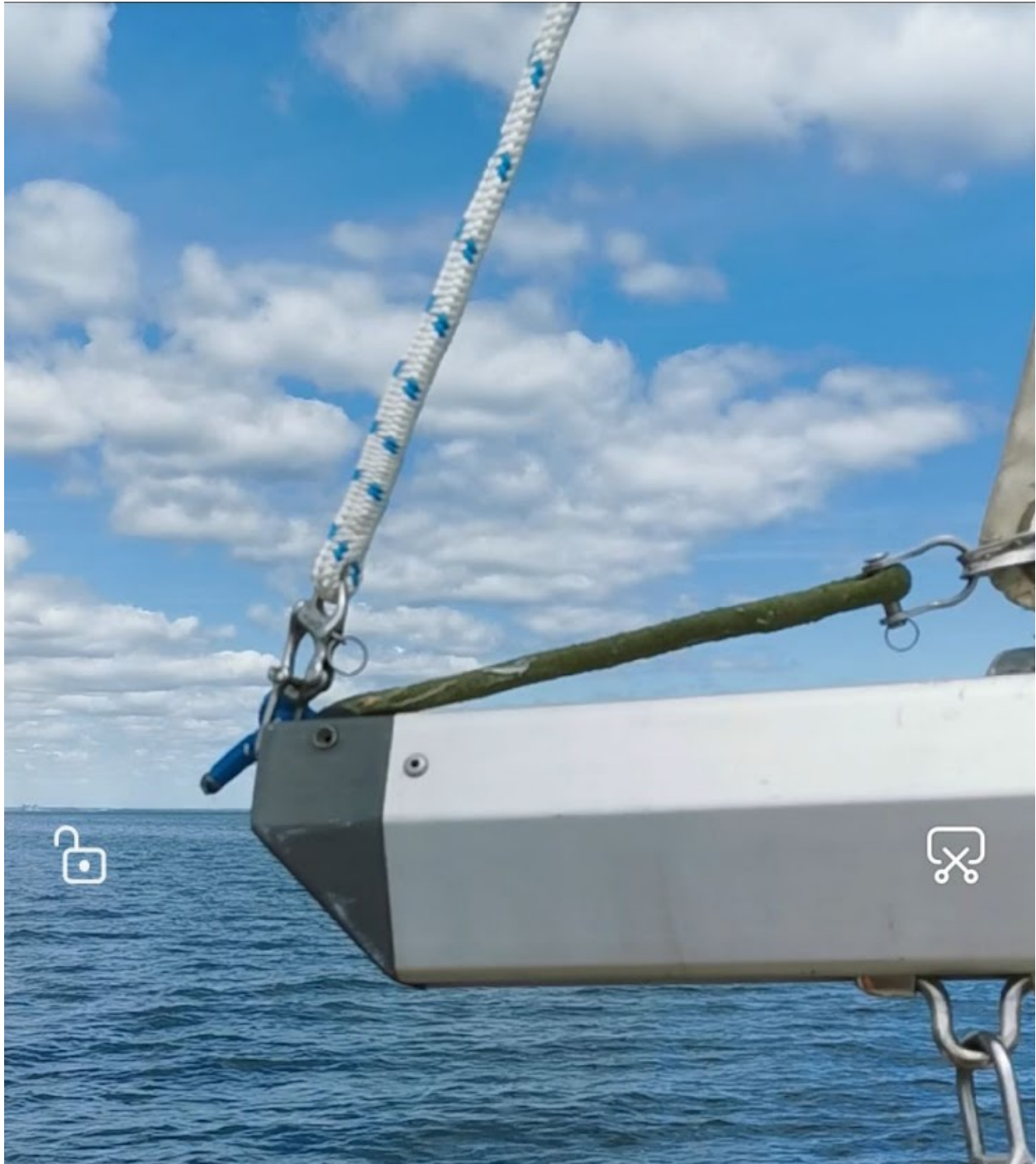




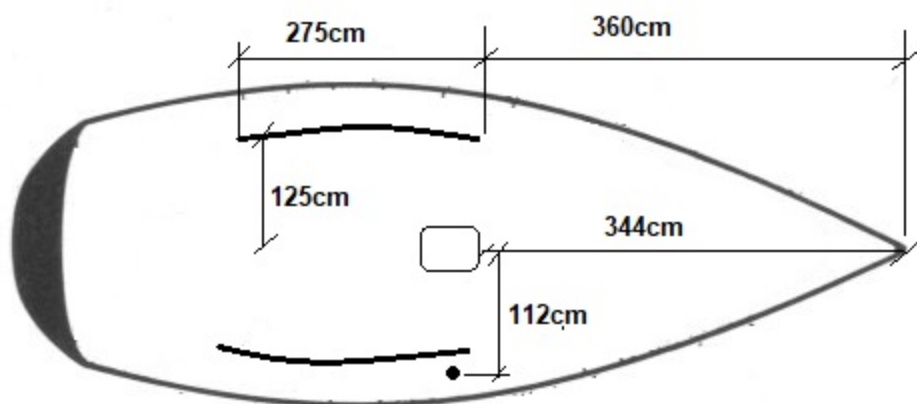




And the current main does not utilize the boom space fully



Here are the dimensions I took for the tracks and mast



Furler is a ProFurl proengin



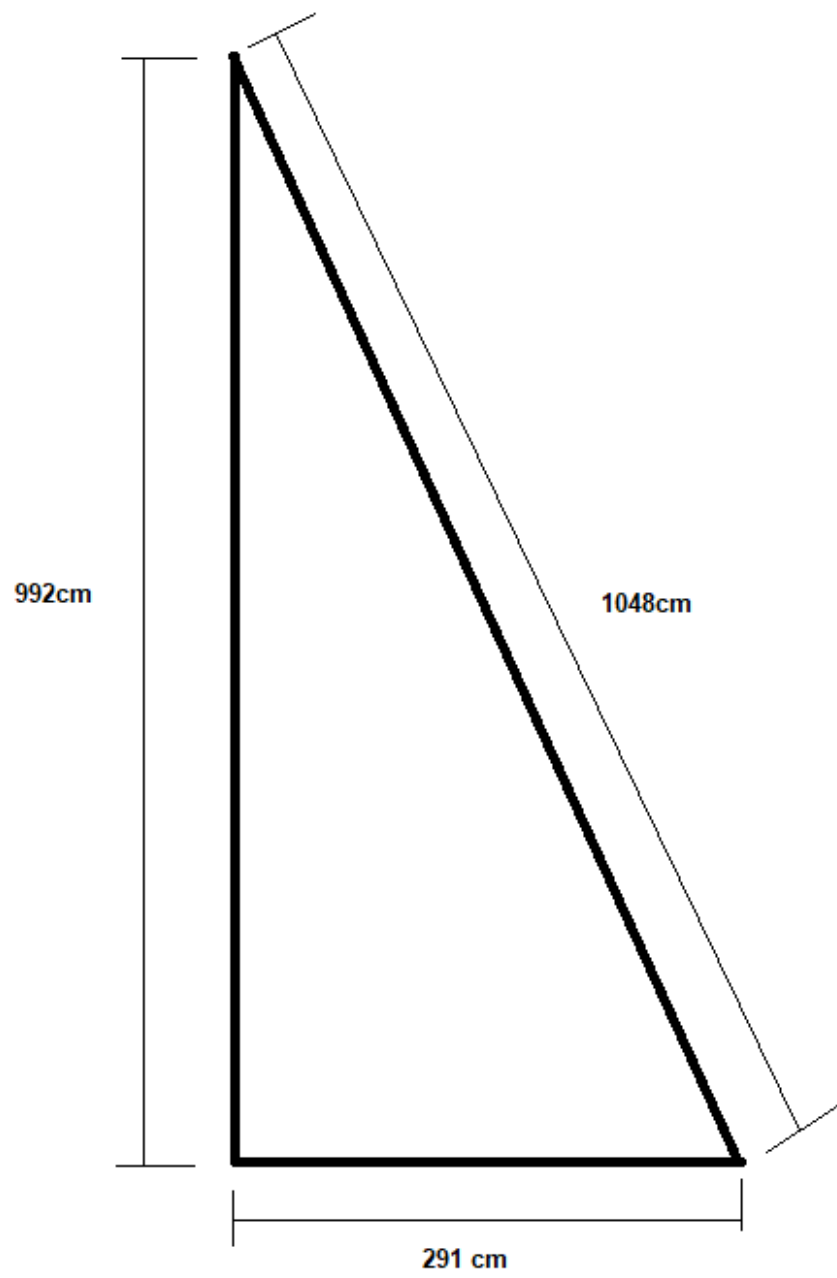
It seats 39 cm off the deck to the sail and luff tape starts 31 cm from the drum





Old Sail Dimensions

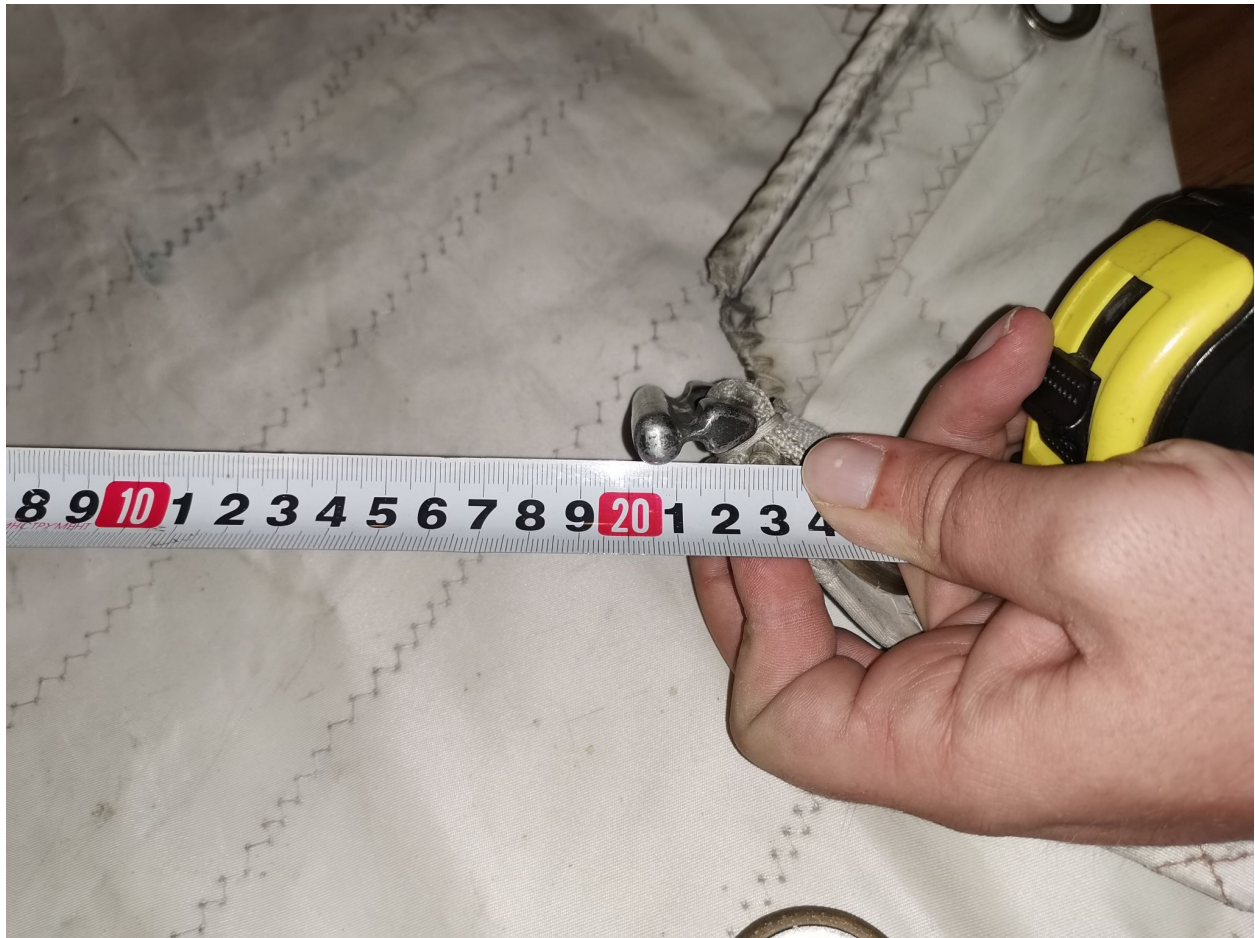




Foot car looks like it is 1cm by 7cm







And the carts that go into the mast are 1.5cm by 3 cm





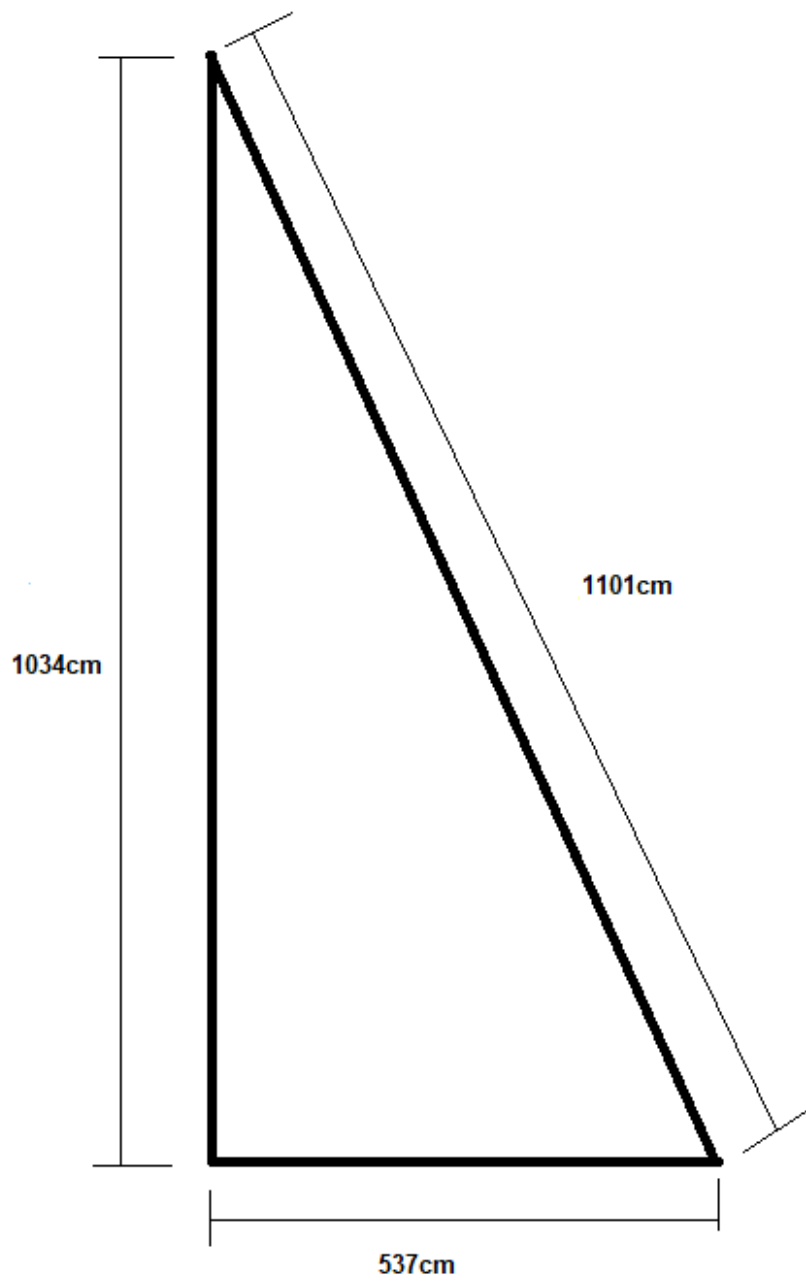




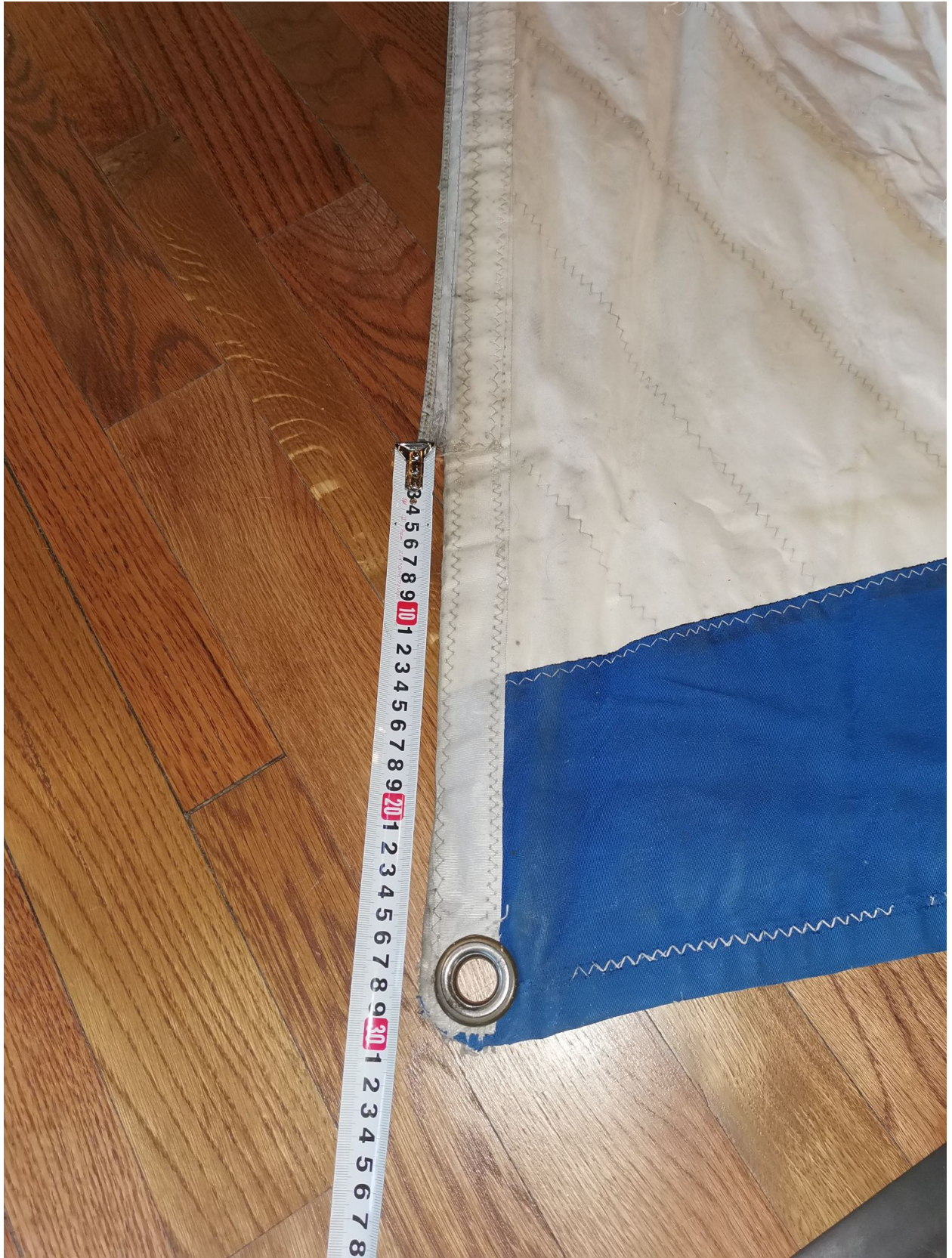
Genoa



Sunbrella is on the port side

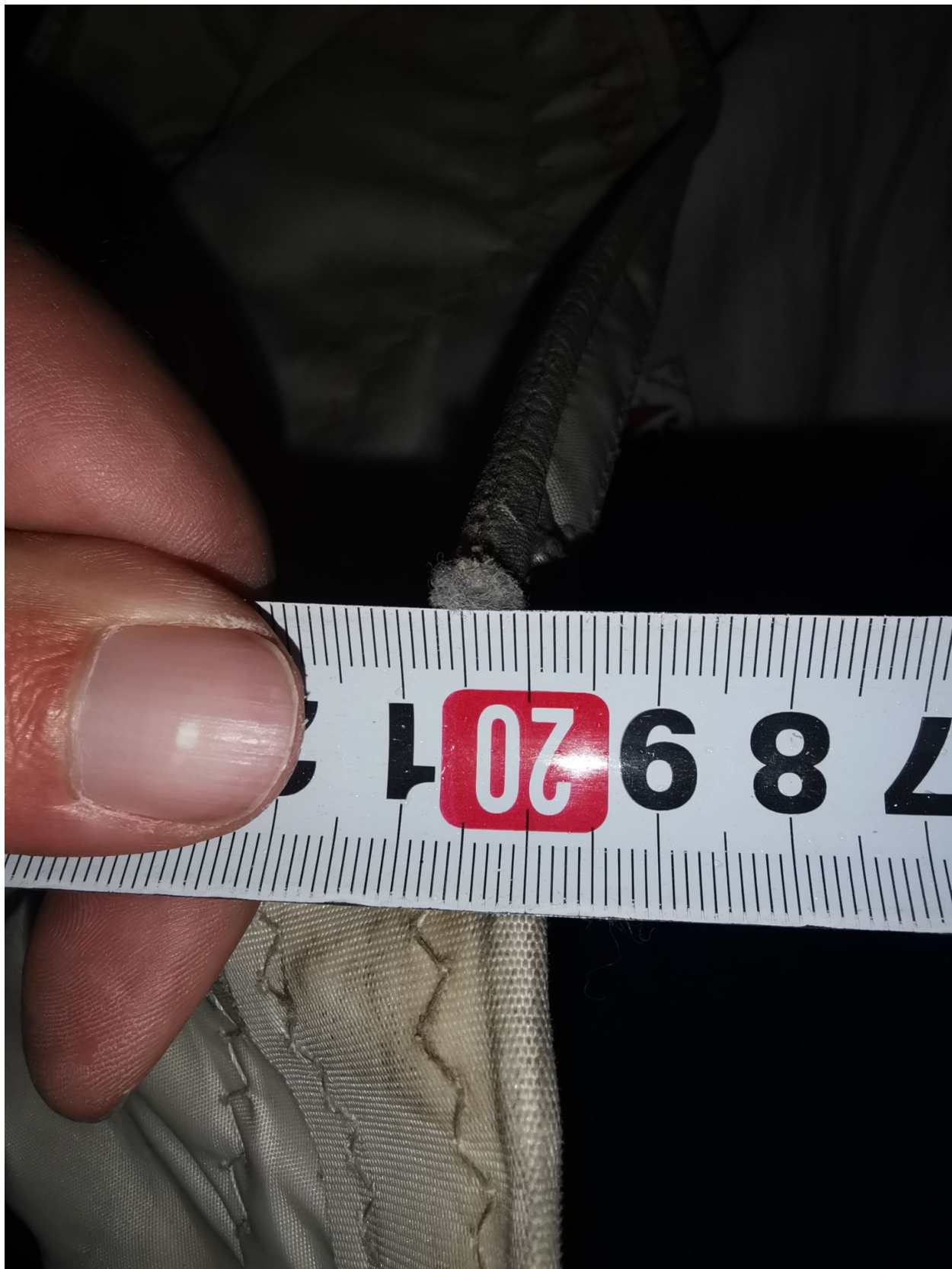


Here is the current luff tape start 31 cm



And the tape

Looks like 6 mm and I did the drill bit test and it accepted 7/32



Here are some more pictures to be able to see how current sails sit





