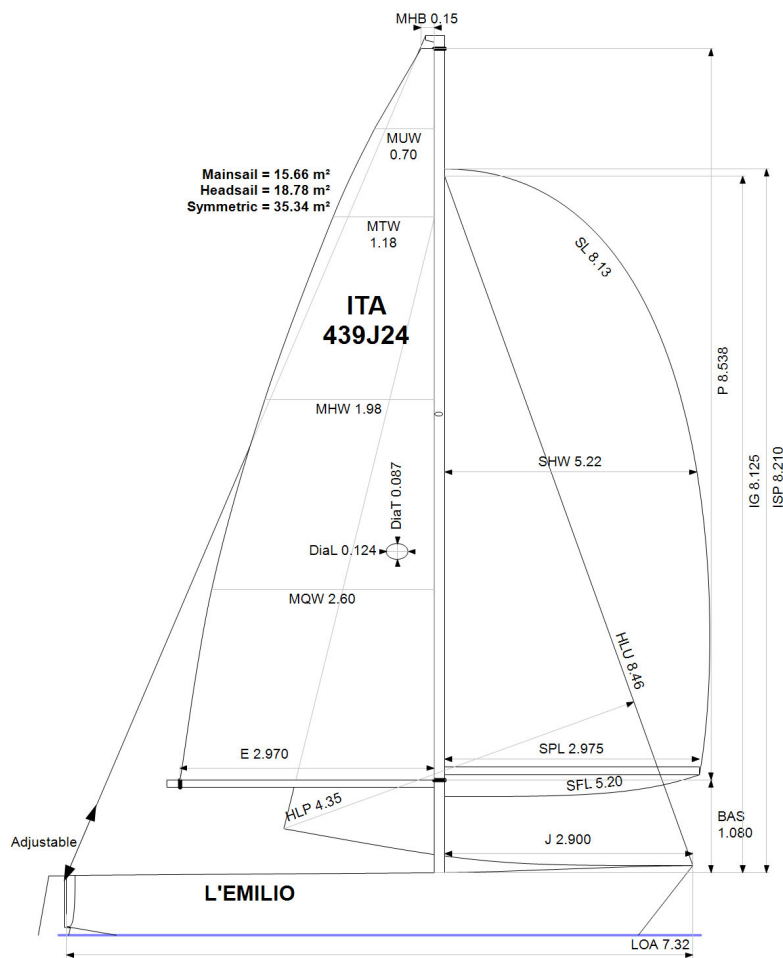


APH: **649.7** CDL: **6.472**

GPH: **726.9** CertNo: **23/1**



BOAT

Class **J-24**
Designer **JOHNSTONE**
Builder **J-Boats**
Age date
Series date **01/1977**
Offset file **J24.OD**
Data file **I439J24**

HULL

Length Overall **7.318 m**
Maximum Beam **2.692 m**
Draft **1.225 m**
Displacement **1,269 kg**
DLR **5.6329**
IMS Division **Sportboat**
Dynamic Allowance **0.000%**
Age Allowance **0.487%**

PROPELLER

Installation **No Propeller**
Type **N/A**
Diameter **N/A**

CREW

Maximum weight **400 kg**
Minimum weight **300 kg** * when applied
Non Manual Power **No**
Crew Arm Extension **-0.20 m**

SAIL AREAS (m²)

	Measured	Rated
Mainsail	15.66	16.03
Headsail Luffed	18.78	18.78
Headsail Flying		
Symmetric	35.34	35.34
Asymmetric		

STORM SAIL AREAS (m²)

Trysail **4.44**
Storm Jib **3.37**
Heavy Weather Jib **9.08**

SAIL LIMITS

Headsails **5**
Spinnakers **4**

STABILITY

Righting Moment **N/A**
Stability Index **N/A**

The owner and any other person in charge is responsible that boat is complying with her certificate in accordance with RRS 78.1 and ORC Rule 304.

Rated boat velocities in knots

Wind Velocity	6 kt	8 kt	10 kt	12 kt	14 kt	16 kt	20 kt
Beat Angles	43.5°	41.7°	39.6°	38.4°	38.2°	38.2°	39.6°
Beat VMG	3.08	3.68	4.09	4.33	4.40	4.42	4.37
52°	4.68	5.44	5.83	6.04	6.14	6.20	6.22
60°	4.92	5.62	5.97	6.18	6.32	6.40	6.46
75°	5.06	5.72	6.07	6.34	6.56	6.71	6.87
90°	4.98	5.68	6.14	6.45	6.65	6.90	7.28
110°	4.86	5.73	6.21	6.62	6.99	7.35	8.01
120°	4.71	5.61	6.12	6.53	6.93	7.36	8.69
135°	4.23	5.15	5.85	6.26	6.65	7.05	8.23
150°	3.56	4.54	5.35	5.92	6.30	6.66	7.46
Run VMG	3.09	3.94	4.66	5.33	5.83	6.19	6.87
Gybe Angles	146.8°	151.6°	155.0°	168.5°	177.2°	179.0°	178.4°



Time Allowances in secs/NM							
Wind Velocity	6 kt	8 kt	10 kt	12 kt	14 kt	16 kt	20 kt
Beat VMG	1169.4	977.7	880.3	832.3	818.7	813.7	823.8
52°	768.6	661.8	617.1	595.6	586.0	580.9	579.1
60°	731.2	640.0	603.4	582.3	569.4	562.7	557.4
75°	711.3	629.9	592.8	568.0	549.0	536.3	524.0
90°	723.5	633.7	586.2	557.9	541.1	522.1	494.2
110°	740.6	628.7	579.6	543.9	515.0	489.6	449.4
120°	763.8	641.6	588.1	551.5	519.5	488.8	414.4
135°	850.4	698.8	615.7	575.2	541.6	510.8	437.5
150°	1010.1	792.2	672.7	608.0	571.8	540.6	482.5
Run VMG	1166.3	913.8	771.9	676.0	617.0	581.4	523.8
Selected Courses							
Windward / Leeward	1167.9	945.7	826.1	754.2	717.8	697.5	673.8
All purpose	899.5	749.1	672.2	628.0	603.2	584.8	556.5

Single Number Scoring Options		
Course	Time On Distance	Time On Time
Windward / Leeward	791.5	0.7581
All purpose	649.7	0.9235



Data in meters/kilograms (Metric)

HULL AND APPENDAGES (Lightship Trim)

Class	J-24	LOA	7.318	VCGD	0.049
Measurement	01/02/1977	Max. Beam	2.692	VCGM	0.076
HIN		Draft	1.225	RM Rated (kg·m)	27.0
Plan review		Displacement	1,269	Limit of positive stability(°)	N/A
Hull construction	Solid	Wetted area	10.37	Stability Index	N/A
Carbon Rudder	No	IMS L	6.506		
Light stanchions	No	LSM0	6.085		
Trim tab	No	Acc. length	7.318		
		Sink (kg/mm)	8.53		

PROPELLER

Propeller Type	No Propeller
Hydro generator	No PIPA 0.0000

RIG

Forestay tension	Aft	P	8.538	E	2.970
Inner stay	None Fitted	IG	8.125	J	2.900
Carbon mast	No	ISP	8.210	BAS	1.080
Headsail furler	No	MDT1	0.087	FSD	
Mainsail furler	No	MDL1	0.124	SFJ	
Articulated bowsprit	No	MDT2	0.087	SPL	2.975
Non-circular rigging	No	MDL2	0.124	WPL	
Fiber rigging	No	TL	0.000	TPS	
Runners/Checkstays	0	MW	0.124	BD	0.085
Spreaders	1	GO	0.150	MWT	
Rotating mast	No			MCG	

FLOTATION AND STABILITY

Calculation method	Poles inclining	SFFP	0.286	SAFP	7.317	W1	20.0	PD1	332.0	WD	5.680
Flotation Date	16/04/2015	FFM		FAM		W2	20.0	PD2	330.0	PLM	9000.00
Measurer		FF	0.808	FA	0.699	W3	20.0	PD3	331.0	GSA	1.0
Comment		LCFcl	4.079	LCFsh	4.293	W4	20.0	PD4	332.0	RSA	1.0
		SG	1.0250	HBI	0.732					RM	27.0



MAINSAIL

<i>Id</i>	<i>MHB</i>	<i>MUW</i>	<i>MTW</i>	<i>MHW</i>	<i>MQW</i>	<i>Area</i>	<i>Meas.Date</i>	<i>Comment</i>
ORC	0.15	0.70	1.18	1.98	2.60	15.66		Class rules

HEADSAIL

<i>Id</i>	<i>HHB</i>	<i>HUW</i>	<i>HTW</i>	<i>HHW</i>	<i>HQW</i>	<i>HLP</i>	<i>HLU</i>	<i>Btn</i>	<i>Flying FT</i>	<i>Area</i>	<i>Meas.Date</i>	<i>Comment</i>
ORC	0.10					4.35	8.46	No	No	18.78		Class rules

SYMMETRIC SPINNAKER

<i>Id</i>	<i>SLU</i>	<i>SLE</i>	<i>SL</i>	<i>SHW</i>	<i>SFL</i>	<i>Area</i>	<i>Meas.Date</i>	<i>Comment</i>
ORC	8.13	8.13	8.13	5.22	5.20	35.34		Class rules