

# Genoa: 7000108 Allen-2 B351 RFGNdes.des

Design Info  
=====

Design File:  
\\NAS\Engineering files\Queenie-Customer Order\Fareast Sails\2023 Order\Need to be Confirmed\7000108 Allen\7000

Initial Design Date: 4/3/2023  
Boat:

Comments:  
please check luff net length

Client:

Design Data  
=====

Genoa

Measurements

Luff geodesic: 42.421Ft  
 Leech geodesic: 40.459Ft  
 Foot geodesic: 17.169Ft  
 Headboard width: 0.112Ft  
 Luff perpendicular (HLP): 16.366Ft  
 Upper width (HUW): 1.817Ft  
 Three-quarter width (HTW): 3.605Ft  
 Half width (HHW): 7.536Ft  
 Quarter width (HQW): 11.837Ft  
 Foot median: 41.074Ft  
 ORC Headsail area: 332.534Ft?  
 IRC Headsail area: 331.756Ft?  
 Surface area: 334.209Ft?  
 Forestay height: 42.750Ft  
 J: 13.910Ft

Luff Curve

42.413Ft, 0.000Ft  
 38.888Ft, 0.147Ft  
 34.991Ft, 0.265Ft  
 31.559Ft, 0.326Ft  
 27.569Ft, 0.349Ft  
 21.106Ft, 0.307Ft  
 13.784Ft, 0.208Ft  
 7.169Ft, 0.104Ft  
 0.000Ft, 0.000Ft

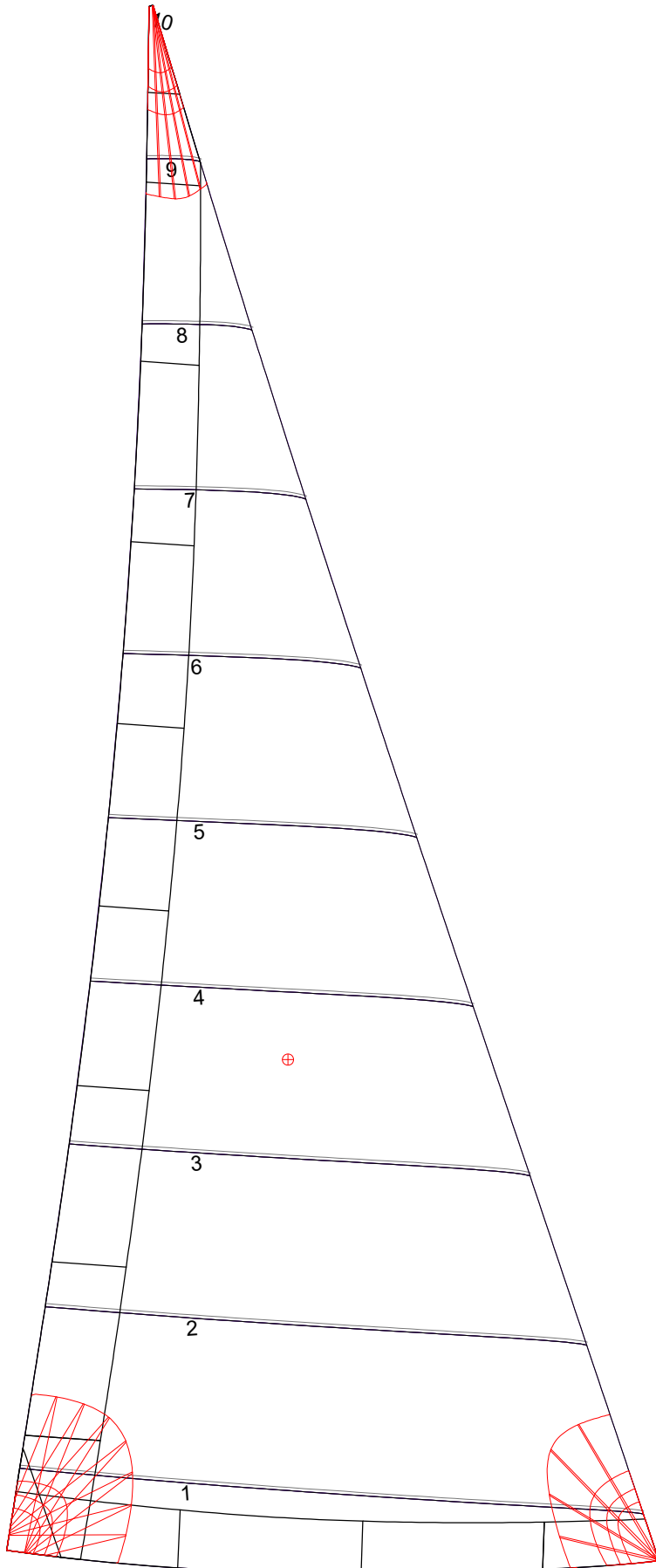
Fanned Luff (@ 5.00% [0.846Ft])

100% (42.414Ft) : 0.000Ft  
 90% (38.169Ft) : -0.155Ft  
 80% (33.938Ft) : -0.270Ft  
 70% (29.692Ft) : -0.325Ft  
 60% (25.451Ft) : -0.332Ft  
 50% (21.208Ft) : -0.302Ft  
 40% (16.967Ft) : -0.249Ft  
 30% (12.724Ft) : -0.188Ft  
 20% (8.485Ft) : -0.123Ft  
 10% (4.239Ft) : -0.060Ft  
 0% (0.000Ft) : -0.000Ft

Before BSeam

0.000Ft  
 -0.028Ft  
 -0.035Ft  
 -0.016Ft  
 0.020Ft  
 0.060Ft  
 0.086Ft  
 0.090Ft  
 0.081Ft  
 0.057Ft  
 0.000Ft

# Genoa: 7000108 Allen-2 B351 RFGNdes.des



## Seam Allowances

Zone:	Split	Radial	Cross
Zone: 1	0.000Ft	0.000Ft	0.082Ft
Cover 1	0.082Ft	0.082Ft	0.082Ft
Cover 2	0.082Ft	0.082Ft	0.082Ft
Cover 3	0.000Ft	0.000Ft	0.000Ft
Cover 4	0.000Ft	0.000Ft	0.000Ft

## Edge Excesses

Sail:	Luff	Leech	Foot
Sail:	0.000Ft	0.000Ft	0.000Ft
Cover 0	0.230Ft	0.230Ft	0.230Ft
Cover 1	0.230Ft	0.230Ft	0.230Ft
Cover 2	0.000Ft	0.230Ft	0.230Ft
Cover 3	0.000Ft	0.230Ft	0.230Ft

## Total Seam Lengths (Ft)

Horizontal	78.41
Radial/Vertical	0.00
Bi-Radial Split	0.00

## Materials

Material	Area (Ft <sup>2</sup> )	Panels
Material 1	335.14	1,2,3,4,5 6,7,8,9,10