

Genoa: 7000108 Allen-2 B351 RFGN V1.des

Design Info
=====

Design File:
\\NAS\Engineering files\Queenie-Customer Order\Fareast Sails\2023 Orders\Need to be Confirmed\7000108 Allen\700

Initial Design Date: 15/5/2024
Boat:
Beneteau351
Client:

Comments:
please check luff net length

Design Data
=====

Genoa

Measurements

Luff geodesic: 40.870Ft
Leech geodesic: 38.876Ft
Foot geodesic: 17.631Ft
Headboard width: 0.112Ft
Luff perpendicular (HLP): 16.743Ft
Upper width (HUW): 1.868Ft
Three-quarter width (HTW): 3.708Ft
Half width (HHW): 7.736Ft
Quarter width (HQW): 12.130Ft
Foot median: 39.412Ft
ORC Headsail area: 328.357Ft?
IRC Headsail area: 327.594Ft?
Surface area: 329.861Ft?
Forestay height: 42.750Ft
J: 13.910Ft

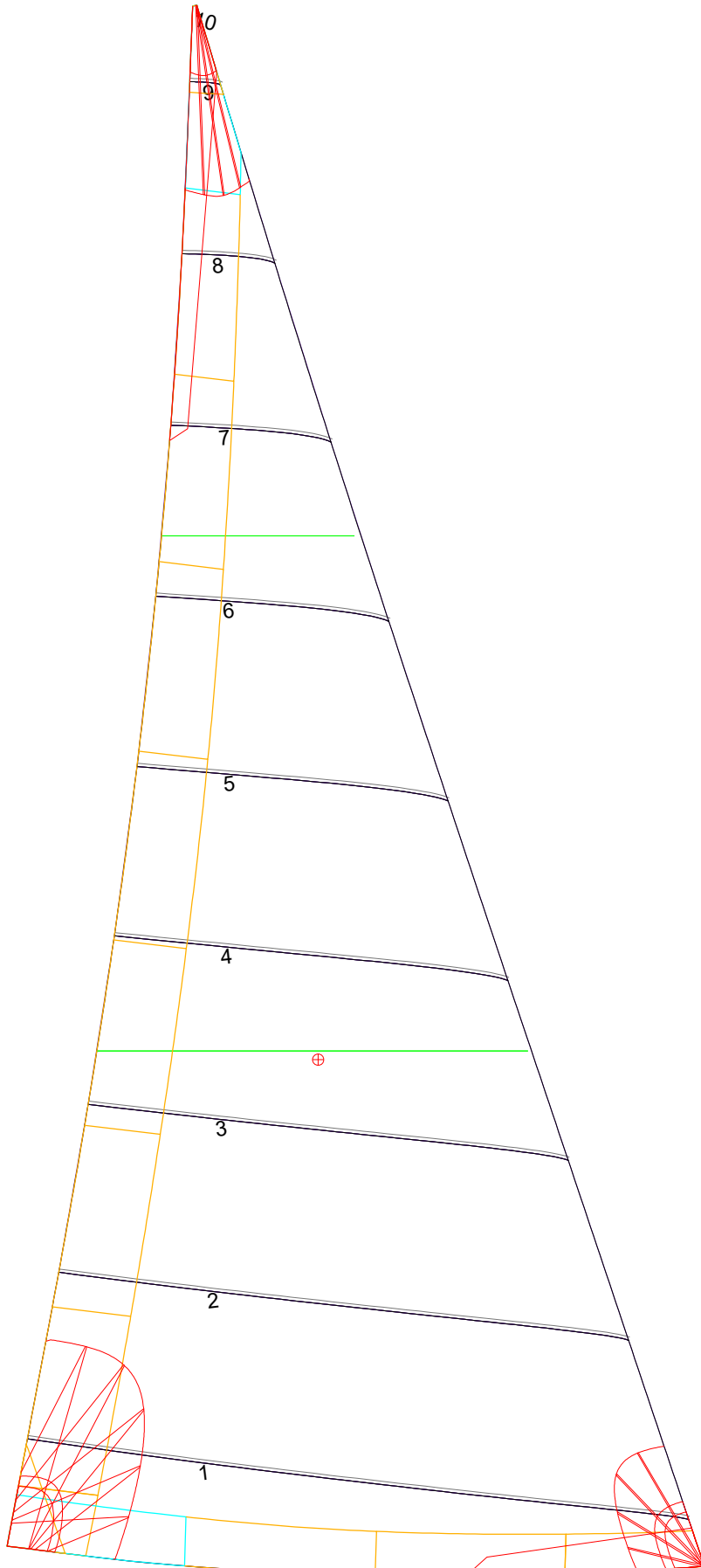
Draft Stripes

1, Luff: 13.555Ft ; Leech: 12.602Ft ;
2, Luff: 27.084Ft ; Leech: 25.480Ft ;

Luff Curve

		Fanned Luff (@ 5.00% [0.868Ft])	Before BSeam
40.861Ft,	0.000Ft	100% (40.863Ft) :	0.000Ft
37.466Ft,	0.147Ft	90% (36.773Ft) :	-0.156Ft
33.710Ft,	0.265Ft	80% (32.696Ft) :	-0.272Ft
30.405Ft,	0.326Ft	70% (28.606Ft) :	-0.328Ft
26.561Ft,	0.349Ft	60% (24.520Ft) :	-0.336Ft
20.334Ft,	0.307Ft	50% (20.433Ft) :	-0.306Ft
13.280Ft,	0.208Ft	40% (16.346Ft) :	-0.254Ft
6.907Ft,	0.104Ft	30% (12.259Ft) :	-0.192Ft
0.000Ft,	0.000Ft	20% (8.175Ft) :	-0.126Ft
		10% (4.084Ft) :	-0.062Ft
		0% (0.000Ft) :	-0.000Ft

Genoa: 7000108 Allen-2 B351 RFGN V1.des



Seam Allowances

Zone:	Split	Radial	Cross
Zone: 1	0.000Ft	0.000Ft	0.082Ft
Cover 1	0.082Ft	0.082Ft	0.082Ft
Cover 2	0.082Ft	0.082Ft	0.082Ft
Cover 3	0.000Ft	0.000Ft	0.000Ft
Cover 4	0.000Ft	0.000Ft	0.000Ft

Edge Excesses

Sail:	Luff	Leech	Foot
Sail:	0.000Ft	0.000Ft	0.000Ft
Cover 0	0.230Ft	0.230Ft	0.230Ft
Cover 1	0.230Ft	0.230Ft	0.230Ft
Cover 2	0.000Ft	0.230Ft	0.230Ft
Cover 3	0.000Ft	0.230Ft	0.230Ft

Total Seam Lengths (Ft)

Horizontal	76.71
Radial/Vertical	0.00
Bi-Radial Split	0.00

Materials

Material	Area (Ft ²)	Panels
Material 1	330.76	1,2,3,4,5 6,7,8,9,10