

Genoa: 6001222 Ferd Head-2.des

Design Info

=====

Design File:

F:\Dropbox\Dropbox\Fareast Sails\2022 Order\Need confirm order\6001222 Ferd\6001222 Ferd Head-2.des

Initial Design Date: 5/1/2023

Boat:

Client:

Comments:

Design Data

=====

Genoa

Measurements

| | |
|----------------------------|---------|
| Luff geodesic: | 6.059m |
| Leech geodesic: | 5.283m |
| Foot geodesic: | 3.382m |
| Headboard width: | 0.030m |
| Luff perpendicular (HLP): | 2.970m |
| Upper width (HUW): | 0.352m |
| Three-quarter width (HTW): | 0.689m |
| Half width (HHW): | 1.414m |
| Quarter width (HQW): | 2.182m |
| Foot median: | 5.552m |
| ORC Headsail area: | 8.783m? |
| IRC Headsail area: | 8.761m? |
| Surface area: | 8.931m? |
| Forestay height: | 6.630m |
| J: | 2.200m |

Luff Curve

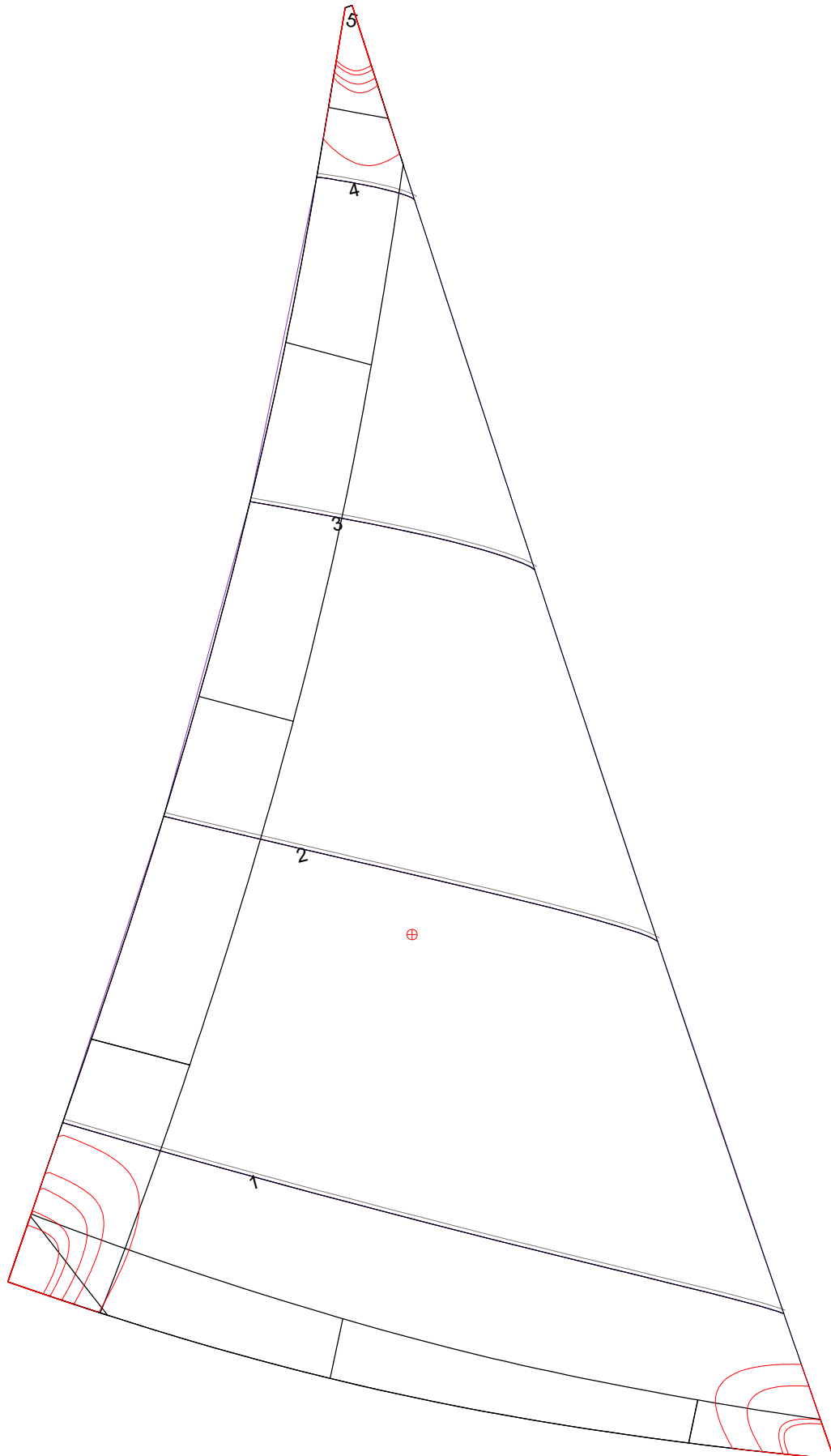
| | |
|---------|--------|
| 6.058m, | 0.000m |
| 4.544m, | 0.026m |
| 3.030m, | 0.035m |
| 1.515m, | 0.026m |
| 0.000m, | 0.000m |

Fanned Luff (@ 5.00% [0.164m])

| | | |
|-----------------|---------|--------|
| 100% (6.058m) : | 0.000m | 0.000m |
| 90% (5.453m) : | -0.011m | 0.009m |
| 80% (4.847m) : | -0.021m | 0.018m |
| 70% (4.241m) : | -0.029m | 0.027m |
| 60% (3.635m) : | -0.034m | 0.034m |
| 50% (3.029m) : | -0.036m | 0.036m |
| 40% (2.423m) : | -0.036m | 0.034m |
| 30% (1.817m) : | -0.033m | 0.029m |
| 20% (1.212m) : | -0.025m | 0.021m |
| 10% (0.605m) : | -0.014m | 0.010m |
| 0% (0.000m) : | 0.000m | 0.000m |

Before BSeam

Genoa: 6001222 Ferd Head-2.des



Seam Allowances

| Zone: | Split | Radial | Cross |
|---------|--------|--------|--------|
| Zone: 1 | 0.000m | 0.000m | 0.015m |
| Cover 1 | 0.025m | 0.025m | 0.025m |
| Cover 2 | 0.025m | 0.025m | 0.025m |
| Cover 3 | 0.025m | 0.025m | 0.025m |
| Cover 4 | 0.025m | 0.025m | 0.025m |

Edge Excesses

| Sail: | Luff | Leech | Foot |
|---------|--------|--------|--------|
| Cover 0 | 0.100m | 0.100m | 0.100m |
| Cover 1 | 0.100m | 0.100m | 0.100m |
| Cover 2 | 0.070m | 0.100m | 0.070m |
| Cover 3 | 0.070m | 0.100m | 0.070m |

Total Seam Lengths (m)

| | |
|-----------------|------|
| Horizontal | 6.77 |
| Radial/Vertical | 0.00 |
| Bi-Radial Split | 0.00 |

Materials

| Material | Area (m ²) | Panels |
|------------|------------------------|-----------|
| Material 1 | 8.97 | 1,2,3,4,5 |