

Mainsail: 6001214 Philippe mainsail-ok.des

Design Info
=====

Design File:
F:\Dropbox\Dropbox-20221019\Dropbox20221213\Dropbox\Fareast Sails\2023 Order\Passed to Production\6001214 P

Initial Design Date: 31/1/2023
Boat:

Comments:
leech length base on tack angle 88.5 degree.

Client:

Design Data
=====

Main

Measurements

Luff geodesic: 11.089m
Leech geodesic: 11.730m
Foot geodesic: 3.621m
Head geodesic: 0.115m
Upper width (MUW): 0.696m
Three-quarter width (MTW): 1.270m
Half width (MHW): 2.244m
Quarter width (MQW): 2.997m
Foot median: 11.387m
ORC Mainsail area: 23.232m?
Surface area: 23.785m?
Clew height: -0.033m
Mast rake: 0.000m

Battens

Position	Length	Roach	Angle	Luff	Leech	Full
80.000%	1.093m	0.200m	72.024?	8.871m	9.354m	Full
60.000%	1.924m	0.268m	72.024?	6.653m	7.016m	Full
40.000%	2.601m	0.242m	72.024?	4.436m	4.677m	Full
20.000%	3.143m	0.138m	72.024?	2.218m	2.339m	Full

Reefing Points

1, Luff: 1.664m ; Leech: 1.729m ; Offset: 0.000m ; Number Eyelets: 2
2, Luff: 3.327m ; Leech: 3.458m ; Offset: 0.000m ; Number Eyelets: 2

Draft Stripes

1, Luff: 3.660m ; Leech: 3.830m ;
2, Luff: 7.319m ; Leech: 7.654m ;

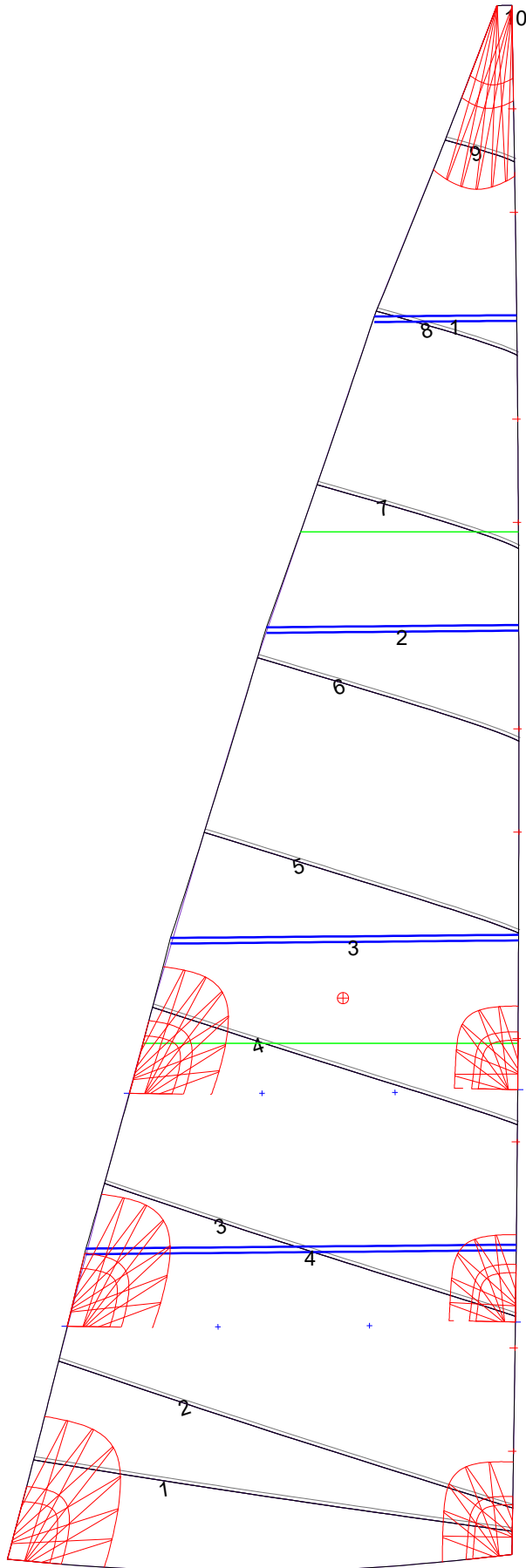
Luff Slides

1, Position: 0.739m
2, Position: 1.477m
3, Position: 2.955m
4, Position: 3.694m
5, Position: 5.171m
6, Position: 5.910m
7, Position: 7.388m
8, Position: 8.127m
9, Position: 9.607m
10, Position: 10.348m

Luff Curve

		Fanned Luff (@ 5.00% [0.180m])	Before BSeam
11.089m,	0.000m	100% (11.089m) :	0.000m
9.707m,	-0.023m	90% (9.980m) :	0.039m
8.316m,	-0.040m	80% (8.871m) :	0.075m
6.923m,	-0.048m	70% (7.762m) :	0.103m
5.544m,	-0.050m	60% (6.653m) :	0.119m
4.132m,	-0.046m	50% (5.545m) :	0.122m
2.772m,	-0.037m	40% (4.436m) :	0.111m
1.382m,	-0.021m	30% (3.327m) :	0.091m
0.000m,	0.000m	20% (2.218m) :	0.063m
		10% (1.109m) :	0.030m
		0% (0.000m) :	0.000m

Mainsail: 6001214 Philippe mainsail-ok.des



Seam Allowances			
Zone: 1	Split	Radial	Cross
	0.000m	0.000m	0.025m

Edge Excesses			
Sail:	Luff	Leech	Foot
	0.000m	0.000m	0.000m

Total Seam Lengths (m)

Horizontal	20.74
Radial/Vertical	0.00
Bi-Radial Split	0.00

Materials

Material	Area (m ²)	Panels
Material 1	23.80	1,2,3,4,5 6,7,8,9,10