

# Mainsail: 6001213 Steve.des

Design Info  
=====

Design File:  
F:\Dropbox\Dropbox-20221019\Dropbox20221213\Dropbox\Fareast Sails\2022 Order\Need confirm order\6001213 Ste

Initial Design Date: 16/11/2022  
Boat:

Comments:

Client:

Design Data  
=====

## Main

### Measurements

Luff geodesic: 11.484m  
 Leech geodesic: 12.015m  
 Foot geodesic: 3.861m  
 Head geodesic: 0.115m  
 Upper width (MUW): 0.731m  
 Three-quarter width (MTW): 1.344m  
 Half width (MHW): 2.379m  
 Quarter width (MQW): 3.190m  
 Foot median: 11.716m  
 ORC Mainsail area: 25.556m?  
 Surface area: 26.141m?  
 Clew height: 0.100m  
 Mast rake: 0.000m

### Battens

Position	Length	Roach	Angle	Luff	Leech	Full
80.000%	1.157m	0.216m	73.341?	9.183m	9.582m	Full
60.000%	2.043m	0.290m	73.341?	6.886m	7.187m	Full
40.000%	2.756m	0.252m	73.341?	4.591m	4.791m	Full
20.000%	3.348m	0.150m	73.341?	2.295m	2.396m	Full

### Reefing Points

1, Luff: 1.722m ; Leech: 1.777m ; Offset: 0.000m ; Number Eyelets: 2  
 2, Luff: 3.444m ; Leech: 3.557m ; Offset: 0.000m ; Number Eyelets: 2  
 3, Luff: 5.167m ; Leech: 5.341m ; Offset: 0.000m ; Number Eyelets: 2

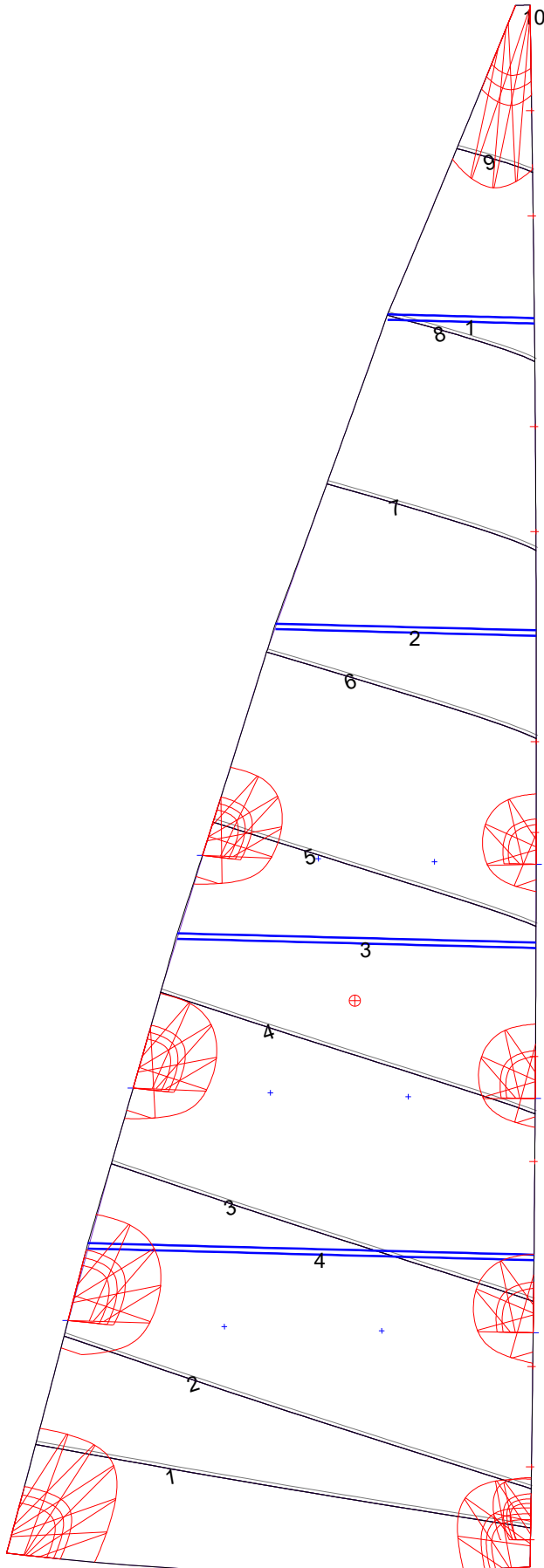
### Luff Slides

1, Position: 0.736m  
 2, Position: 1.472m  
 3, Position: 2.980m  
 4, Position: 3.752m  
 5, Position: 5.400m  
 6, Position: 6.068m  
 7, Position: 7.613m  
 8, Position: 8.385m  
 9, Position: 9.933m  
 10, Position: 10.709m

### Luff Curve

		Fanned Luff (@ 5.00% [0.192m])	Before BSeam
11.484m,	0.000m	100% (11.484m) :	0.000m
10.053m,	-0.021m	90% (10.336m) :	0.011m
8.613m,	-0.037m	80% (9.187m) :	0.021m
7.169m,	-0.044m	70% (8.039m) :	0.027m
5.742m,	-0.046m	60% (6.890m) :	0.029m
4.279m,	-0.043m	50% (5.742m) :	0.029m
2.871m,	-0.034m	40% (4.594m) :	0.027m
1.431m,	-0.019m	30% (3.445m) :	0.022m
0.000m,	0.000m	20% (2.297m) :	0.016m
		10% (1.148m) :	0.008m
		0% (0.000m) :	0.000m

# Mainsail: 6001213 Steve.des



Seam Allowances			
Zone: 1	Split	Radial	Cross
	0.000m	0.000m	0.025m

Edge Excesses			
Sail:	Luff	Leech	Foot
	0.000m	0.000m	0.000m

### Total Seam Lengths (m)

Horizontal	22.04
Radial/Vertical	0.00
Bi-Radial Split	0.00

### Materials

Material	Area (m <sup>2</sup> )	Panels
Material 1	26.16	1,2,3,4,5 6,7,8,9,10