

Mainsail: 6001204 Torodd Dehler 29-1 Main.des

Design Info
=====

Design File:
F:\Dropbox\Dropbox\Fareast Sails\2022 Order\Need confirm order\6001204 Torodd\6001204 Torodd Dehler 29-1 Main

Initial Design Date: 13/12/2022
Boat:

Comments:

Client:

Design Data
=====

Main

Measurements

Luff geodesic: 11.180m
Leech geodesic: 11.775m
Foot geodesic: 3.980m
Head geodesic: 0.120m
Upper width (MUW): 0.853m
Three-quarter width (MTW): 1.575m
Half width (MHW): 2.653m
Quarter width (MQW): 3.392m
Foot median: 11.457m
ORC Mainsail area: 27.038m?
Surface area: 27.979m?
Clew height: 0.100m
Mast rake: 0.000m

Battens

Position	Length	Roach	Angle	Luff	Leech	Full
80.000%	1.408m	0.396m	72.227?	8.939m	9.378m	Full
60.000%	2.366m	0.507m	72.227?	6.705m	7.033m	Full
40.000%	3.015m	0.388m	72.227?	4.472m	4.689m	Full
20.000%	3.536m	0.214m	72.227?	2.239m	2.344m	Full

Reefing Points

1, Luff: 1.676m ; Leech: 1.727m ; Offset: 0.000m ; Number Eyelets: 3
2, Luff: 3.353m ; Leech: 3.455m ; Offset: 0.000m ; Number Eyelets: 3
3, Luff: 6.930m ; Leech: 7.156m ; Offset: 0.000m ; Number Eyelets: 2

Luff Slides

1, Position: 0.744m
2, Position: 1.488m
3, Position: 2.978m
4, Position: 3.722m
5, Position: 5.212m
6, Position: 5.957m
7, Position: 7.447m
8, Position: 8.192m
9, Position: 9.685m
10, Position: 10.433m

Luff Curve

		Fanned Luff (@ 5.00% [0.198m])	Before BSeam
11.179m,	0.000m	100% (11.180m) :	0.000m
9.786m,	-0.038m	90% (10.062m) :	0.021m
8.384m,	-0.065m	80% (8.944m) :	0.040m
6.979m,	-0.078m	70% (7.826m) :	0.051m
6.724m,	-0.080m	60% (6.708m) :	0.056m
5.589m,	-0.081m	50% (5.590m) :	0.057m
4.165m,	-0.075m	40% (4.472m) :	0.053m
2.795m,	-0.060m	30% (3.354m) :	0.046m
1.393m,	-0.034m	20% (2.236m) :	0.034m
0.000m,	0.000m	10% (1.118m) :	0.018m
		0% (0.000m) :	0.000m

Mainsail: 6001204 Torodd Dehler 29-1 Main.des

Seam Allowances

Zone:	Split	Radial	Cross
Zone: 1/a	0.038m	0.015m	0.038m
Zone: 1/b	0.038m	0.015m	0.038m
Zone: 2/a	0.038m	0.015m	0.038m
Zone: 2/b	0.038m	0.015m	0.038m
Zone: 3	0.038m	0.015m	0.038m

Edge Excesses

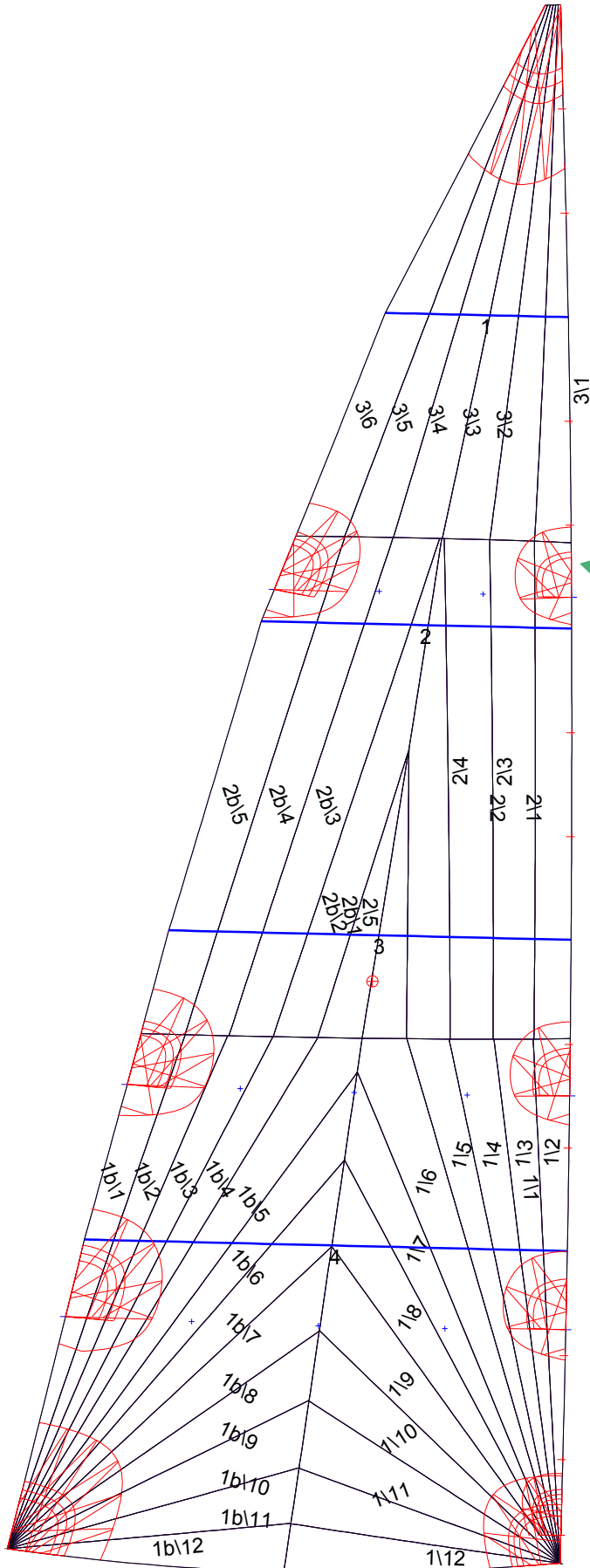
Sail:	Luff	Leech	Foot
	0.000m	0.000m	0.000m

Total Seam Lengths (m)

Horizontal	5.30
Radial/Vertical	117.58
Bi-Radial Split	7.84

Materials

Material	Area (m ²)	Panels
Material 1	28.02	1\1,1\2,1\3,1\4,1\5 1\6,1\7,1\8,1\9,1\10 1\11,1\12,1b\1,1b\2,1b\3 1b\4,1b\5,1b\6,1b\7,1b\8 1b\9,1b\10,1b\11,1b\12,2\1 2\2,2\3,2\4,2\5,2b\1 2b\2,2b\3,2b\4,2b\5,3\1 3\2,3\3,3\4,3\5,3\6



Type	
Reef 1 starboard	
Reef 2 port	
Reef 3 (-40% of luff/starboard)	

Is it correct for reef 3?