

Mainsail: 6001125 Alex-Leopard 38 Main.des

Design Info
=====

Design File:
F:\Dropbox\Dropbox\Fareast Sails\2022 Order\Need confirm order\6001125 Alex\6001125 Alex-Leopard 38 Main.des

Initial Design Date: 8/12/2022
Boat:

Comments:

Client:

Design Data
=====

Main

Measurements

Luff geodesic:	13.500m
Leech geodesic:	13.872m
Foot geodesic:	5.170m
Head geodesic:	0.200m
Upper width (MUW):	1.289m
Three-quarter width (MTW):	2.335m
Half width (MHW):	3.723m
Quarter width (MQW):	4.517m
Foot median:	13.615m
ORC Mainsail area:	44.787m?
Surface area:	46.576m?
Clew height:	0.496m
Mast rake:	0.361m

Battens

Position	Length	Roach	Angle	Luff	Leech	Full
86.815%	1.597m	0.651m	76.092?	11.693m	11.959m	Full
74.704%	2.609m	0.979m	76.092?	10.060m	10.291m	Full
61.190%	3.388m	1.030m	76.092?	8.238m	8.429m	Full
45.964%	3.971m	0.857m	76.092?	6.187m	6.332m	Full
27.147%	4.504m	0.524m	76.092?	3.653m	3.740m	Full

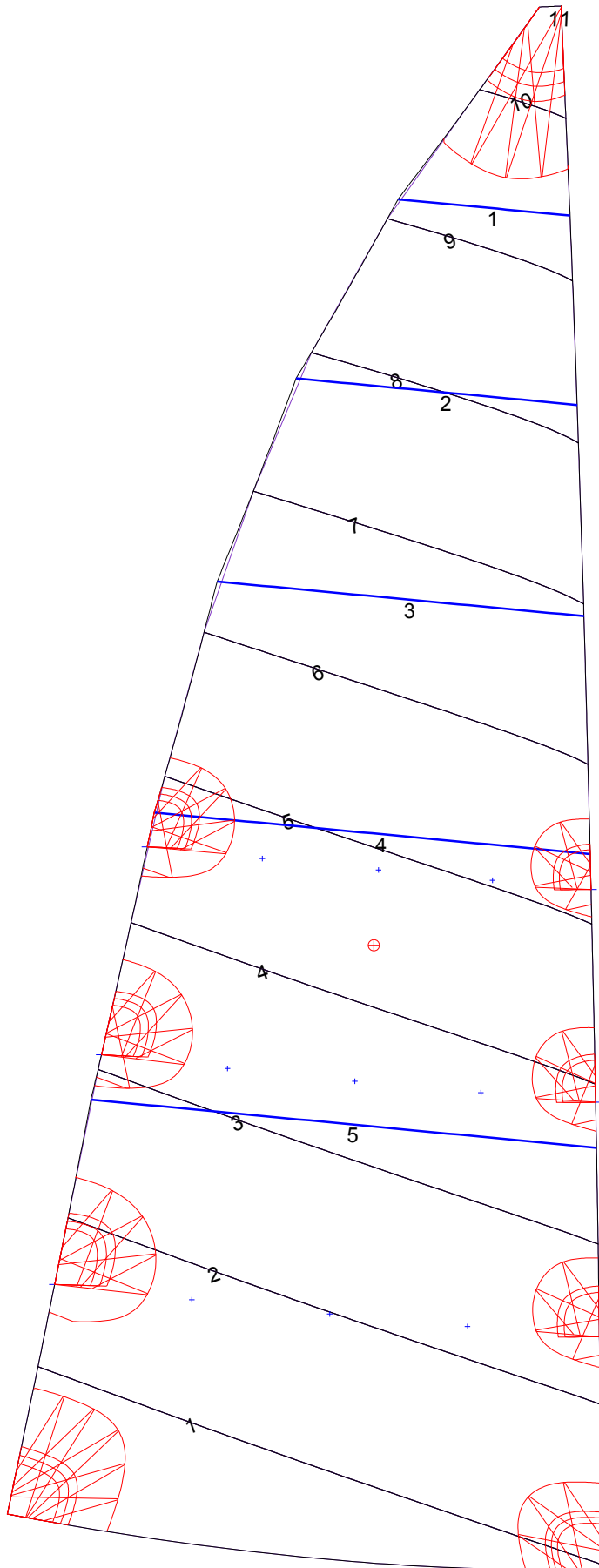
Reefing Points

1, Luff: 2.022m ; Leech: 2.035m ; Offset: 0.000m ; Number Eyelets: 3
2, Luff: 4.044m ; Leech: 4.065m ; Offset: 0.000m ; Number Eyelets: 3
3, Luff: 5.879m ; Leech: 5.905m ; Offset: 0.000m ; Number Eyelets: 3

Luff Curve

		Fanned Luff (@ 5.00% [0.256m])	Before BSeam
13.500m,	0.000m	100% (13.500m) :	0.000m
11.817m,	-0.028m	90% (12.151m) :	0.062m
10.125m,	-0.048m	80% (10.800m) :	0.119m
8.428m,	-0.058m	70% (9.450m) :	0.162m
6.750m,	-0.061m	60% (8.100m) :	0.180m
5.030m,	-0.056m	50% (6.750m) :	0.175m
3.375m,	-0.045m	40% (5.400m) :	0.153m
1.682m,	-0.025m	30% (4.050m) :	0.120m
0.000m,	0.000m	20% (2.700m) :	0.080m
		10% (1.351m) :	0.038m
		0% (0.000m) :	0.000m

Mainsail: 6001125 Alex-Leopard 38 Main.des



Seam Allowances			
Zone: 1	Split	Radial	Cross
	0.000m	0.000m	0.038m

Edge Excesses			
Sail:	Luff	Leech	Foot
	0.000m	0.000m	0.000m

Total Seam Lengths (m)

Horizontal	35.36
Radial/Vertical	0.00
Bi-Radial Split	0.00

Materials

Material	Area (m ²)	Panels
Material 1	46.58	1,2,3,4,5 6,7,8,9,10 11