

Mainsail: 6001123 Mcqueen-Beneteau Oceanis 461.des

Design Info
=====

Design File:
F:\Dropbox\Dropbox\Fareast Sails\2022 Order\Need confirm order\6001123 Mcqueen\6001123 Mcqueen-Beneteau Oceanis

Initial Design Date: 5/1/2023
Boat:

Comments:

Client:

Design Data
=====

Main

Measurements

Luff geodesic:	14.056m
Leech geodesic:	14.761m
Foot geodesic:	4.953m
Head geodesic:	0.190m
Upper width (MUW):	0.973m
Three-quarter width (MTW):	1.765m
Half width (MHW):	3.096m
Quarter width (MQW):	4.113m
Foot median:	14.393m
ORC Mainsail area:	40.560m?
Surface area:	41.655m?
Clew height:	0.100m
Mast rake:	0.000m

Battens

Position	Length	Roach	Angle	Luff	Leech	Full
80.000%	1.535m	0.288m	72.677?	11.237m	11.768m	Full
60.000%	2.684m	0.400m	72.677?	8.427m	8.826m	Full
40.000%	3.573m	0.338m	72.677?	5.618m	5.884m	Full
20.000%	4.311m	0.197m	72.677?	2.809m	2.942m	Full

Reefing Points

1, Luff: 2.248m ; Leech: 2.326m ; Offset: 0.000m ; Number Eyelets: 3
2, Luff: 4.497m ; Leech: 4.655m ; Offset: 0.000m ; Number Eyelets: 3

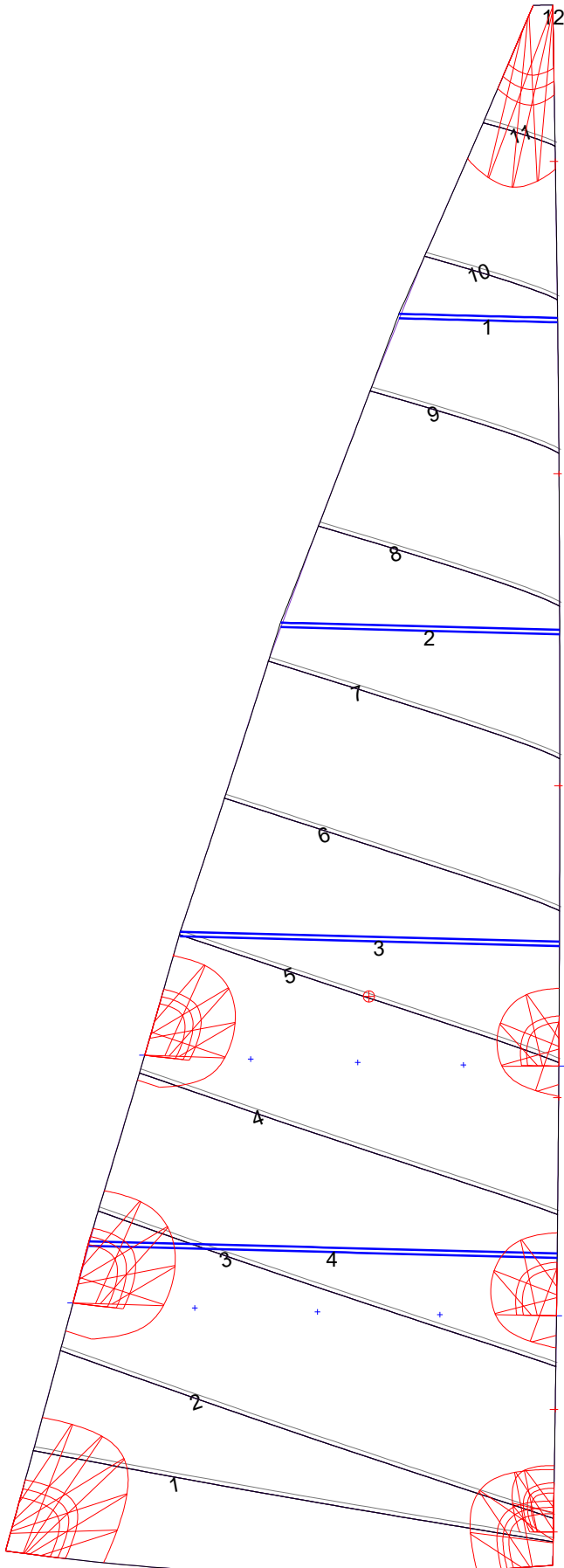
Luff Slides

1, Position: 1.404m
2, Position: 4.213m
3, Position: 7.022m
4, Position: 9.832m
5, Position: 12.647m

Luff Curve

		Fanned Luff (@ 5.00% [0.247m])	Before BSeam
14.056m,	0.000m	100% (14.056m) :	0.000m
12.304m,	-0.029m	90% (12.651m) :	0.051m
10.542m,	-0.050m	80% (11.245m) :	0.100m
8.775m,	-0.061m	70% (9.839m) :	0.139m
7.028m,	-0.063m	60% (8.434m) :	0.160m
5.237m,	-0.058m	50% (7.028m) :	0.162m
3.514m,	-0.047m	40% (5.622m) :	0.147m
1.752m,	-0.026m	30% (4.217m) :	0.120m
0.000m,	0.000m	20% (2.811m) :	0.082m
		10% (1.406m) :	0.040m
		0% (0.000m) :	0.000m

Mainsail: 6001123 Mcqueen-Beneteau Oceanis 461.des



Seam Allowances			
Zone: 1	Split	Radial	Cross
	0.000m	0.000m	0.038m

Edge Excesses			
Sail:	Luff	Leech	Foot
	0.000m	0.000m	0.000m

Total Seam Lengths (m)

Horizontal	34.45
Radial/Vertical	0.00
Bi-Radial Split	0.00

Materials

Material	Area (m ²)	Panels
Material 1	41.70	1,2,3,4,5 6,7,8,9,10 11,12