

Mainsail: 6001106 Marius-1 Main.des

Design Info
=====

Design File:
F:\Dropbox\Dropbox\Fareast Sails\2022 Order\Need confirm order\6001106 Marius\6001106 Marius-1 Main.des

Initial Design Date: 10/11/2022
Boat:

Comments:

Client:

Design Data
=====

Main

Measurements

Luff geodesic:	9.990m
Leech geodesic:	10.576m
Foot geodesic:	3.762m
Head geodesic:	0.115m
Upper width (MUW):	0.707m
Three-quarter width (MTW):	1.302m
Half width (MHW):	2.311m
Quarter width (MQW):	3.098m
Foot median:	10.259m
ORC Mainsail area:	21.600m?
Surface area:	22.237m?
Clew height:	0.100m
Mast rake:	0.000m

Battens

Position	Length	Roach	Angle	Luff	Leech	Full
80.000%	1.130m	0.208m	71.325?	7.987m	8.429m	Full
60.000%	1.993m	0.280m	71.325?	5.990m	6.322m	Full
40.000%	2.681m	0.239m	71.325?	3.993m	4.214m	Full
20.000%	3.253m	0.136m	71.325?	1.996m	2.107m	Full

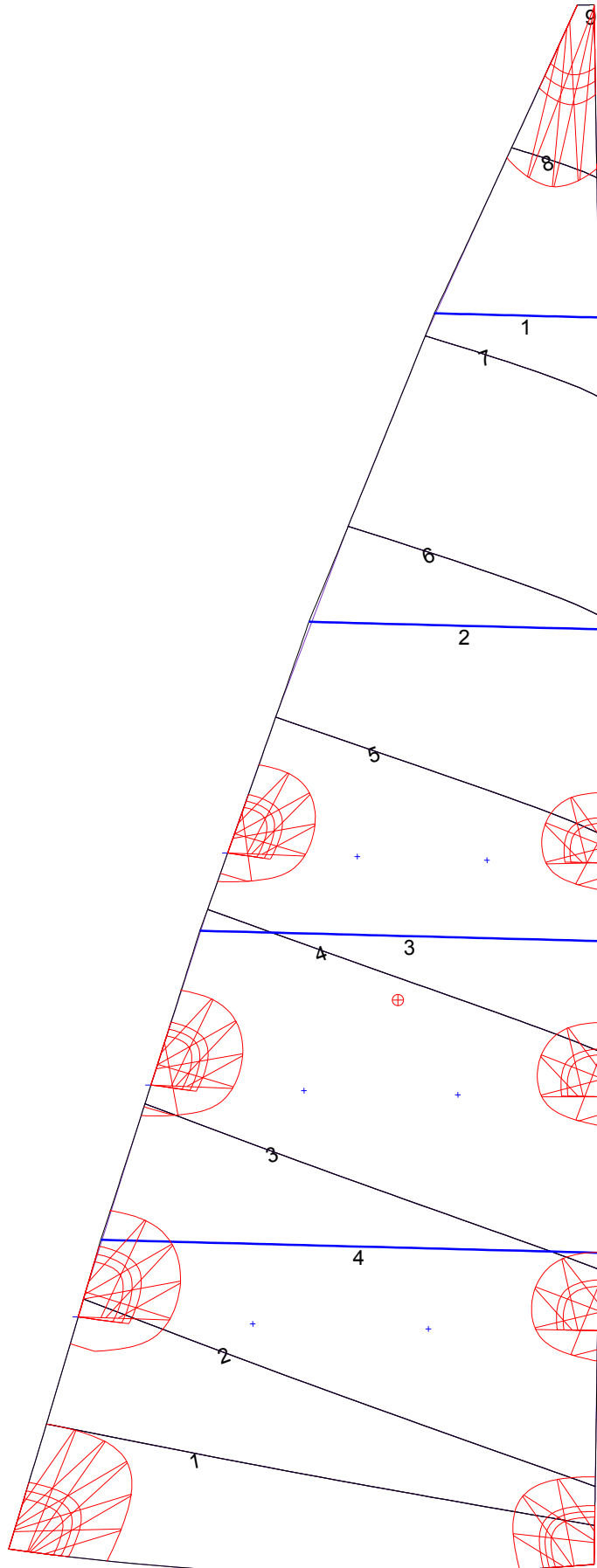
Reefing Points

1, Luff: 1.498m ; Leech: 1.561m ; Offset: 0.000m ; Number Eyelets: 2
2, Luff: 2.996m ; Leech: 3.123m ; Offset: 0.000m ; Number Eyelets: 2
3, Luff: 4.494m ; Leech: 4.688m ; Offset: 0.000m ; Number Eyelets: 2

Luff Curve

		Fanned Luff (@ 5.00% [0.187m])	Before BSeam
9.990m,	0.000m	100% (9.990m) :	0.000m
8.745m,	-0.021m	90% (8.991m) :	0.037m
7.492m,	-0.036m	80% (7.992m) :	0.074m
6.237m,	-0.043m	70% (6.993m) :	0.102m
4.995m,	-0.045m	60% (5.994m) :	0.118m
3.722m,	-0.041m	50% (4.995m) :	0.119m
2.497m,	-0.033m	40% (3.996m) :	0.109m
1.245m,	-0.019m	30% (2.997m) :	0.088m
0.000m,	0.000m	20% (1.998m) :	0.061m
		10% (0.999m) :	0.029m
		0% (0.000m) :	0.000m

Mainsail: 6001106 Marius-1 Main.des



Seam Allowances			
Zone: 1	Split	Radial	Cross
	0.000m	0.000m	0.025m

Edge Excesses			
Sail:	Luff	Leech	Foot
	0.000m	0.000m	0.000m

Total Seam Lengths (m)

Horizontal	19.08
Radial/Vertical	0.00
Bi-Radial Split	0.00

Materials

Material	Area (m ²)	Panels
Material 1	22.24	1,2,3,4,5 6,7,8,9