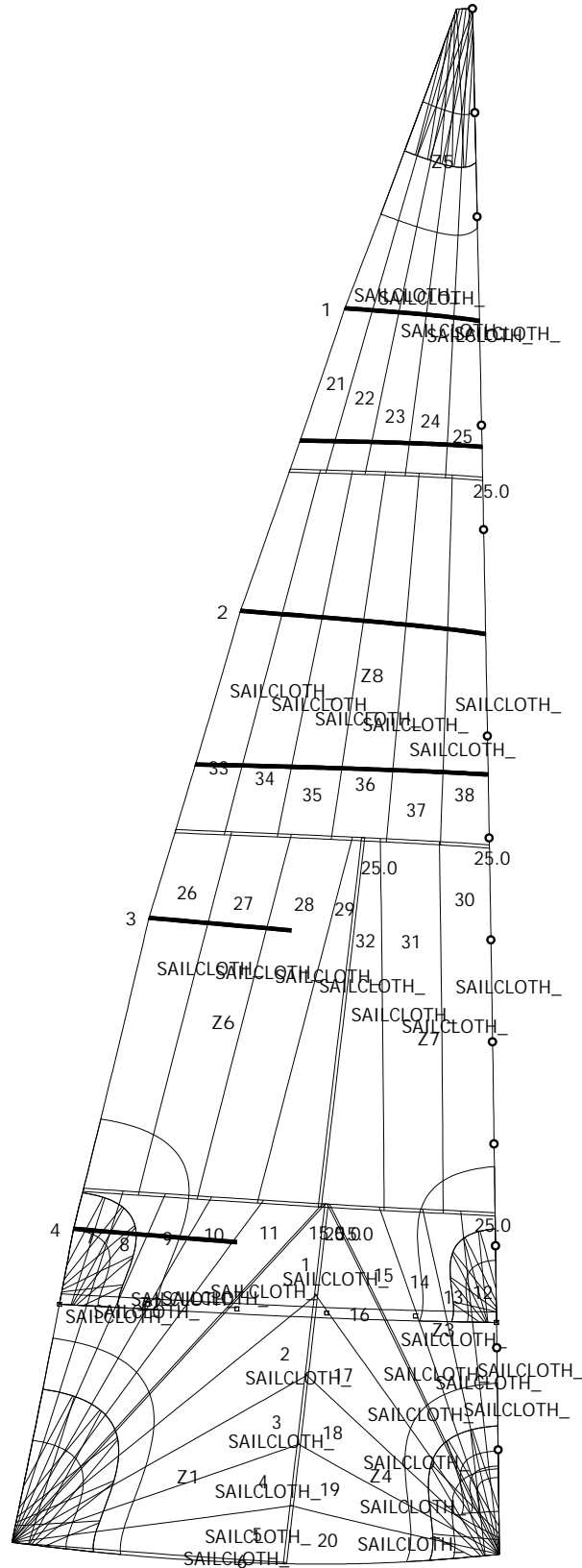




Panel layout

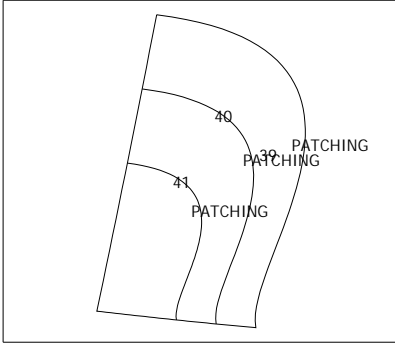


0 2m

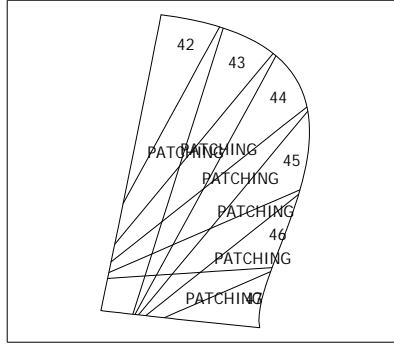




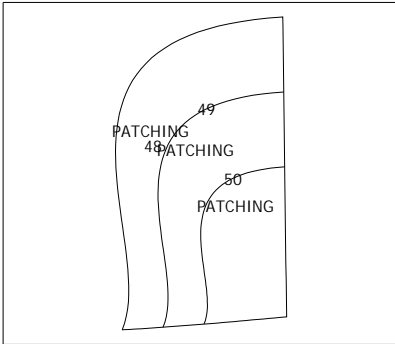
Patch layout



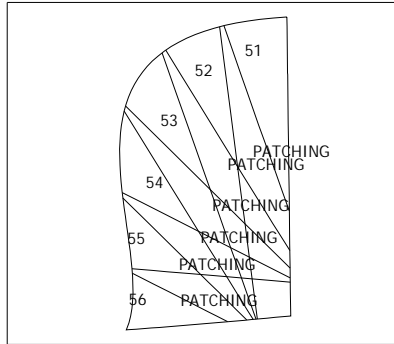
P9



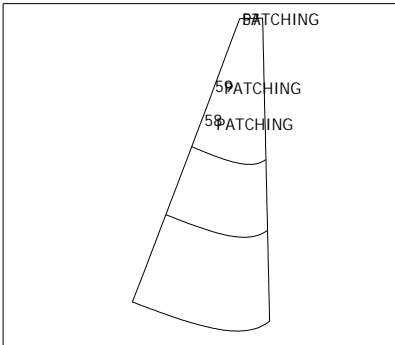
P10



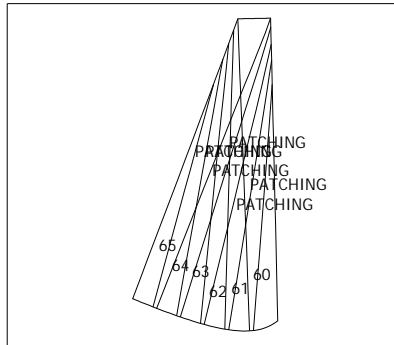
P11



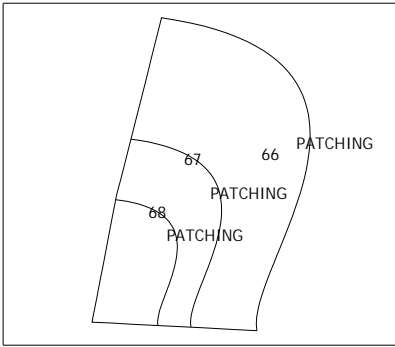
P12



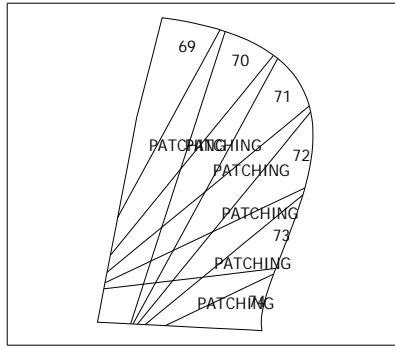
P13



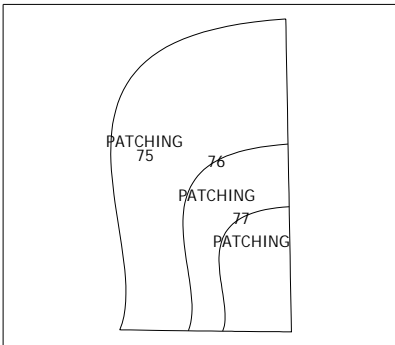
P14



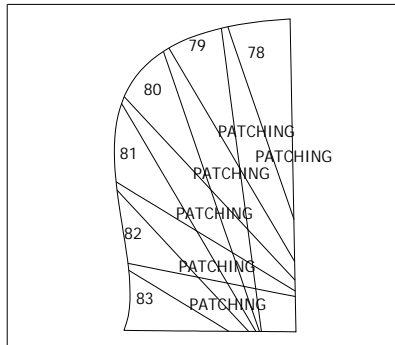
P15



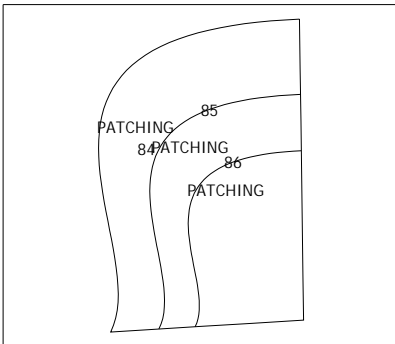
P16



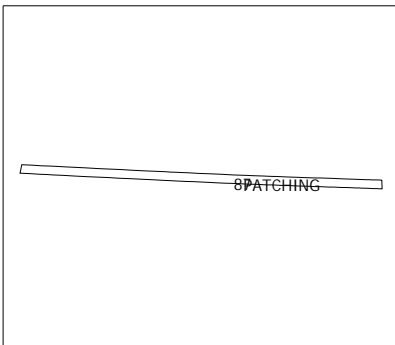
P17



P18



P19



P20 - (87)



Date: 2021-05-31
Designer: Graeme
Company: Precision Sails
Filename: 50111.M.Rev1.pak

Sail: Mainsail
Boat: S2 10.3
Customer:
Order Ref.: 50111

Measurement Check List

Measurement rules Ref.: Mainsail Dimensions

[Head to Tack (Luff)] = 11.836 m [Head to Clew (Leech)] = 12.292 m [Tack to Clew (Foot)] = 3.760 m
[Sailcloth Head Width] = 0.127 m Sail-area = 26.884 m² Aspect Ratio = 3.15 [7/8 Height Width (MGT)] = 0.717 m [3/4 Height Width (MGU)] = 1.309 m [1/2 Height Width (MGM)] = 2.375 m [1/4 Height Width (MGL)] = 3.213 m

Angles (Flat on the floor) Clew: 85.75 ° Tack: 94.56 ° Head Fwd : 91.46 ° Head Aft : 113.90 °

Roach (After broadseaming)

	1/8	2/8	3/8	4/8	5/8	6/8	7/8
Luff	-3.3 mm	-0.4 mm	1.9 mm	2.6 mm	1.8 mm	-0.5 mm	-1.6 mm
Leech	121.8 mm	214.4 mm	266.8 mm	277.4 mm	247.4 mm	184.9 mm	99.8 mm

Reef, Battens, Shape stripes

	Luff (m) (ref: tack)	Leech (m) (ref: clew)	Length (m)	Width (m)
Reef	1.775	1.864	3.454	
Batten	9.445	9.813	1.104	0.025
Batten	7.047	7.360	2.005	0.025
Batten	4.626	4.906	1.111	0.025
Batten	2.261	2.453	1.277	0.025
Shape Stripe	5.971	6.134	2.378	0.025
Shape Stripe	8.481	8.742	1.486	0.025

Area & Weight

Sail area: 26.88 m² Material area: 41.67 m² Material weight: ??? Total weight: ???

Materials

Material's ID	Material's ref. (&color)	Area (m ²)	Mass (gr)	Panels
PATCHING	Patching	13.132		39-87
SAILCLOTH	Contender ZP19	28.534		1-38

Seam width

Seam width (mm)	Zones; Total length (m)
25.0	Zone-seams: 1...2; 5...7; TOTAL: 13.0m
15.0	Zones: Z1...Z8; Zone-seams: 3...4; TOTAL: 90.5m

Sail outline finishings

Hemmings: None

Outline drawings: None

Notes

