

Mainsail: 6000913-V1-0930.des

Design Info
=====

Design File:
F:\Dropbox\Dropbox\Fareast Sails\2022 Order\Need confirm order\6000913 Gary\6000913-V1-0930.des

Initial Design Date: 28/9/2022
Boat:

Comments:

Client:

Design Data
=====

Main

Measurements

Luff geodesic:	10.500m
Leech geodesic:	11.058m
Foot geodesic:	3.770m
Head geodesic:	0.115m
Upper width (MUW):	0.714m
Three-quarter width (MTW):	1.318m
Half width (MHW):	2.336m
Quarter width (MQW):	3.110m
Foot median:	10.684m
ORC Mainsail area:	22.849m?
Surface area:	23.300m?
Clew height:	0.100m
Mast rake:	0.000m

Battens

Position	Length	Roach	Angle	Luff	Leech	Full
83.333%	0.967m	0.179m	72.193?	8.745m	9.183m	Full
66.667%	1.760m	0.300m	72.193?	6.996m	7.346m	Full
50.000%	2.371m	0.278m	72.193?	5.246m	5.510m	Full
33.333%	2.893m	0.213m	72.193?	3.497m	3.673m	Full
16.667%	3.349m	0.115m	72.193?	1.749m	1.837m	Full

Reefing Points

1, Luff: 2.000m ; Leech: 2.075m ; Offset: 0.000m ; Number Eyelets: 3
 2, Luff: 4.000m ; Leech: 4.152m ; Offset: 0.000m ; Number Eyelets: 2

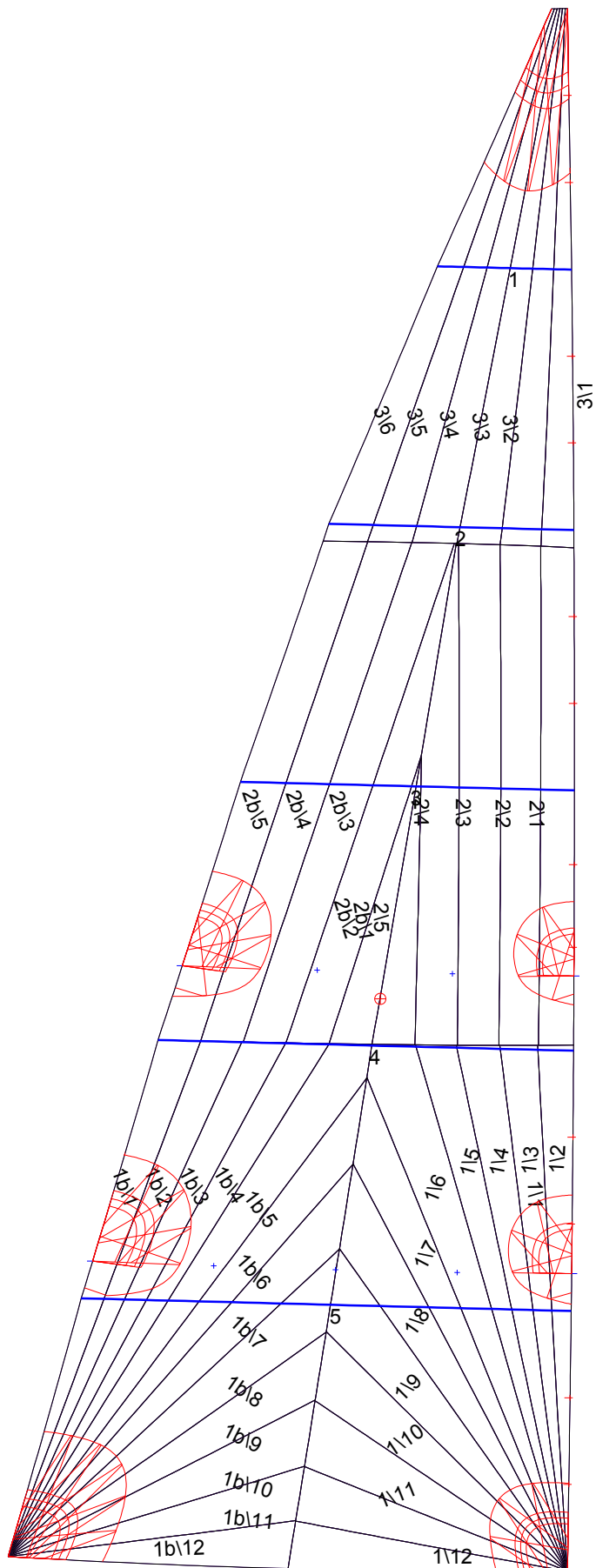
Luff Slides

1, Position: 0.583m
 2, Position: 1.166m
 3, Position: 2.333m
 4, Position: 2.916m
 5, Position: 4.192m
 6, Position: 4.747m
 7, Position: 5.832m
 8, Position: 6.415m
 9, Position: 7.581m
 10, Position: 8.164m
 11, Position: 9.332m
 12, Position: 9.916m

Luff Curve

		Fanned Luff (@ 5.00% [0.188m])	Before BSeam
10.500m,	0.000m	100% (10.500m) :	0.000m
9.191m,	-0.022m	90% (9.450m) :	0.038m
7.875m,	-0.037m	80% (8.400m) :	0.075m
6.555m,	-0.045m	70% (7.350m) :	0.104m
5.250m,	-0.047m	60% (6.300m) :	0.120m
3.912m,	-0.043m	50% (5.250m) :	0.122m
2.625m,	-0.034m	40% (4.200m) :	0.111m
1.308m,	-0.020m	30% (3.150m) :	0.090m
0.000m,	0.000m	20% (2.100m) :	0.062m
		10% (1.050m) :	0.030m
		0% (0.000m) :	0.000m

Mainsail: 6000913-V1-0930.des



Seam Allowances

Zone:	Split	Radial	Cross
Zone: 1/a	0.038m	0.015m	0.038m
Zone: 1/b	0.038m	0.015m	0.038m
Zone: 2/a	0.038m	0.015m	0.038m
Zone: 2/b	0.038m	0.015m	0.038m
Zone: 3	0.038m	0.015m	0.038m

Edge Excesses

Sail:	Luff	Leech	Foot
	0.000m	0.000m	0.000m

Total Seam Lengths (m)

Horizontal	4.69
Radial/Vertical	110.97
Bi-Radial Split	7.32

Materials

Material	Area (m ²)	Panels
Material 1	23.34	1\1,1\2,1\3,1\4,1\5 1\6,1\7,1\8,1\9,1\10 1\11,1\12,1b\1,1b\2,1b\3 1b\4,1b\5,1b\6,1b\7,1b\8 1b\9,1b\10,1b\11,1b\12,2\1 2\2,2\3,2\4,2\5,2b\1 2b\2,2b\3,2b\4,2b\5,3\1 3\2,3\3,3\4,3\5,3\6