

# Genoa: 6000814.des

Design Info  
=====

Design File:  
F:\Dropbox\Dropbox\Fareast Sails\2022 Order\Need confirm order\6000814 Lasse\6000814.des

Initial Design Date: 31/8/2022  
Boat:

Comments:

Client:

Design Data  
=====

Genoa

## Measurements

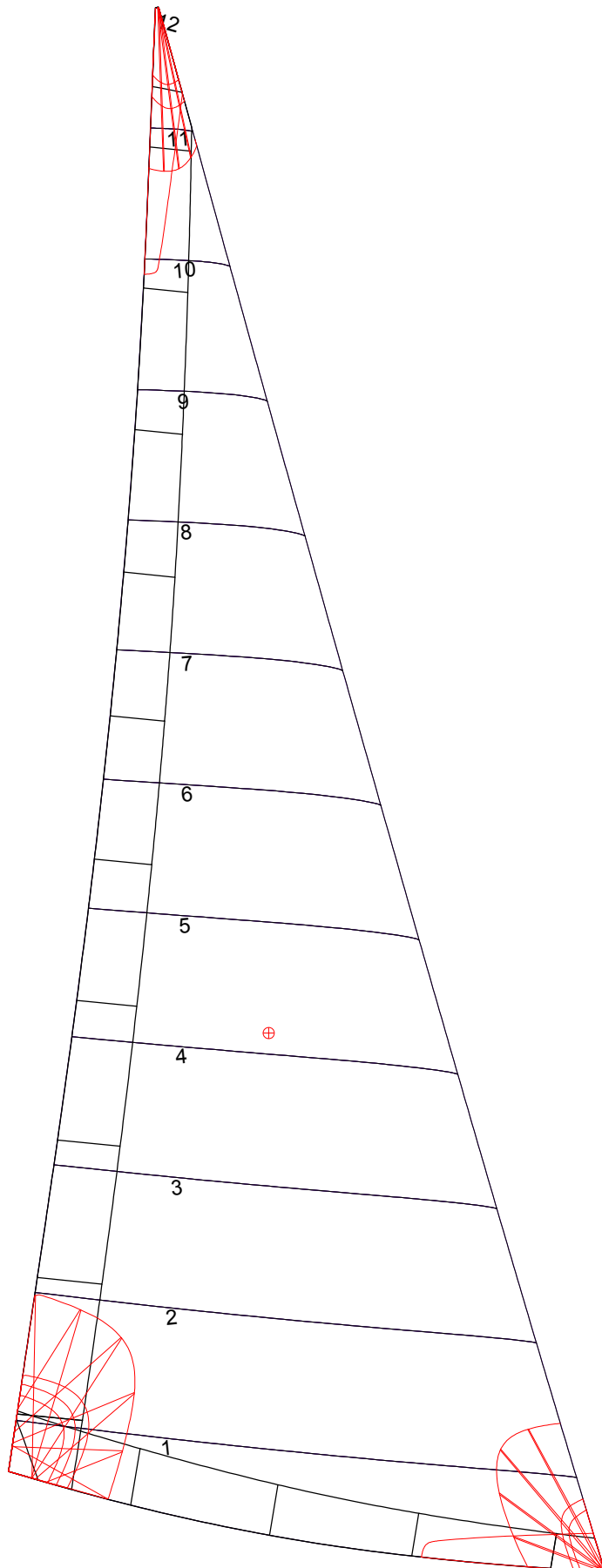
Luff geodesic: 16.335m  
Leech geodesic: 14.850m  
Foot geodesic: 6.150m  
Headboard width: 0.035m  
Luff perpendicular (HLP): 5.616m  
Upper width (HUW): 0.655m  
Three-quarter width (HTW): 1.295m  
Half width (HHW): 2.672m  
Quarter width (HQW): 4.130m  
Foot median: 15.530m  
ORC Headsail area: 44.686m?  
IRC Headsail area: 44.603m?  
Surface area: 45.206m?  
Forestay height: 17.230m  
J: 4.910m

## Luff Curve

16.333m, 0.000m  
12.250m, 0.070m  
8.168m, 0.093m  
4.083m, 0.070m  
0.000m, 0.000m

| Fanned Luff (@ 5.00% [0.299m]) |         | Before BSeam |
|--------------------------------|---------|--------------|
| 100% (16.333m) :               | 0.000m  | 0.000m       |
| 90% (14.700m) :                | -0.031m | 0.014m       |
| 80% (13.067m) :                | -0.060m | 0.030m       |
| 70% (11.434m) :                | -0.081m | 0.046m       |
| 60% (9.800m) :                 | -0.094m | 0.059m       |
| 50% (8.167m) :                 | -0.099m | 0.065m       |
| 40% (6.533m) :                 | -0.096m | 0.063m       |
| 30% (4.900m) :                 | -0.085m | 0.055m       |
| 20% (3.267m) :                 | -0.065m | 0.039m       |
| 10% (1.632m) :                 | -0.035m | 0.019m       |
| 0% (0.000m) :                  | 0.000m  | 0.000m       |

# Genoa: 6000814.des



## Seam Allowances

| Zone:   | Split  | Radial | Cross  |
|---------|--------|--------|--------|
| Zone: 1 | 0.000m | 0.000m | 0.025m |
| Cover 1 | 0.025m | 0.025m | 0.025m |
| Cover 2 | 0.025m | 0.025m | 0.025m |
| Cover 3 | 0.025m | 0.025m | 0.025m |
| Cover 4 | 0.025m | 0.025m | 0.025m |

## Edge Excesses

| Sail:   | Luff   | Leech  | Foot   |
|---------|--------|--------|--------|
| Sail:   | 0.000m | 0.000m | 0.000m |
| Cover 0 | 0.070m | 0.100m | 0.070m |
| Cover 1 | 0.070m | 0.100m | 0.070m |
| Cover 2 | 0.070m | 0.100m | 0.070m |
| Cover 3 | 0.070m | 0.100m | 0.070m |

## Total Seam Lengths (m)

|                 |       |
|-----------------|-------|
| Horizontal      | 33.50 |
| Radial/Vertical | 0.00  |
| Bi-Radial Split | 0.00  |

## Materials

| Material   | Area (m <sup>2</sup> ) | Panels                           |
|------------|------------------------|----------------------------------|
| Material 1 | 45.32                  | 1,2,3,4,5<br>6,7,8,9,10<br>11,12 |