

# Genoa: 6000321 Holger.des

Design Info  
=====

Design File:  
E:\Dropbox\Fareast Sails\2022 Order\6000321 Holger\6000321 Holger.des

Initial Design Date: 25/3/2022  
Boat:

Comments:

Client:

Design Data  
=====

Genoa

## Measurements

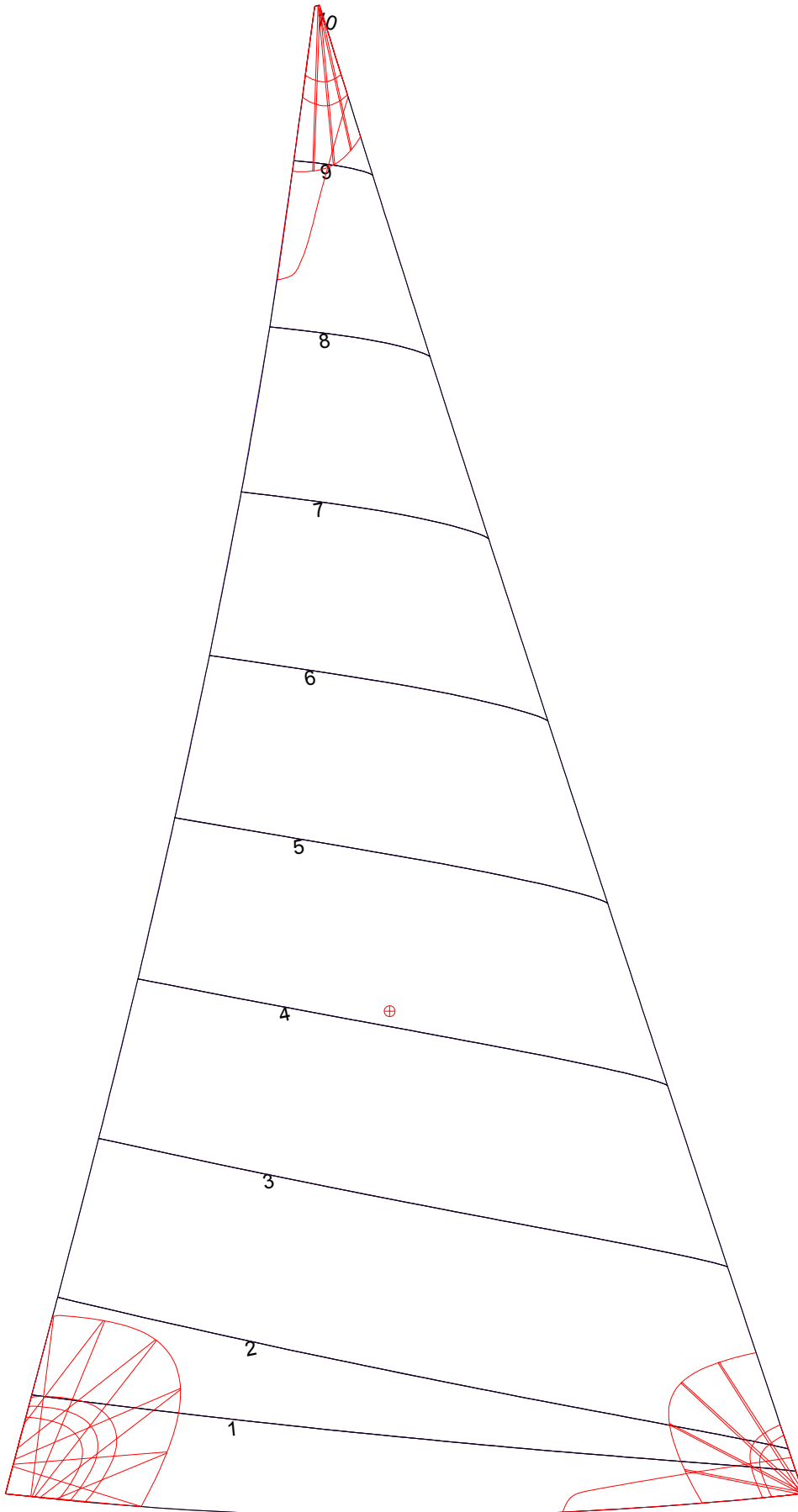
Luff geodesic:	12.094m
Leech geodesic:	11.835m
Foot geodesic:	6.248m
Headboard width:	0.040m
Luff perpendicular (HLP):	6.010m
Upper width (HUW):	0.716m
Three-quarter width (HTW):	1.420m
Half width (HHW):	2.925m
Quarter width (HQW):	4.469m
Foot median:	11.764m
ORC Headsail area:	35.808m?
IRC Headsail area:	35.739m?
Surface area:	36.194m?
Forestay height:	12.192m
J:	3.962m

## Luff Curve

12.093m,	0.000m
9.372m,	0.052m
6.651m,	0.063m
3.326m,	0.039m
0.000m,	0.000m

Fanned Luff (@ 5.00% [0.308m])		Before BSeam
100% (12.093m) :	-0.000m	0.000m
90% (10.883m) :	-0.024m	0.018m
80% (9.675m) :	-0.046m	0.037m
70% (8.465m) :	-0.059m	0.059m
60% (7.256m) :	-0.063m	0.079m
50% (6.047m) :	-0.061m	0.090m
40% (4.837m) :	-0.054m	0.090m
30% (3.628m) :	-0.045m	0.081m
20% (2.419m) :	-0.033m	0.060m
10% (1.208m) :	-0.018m	0.029m
0% (0.000m) :	0.000m	0.000m

# Genoa: 6000321 Holger.des



Seam Allowances			
Zone: 1	Split	Radial	Cross
	0.000m	0.000m	0.035m

Edge Excesses			
Sail:	Luff	Leech	Foot
	0.000m	0.000m	0.000m

### Total Seam Lengths (m)

Horizontal	31.91
Radial/Vertical	0.00
Bi-Radial Split	0.00

### Materials

Material	Area (m <sup>2</sup> )	Panels
Material 1	36.28	1,2,3,4,5 6,7,8,9,10