

Mainsail: 6000308 Francois-Main.des

Design Info
=====

Design File:
E:\Dropbox\Fareast Sails\2022 Order\6000308 Francois Jeanneau gin fizz 37\6000308 Francois-Main.des

Initial Design Date: 18/3/2022
Boat:

Comments:

Client:

Design Data
=====

Main

Measurements

Luff geodesic:	13.000m
Leech geodesic:	13.533m
Foot geodesic:	4.108m
Head geodesic:	0.115m
Upper width (MUW):	0.781m
Three-quarter width (MTW):	1.440m
Half width (MHW):	2.556m
Quarter width (MQW):	3.401m
Foot median:	13.226m
ORC Mainsail area:	30.907m?
Surface area:	31.544m?
Clew height:	0.100m
Mast rake:	0.000m

Battens

Position	Length	Roach	Angle	Luff	Leech	Full
80.000%	1.234m	0.244m	74.341?	10.395m	10.793m	Full
60.000%	2.198m	0.330m	74.341?	7.796m	8.095m	Full
40.000%	2.946m	0.275m	74.341?	5.197m	5.396m	Full
20.000%	3.560m	0.151m	74.341?	2.598m	2.698m	Full

Reefing Points

1, Luff: 1.949m ; Leech: 2.007m ; Offset: 0.000m ; Number Eyelets: 3
2, Luff: 3.899m ; Leech: 4.014m ; Offset: 0.000m ; Number Eyelets: 3
3, Luff: 5.848m ; Leech: 6.022m ; Offset: 0.000m ; Number Eyelets: 2

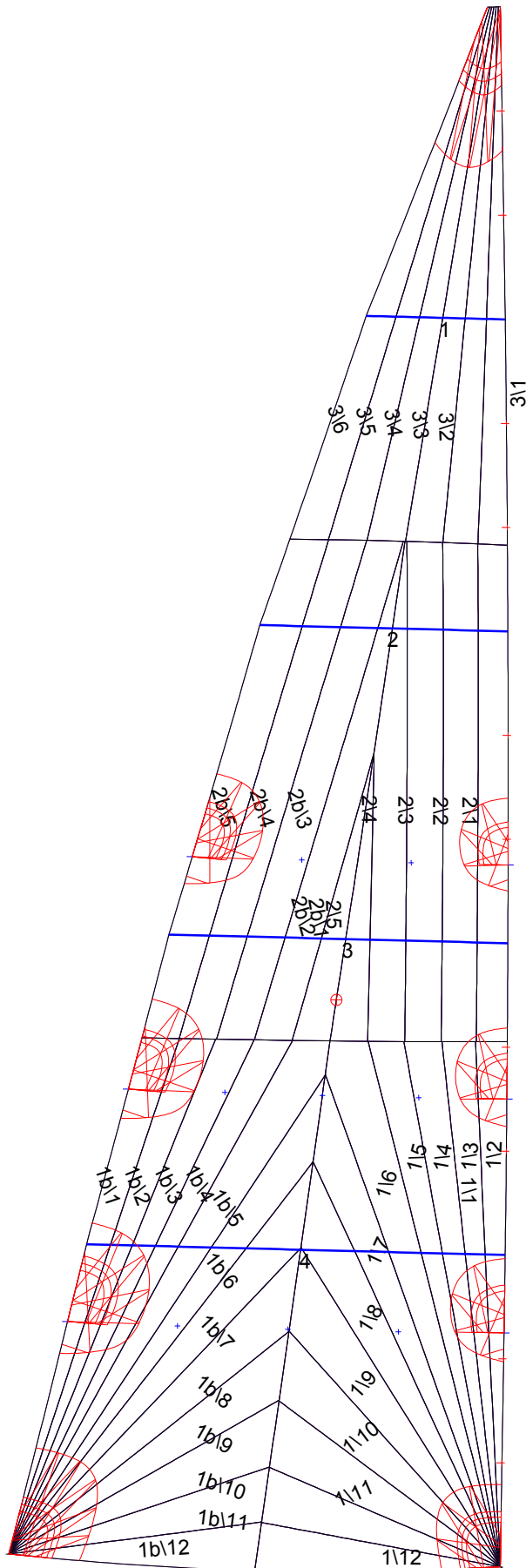
Luff Slides

1, Position: 0.866m
2, Position: 1.732m
3, Position: 3.464m
4, Position: 4.330m
5, Position: 6.063m
6, Position: 6.929m
7, Position: 8.662m
8, Position: 9.529m
9, Position: 11.263m
10, Position: 12.132m

Luff Curve

		Fanned Luff (@ 5.00% [0.205m])	Before BSeam
12.999m,	0.000m	100% (13.000m) :	0.000m
9.750m,	-0.049m	90% (11.700m) :	0.015m
6.500m,	-0.065m	80% (10.400m) :	0.030m
3.250m,	-0.049m	70% (9.100m) :	0.041m
0.000m,	0.000m	60% (7.800m) :	0.048m
		50% (6.500m) :	0.049m
		40% (5.200m) :	0.046m
		30% (3.900m) :	0.040m
		20% (2.600m) :	0.029m
		10% (1.300m) :	0.014m
		0% (0.000m) :	0.000m

Mainsail: 6000308 Francois-Main.des



Seam Allowances			
	Split	Radial	Cross
Zone: 1/a	0.038m	0.015m	0.038m
Zone: 1/b	0.038m	0.015m	0.038m
Zone: 2/a	0.038m	0.015m	0.038m
Zone: 2/b	0.038m	0.015m	0.038m
Zone: 3	0.038m	0.015m	0.038m

Edge Excesses			
Sail:	Luff	Leech	Foot
	0.000m	0.000m	0.000m

Total Seam Lengths (m)

Horizontal	5.09
Radial/Vertical	133.35
Bi-Radial Split	9.03

Materials

Material	Area (m ²)	Panels
Material 1	31.59	1\1,1\2,1\3,1\4,1\5 1\6,1\7,1\8,1\9,1\10 1\11,1\12,1b\1,1b\2,1b\3 1b\4,1b\5,1b\6,1b\7,1b\8 1b\9,1b\10,1b\11,1b\12,2\1 2\2,2\3,2\4,2\5,2b\1 2b\2,2b\3,2b\4,2b\5,3\1 3\2,3\3,3\4,3\5,3\6