

# Genoa: 6000308 Francois-Head-V1.des

Design Info  
=====

Design File:  
F:\Dropbox\Dropbox\Fareast Sails\2022 Order\6000308 Francois Jeanneau gin fizz 37\6000308 Francois-Head-V1.des

Initial Design Date: 18/3/2022  
Boat:

Comments:

Client:

Design Data  
=====

Genoa

## Measurements

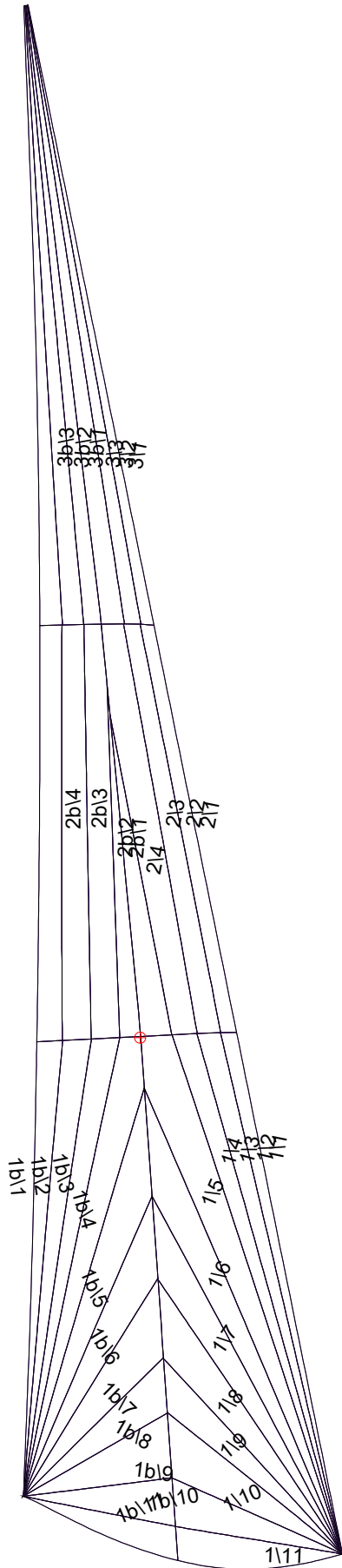
|                            |          |
|----------------------------|----------|
| Luff geodesic:             | 13.640m  |
| Leech geodesic:            | 12.881m  |
| Foot geodesic:             | 2.841m   |
| Headboard width:           | 0.040m   |
| Luff perpendicular (HLP):  | 2.660m   |
| Upper width (HUW):         | 0.328m   |
| Three-quarter width (HTW): | 0.627m   |
| Half width (HHW):          | 1.277m   |
| Quarter width (HQW):       | 1.955m   |
| Foot median:               | 13.494m  |
| ORC Headsail area:         | 17.765m? |
| IRC Headsail area:         | 17.767m? |
| Surface area:              | 18.239m? |
| Forestay height:           | 13.780m  |
| J:                         | 2.800m   |

## Luff Curve

|          |        |
|----------|--------|
| 13.640m, | 0.000m |
| 10.230m, | 0.000m |
| 6.820m,  | 0.000m |
| 3.410m,  | 0.000m |
| 0.000m,  | 0.000m |

| Fanned Luff (@ 5.00% [0.138m]) |         | Before BSeam |
|--------------------------------|---------|--------------|
| 100% (13.640m) :               | 0.000m  | 0.000m       |
| 90% (12.276m) :                | 0.000m  | 0.016m       |
| 80% (10.912m) :                | 0.001m  | 0.032m       |
| 70% (9.548m) :                 | 0.001m  | 0.045m       |
| 60% (8.184m) :                 | 0.001m  | 0.055m       |
| 50% (6.820m) :                 | -0.000m | 0.059m       |
| 40% (5.456m) :                 | -0.001m | 0.057m       |
| 30% (4.092m) :                 | -0.002m | 0.050m       |
| 20% (2.728m) :                 | -0.003m | 0.038m       |
| 10% (1.364m) :                 | -0.002m | 0.020m       |
| 0% (0.000m) :                  | -0.000m | 0.000m       |

# Genoa: 6000308 Francois-Head-V1.des



## Seam Allowances

| Zone:     | Split  | Radial | Cross  |
|-----------|--------|--------|--------|
| Zone: 1/a | 0.038m | 0.015m | 0.038m |
| Zone: 1/b | 0.038m | 0.015m | 0.038m |
| Zone: 2/a | 0.038m | 0.015m | 0.038m |
| Zone: 2/b | 0.038m | 0.015m | 0.038m |
| Zone: 3/a | 0.038m | 0.015m | 0.038m |
| Zone: 3/b | 0.038m | 0.015m | 0.038m |

## Edge Excesses

| Sail: | Luff   | Leech  | Foot   |
|-------|--------|--------|--------|
|       | 0.000m | 0.000m | 0.000m |

## Total Seam Lengths (m)

|                 |        |
|-----------------|--------|
| Horizontal      | 2.90   |
| Radial/Vertical | 100.97 |
| Bi-Radial Split | 13.91  |

## Materials

| Material   | Area (m <sup>2</sup> ) | Panels   |
|------------|------------------------|--|
| Material 1 | 18.29                  | 1\1, 1\2, 1\3, 1\4, 1\5<br>1\6, 1\7, 1\8, 1\9, 1\10<br>1\11, 1b\1, 1b\2, 1b\3, 1b\4<br>1b\5, 1b\6, 1b\7, 1b\8, 1b\9<br>1b\10, 1b\11, 2\1, 2\2, 2\3<br>2\4, 2b\1, 2b\2, 2b\3, 2b\4<br>3\1, 3\2, 3\3, 3b\1, 3b\2<br>3b\3 |