

# Genoa: 6000308 Francois-Head.des

Design Info  
=====

Design File:  
D:\dropbox\Dropbox\Dropbox\Fareast Sails\2022 Order\6000308 Francois Jeanneau gin fizz 37\6000308 Francois-Head

Initial Design Date: 18/3/2022  
Boat:

Comments:

Client:

Design Data  
=====

## Genoa

### Measurements

Luff geodesic: 13.640m  
 Leech geodesic: 12.881m  
 Foot geodesic: 2.840m  
 Headboard width: 0.040m  
 Luff perpendicular (HLP): 2.660m  
 Upper width (HUW): 0.420m  
 Three-quarter width (HTW): 0.786m  
 Half width (HHW): 1.407m  
 Quarter width (HQW): 2.042m  
 Foot median: 13.496m  
 ORC Headsail area: 18.936m?  
 IRC Headsail area: 18.995m?  
 Surface area: 19.553m?  
 Forestay height: 13.780m  
 J: 2.800m

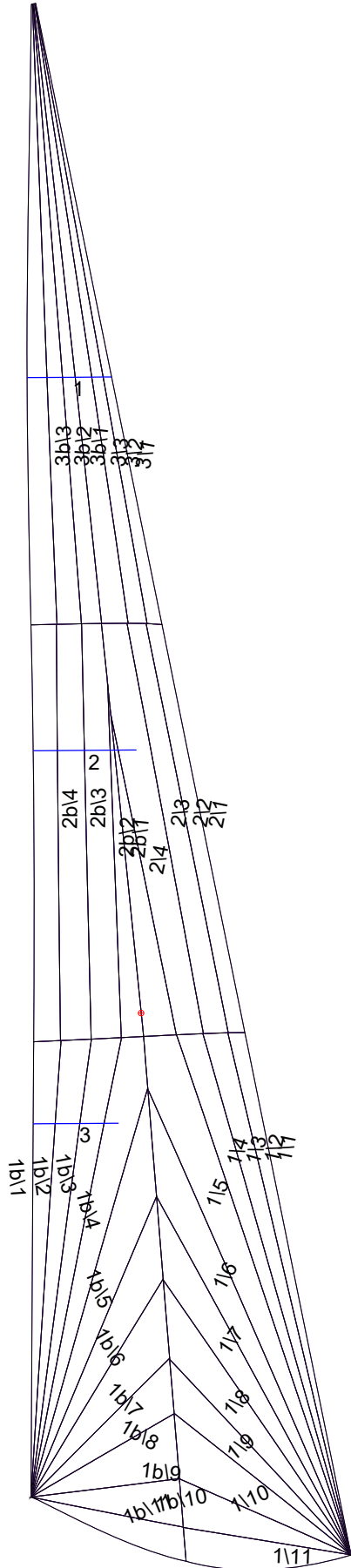
### Battens

Position	Length	Roach	Angle	Luff	Leech	Full
75.000%	0.802m	0.062m	89.633?	10.356m	9.650m	Full
50.000%	0.900m	0.002m	89.633?	7.080m	6.433m	
25.000%	0.750m	-0.010m	89.633?	3.804m	3.217m	

### Luff Curve

		Fanned Luff (@ 5.00% [0.138m])	Before BSeam
13.640m,	0.000m	100% (13.640m) :	0.000m 0.000m
10.230m,	0.000m	90% (12.276m) :	0.001m 0.020m
6.820m,	0.000m	80% (10.912m) :	0.001m 0.039m
3.410m,	0.000m	70% (9.548m) :	0.002m 0.054m
0.000m,	0.000m	60% (8.184m) :	0.001m 0.062m
		50% (6.820m) :	0.001m 0.064m
		40% (5.456m) :	-0.000m 0.060m
		30% (4.092m) :	-0.001m 0.052m
		20% (2.728m) :	-0.001m 0.039m
		10% (1.364m) :	-0.002m 0.020m
		0% (0.000m) :	-0.000m 0.000m

# Genoa: 6000308 Francois-Head.des



## Seam Allowances

	Split	Radial	Cross
Zone: 1/a	0.038m	0.015m	0.038m
Zone: 1/b	0.038m	0.015m	0.038m
Zone: 2/a	0.038m	0.015m	0.038m
Zone: 2/b	0.038m	0.015m	0.038m
Zone: 3/a	0.038m	0.015m	0.038m
Zone: 3/b	0.038m	0.015m	0.038m

## Edge Excesses

	Luff	Leech	Foot
Sail:	0.000m	0.000m	0.000m

## Total Seam Lengths (m)

Horizontal	3.15
Radial/Vertical	100.97
Bi-Radial Split	13.91

## Materials

Material	Area (m <sup>2</sup> )	Panels
Material 1	19.61	1\1,1\2,1\3,1\4,1\5 1\6,1\7,1\8,1\9,1\10 1\11,1b\1,1b\2,1b\3,1b\4 1b\5,1b\6,1b\7,1b\8,1b\9 1b\10,1b\11,2\1,2\2,2\3 2\4,2b\1,2b\2,2b\3,2b\4 3\1,3\2,3\3,3b\1,3b\2 3b\3