

Mainsail: 6000301 Erkki-v2

Design Info

=====

Design File:

E:\dropbox\Dropbox\Fareast Sails\2022 Order\6000301 Erkki\6000301 Erkki-v2.des

Initial Design Date: 5/3/2022

Boat:

Comments:

Client:

Design Data

=====

Main

Measurements

Luff geodesic:	12.530m
Leech geodesic:	12.730m
Foot geodesic:	3.650m
Head geodesic:	0.115m
Upper width (MUW):	0.717m
Three-quarter width (MTW):	1.318m
Half width (MHW):	2.347m
Quarter width (MQW):	3.096m
Foot median:	12.597m
ORC Mainsail area:	27.075m?
Surface area:	27.565m?
Clew height:	0.209m
Mast rake:	0.428m

Battens

Position	Length	Roach	Angle	Luff	Leech	Full
80.000%	1.128m	0.238m	79.173?	10.012m	10.153m	Full
60.000%	2.025m	0.356m	79.173?	7.507m	7.615m	Full
40.000%	2.709m	0.327m	79.173?	5.004m	5.076m	Full
20.000%	3.239m	0.205m	79.173?	2.501m	2.538m	Full

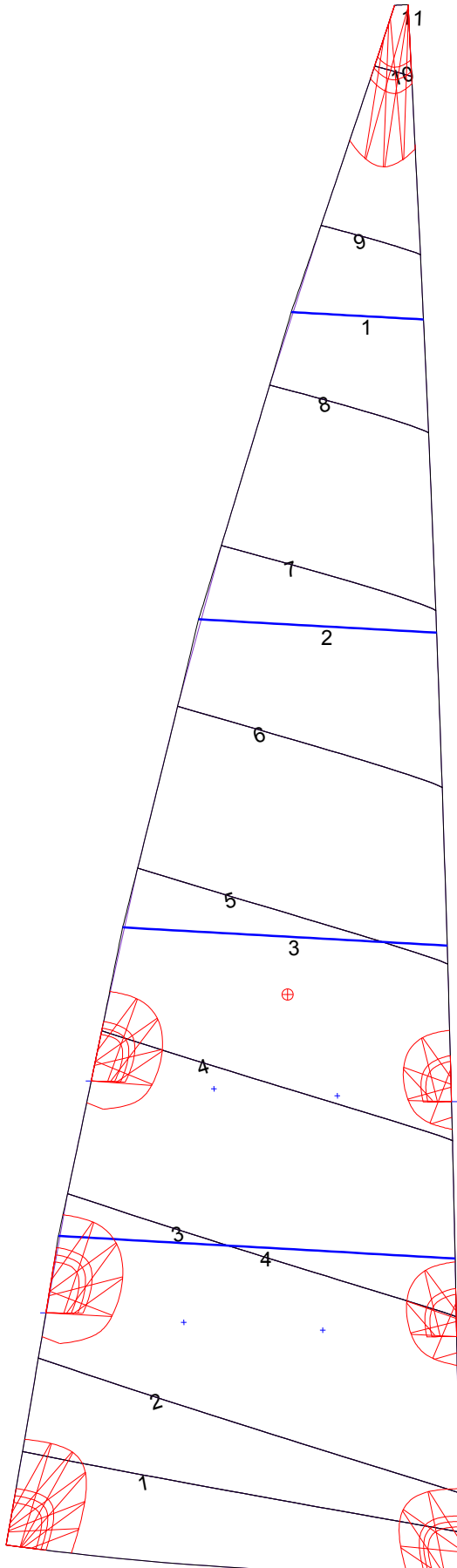
Reefing Points

1, Luff: 1.877m ; Leech: 1.891m ; Offset: 0.000m ; Number Eyelets: 2
 2, Luff: 3.755m ; Leech: 3.784m ; Offset: 0.000m ; Number Eyelets: 2

Luff Curve

		Fanned Luff (@ 5.00% [0.182m])	Before BSeam
12.530m,	0.000m	100% (12.530m) :	0.000m
9.397m,	-0.045m	90% (11.277m) :	0.014m
6.265m,	-0.061m	80% (10.024m) :	0.074m
3.132m,	-0.045m	70% (8.771m) :	0.106m
0.000m,	0.000m	60% (7.518m) :	0.127m
		50% (6.265m) :	0.131m
		40% (5.012m) :	0.120m
		30% (3.759m) :	0.099m
		20% (2.506m) :	0.068m
		10% (1.253m) :	0.012m
		0% (0.000m) :	0.000m

Mainsail: 6000301 Erkki-v2



Seam Allowances			
Zone: 1	Split	Radial	Cross
	0.000m	0.000m	0.025m

Edge Excesses			
Sail:	Luff	Leech	Foot
	0.000m	0.000m	0.000m

Total Seam Lengths (m)

Horizontal	23.01
Radial/Vertical	0.00
Bi-Radial Split	0.00

Materials

Material	Area (m ²)	Panels
Material 1	27.57	1,2,3,4,5 6,7,8,9,10 11