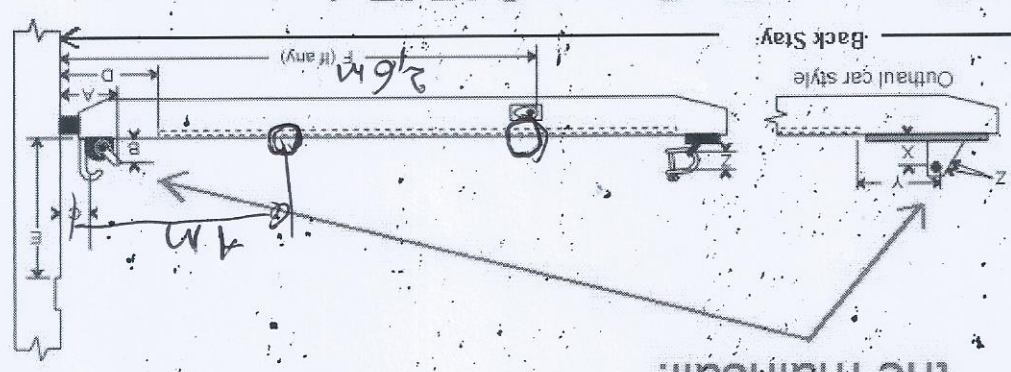


426

These measurements are always taken at the vessel. Never from an old sail. A is distance from center of tack pin to the mast. B is height of tack pin above the boom. B can be 0 if needed. If you have an outhaul car, X is height above boom. If you have metal clew sling that fits in the boom, just tell us so. We don't need X if you have a sling.

These are the bearing points of the mainsail.



Back Stay - Aft face of MAST to backstay at boom level.