

Reefing Ring Types;

All reefs have extra strong patches at the reef tack and reef clew.

You may also say to us;

#1 Reef, D ring at Tack and Press Ring at Clew.
 #2 Reef, Press Ring at Reef Tack and Reef Clew.

M/W

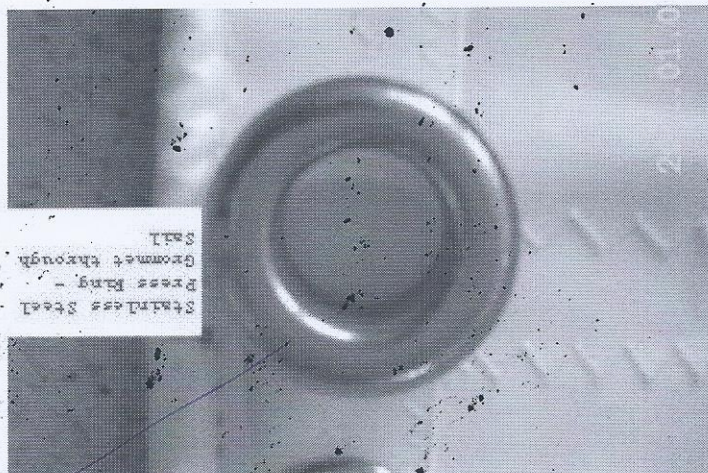
Reefing Ring Types

25mm / 45mm

Grommet Through Sail

35mm Press Ring

Most Common



Normally these are at the reef clew and the reef tack with the downs in between

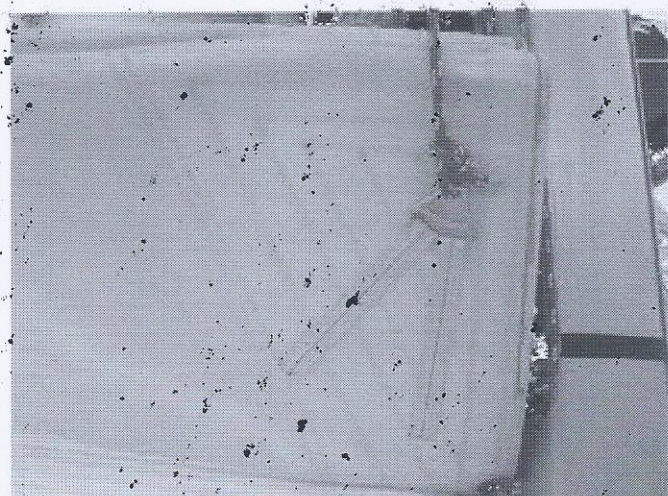
#1

Webbed D-Ring

Please tell us the side of the sail for each Webbed D Ring;

#1 Reef (port or starboard?)
 #2 Reef (port or starboard?)

Normally these are at the reef clew and the reef tack with no tie downs in between



#2

Floppy

#3

