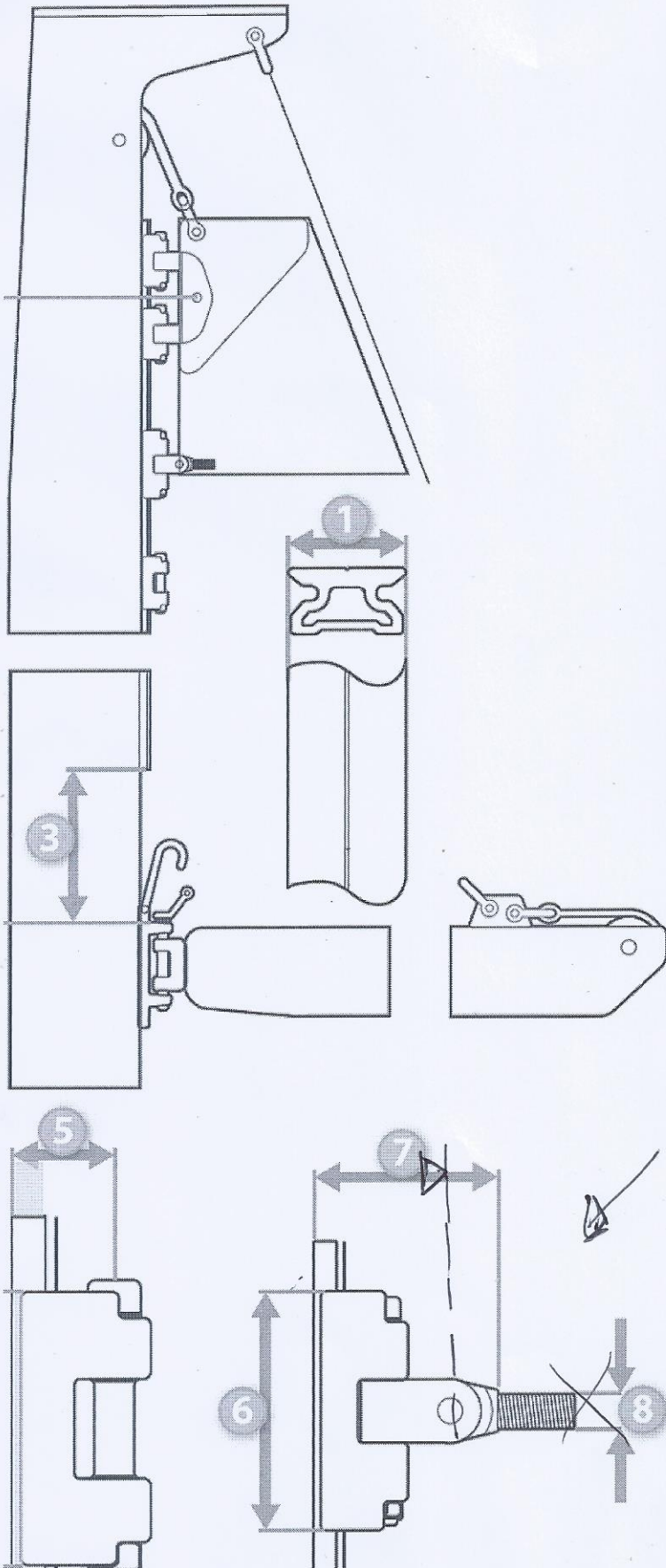


External Track System (if present)



1	Track width (see picture)	
2	Max height of head board car	
3	Bottom of track	
4	Height if intermediate car	
5	Back of mast to centre of pin	25 mm
6	Height of batten car	140 mm
7	Back of mast to thread stop	52 mm
8	Thread diameter	/
9	Height of headboard car	/
10	Back of mast to headboard carriage pin	/
11	Headboard carriage pin diameter	φ 12
12	Width of headboard carriage	12 mm
	Number of intermediate cars	
	Luff attachment intermediate cars	
	Number of full batten cars	
	Luff attachment at full batten cars	

