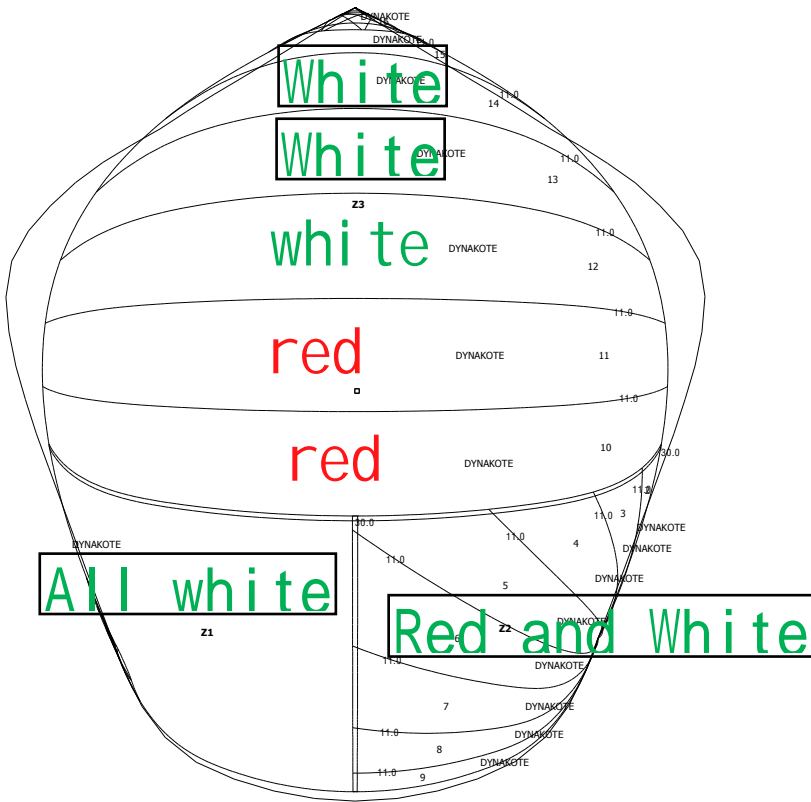
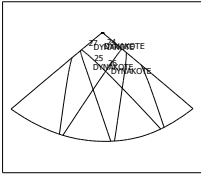


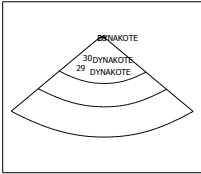
# Panel layout



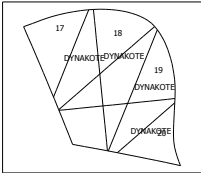
# Patch layout



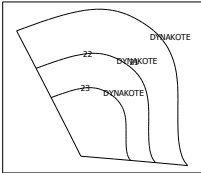
P6



P7



P4



P5

## Measurement Check List

**Measurement rules** Ref.: SPI and ASY\_IMS

[SMW] = 5.119 m [SF] = 4.480 m Area = 25.616 m<sup>2</sup> [Luff] = 5.996 m [Leech] = 5.997 m [SMG] = 4.480 m

**Angles** Clew: 123.35 ° Tack: 123.36 ° Head: 109.47 °

**Roach** (After broadseaming)

	1/8	2/8	3/8	4/8	5/8	6/8	7/8
Luff	0.0	0.0	0.0	0.0	0.0	0.0	0.0
Leech	0.0	0.0	0.0	0.0	0.0	0.0	0.0

**Reef, Battens, Shape stripes**

**Area**

Material area: 28.36 m<sup>2</sup> Sail area (mould): 25.62 m<sup>2</sup>

**Materials**

Material's ID	Material's ref. (&color)	Area (m <sup>2</sup> )	Panels
DYNAKOTE	Default	28.361	1-30

**Seam width**

Seam width (mm)	Zones; Total length (m)
30.0	Zone-seams: 1; 2; TOTAL: 7.8m
11.0	Zones: Z2; Z3; TOTAL: 38.9m

**Sail outline finishings**

Hemmings: (mm) Luff: 40.0 / Leech: 40.0 / Foot: 50.0

Outline drawings: None

**Notes**

**Spinnaker**

Clew radials have wide seams on the hojo and vejo. Fair and trim to 11mm

Leech and foot have hems - fair and trim off.

1 x recovery patch - no patch in the plot files - can you use the same as you did of the RS assy ? With an oval base patch and 12mm X web on the patch.

Tapes - 25mm folded (12.5 when folded) 2oz polyester red on port and blue or green on starboard. White on the foot.

D207 in all corners. With 12mm web mini "strainer loops" through the eyes.

Patching as in the plot files but the coloured BCD goes on the outside one each side.