

Mainsail: Hunter40.5 Class main 4 full battens

Design Info
=====

Design File:
C:\Users\Administrator\Desktop\Hunter40.5 Class main 4 full battens.des

Initial Design Date: 26/3/2008
Boat:
Hunter 40.5
Client:

Comments:

Design Data
=====

Main

Measurements

Luff geodesic:	15.850m
Leech geodesic:	16.507m
Foot geodesic:	5.056m
Head geodesic:	0.137m
Upper width (MUW):	0.931m
Three-quarter width (MTW):	1.711m
Half width (MHW):	3.042m
Quarter width (MQW):	4.125m
Foot median:	16.169m
ORC Mainsail area:	45.476m?
Surface area:	46.365m?

Battens

Position	Length	Roach	Angle	Full
80.000%	1.461m	0.246m	74.181?	Full
60.000%	2.589m	0.311m	74.181?	Full
40.000%	3.528m	0.264m	74.181?	Full
20.000%	4.334m	0.154m	74.181?	Full

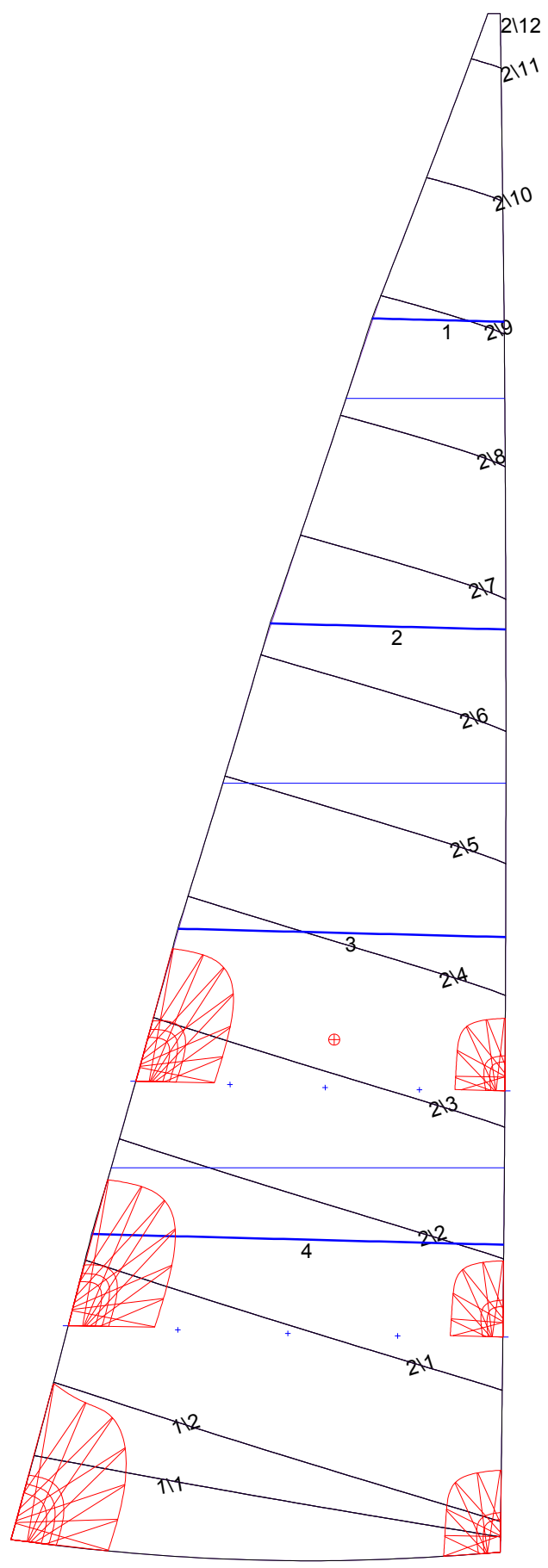
Reefing Points

1, Luff: 2.218m ; Leech: 2.291m ; Offset: 0.000m ; Number Eyelets: 3
2, Luff: 4.754m ; Leech: 4.908m ; Offset: 0.000m ; Number Eyelets: 3

Luff Curve

		Fanned Luff (@ 5.00% [0.:Before BSeam		
15.850m,	0.000m	100% (15.850m) :	0.000m	0.000m
13.875m,	-0.027m	90% (14.265m) :	0.015m	0.049m
11.887m,	-0.047m	80% (12.680m) :	0.030m	0.096m
9.895m,	-0.057m	70% (11.095m) :	0.039m	0.133m
7.925m,	-0.058m	60% (9.510m) :	0.043m	0.153m
5.906m,	-0.054m	50% (7.925m) :	0.044m	0.157m
3.962m,	-0.043m	40% (6.340m) :	0.042m	0.143m
1.975m,	-0.025m	30% (4.755m) :	0.035m	0.117m
0.000m,	0.000m	20% (3.170m) :	0.025m	0.081m
		10% (1.585m) :	0.012m	0.039m
		0% (0.000m) :	0.000m	0.000m

Mainsail: Hunter40.5 Class main 4 full battens



Seam Allowances			
	Split	Radial	Cross
Zone: 1	0.060m	0.060m	0.038m
Zone: 2	0.060m	0.060m	0.038m

Edge Excesses			
Sail:	Luff	Leech	Foot
	0.000m	0.000m	0.000m

Materials		
Material	Area (m²)	Panels
Material 1	46.42	1\1, 1\2, 2\1, 2\2, 2\3 2\4, 2\5, 2\6, 2\7, 2\8 2\9, 2\10, 2\11, 2\12

Mainsail: Hunter40.5 Class main 4 full battens

