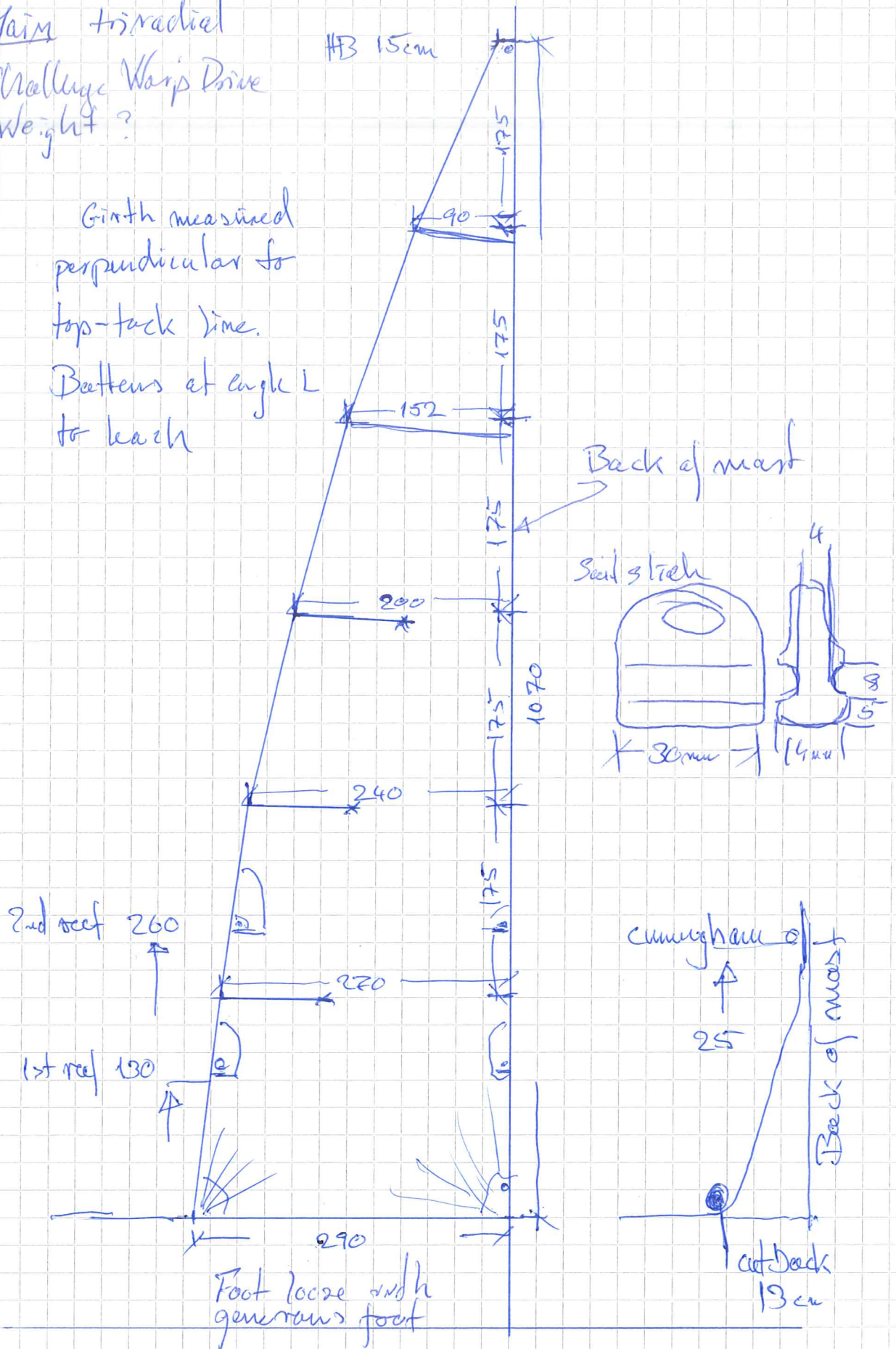
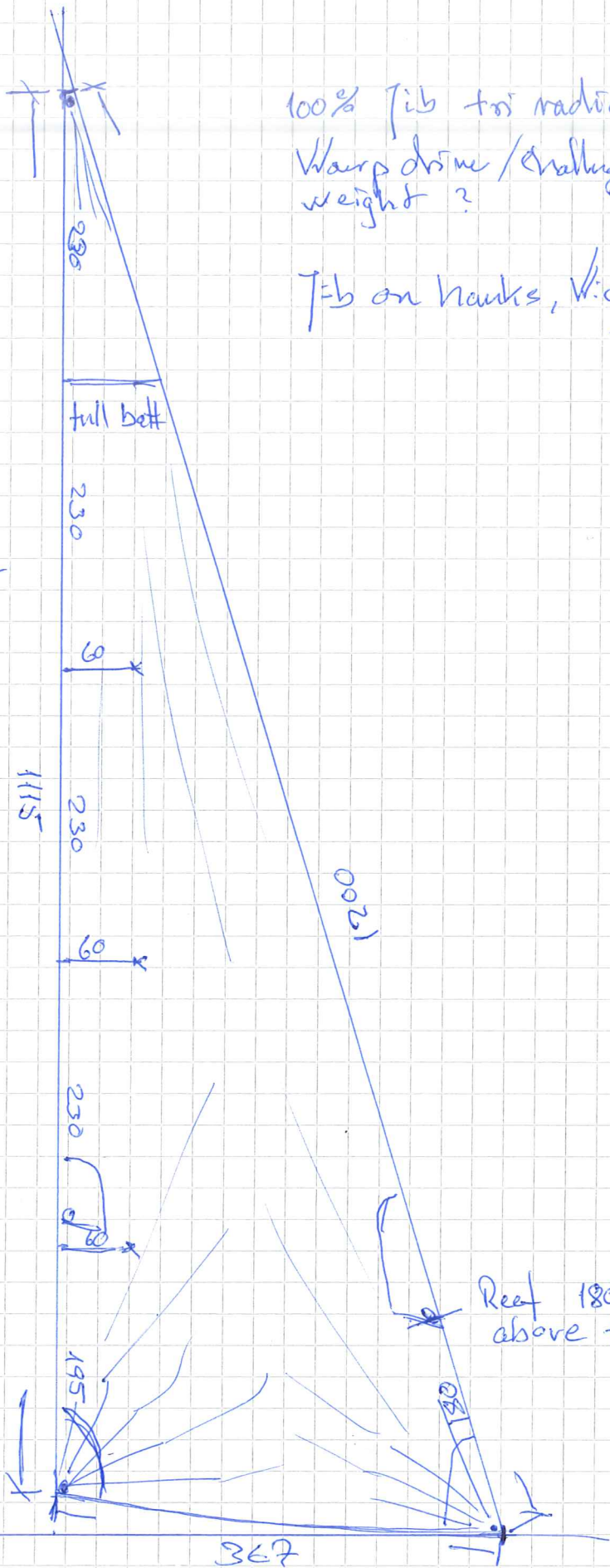


Main triradial
 Challenge Warp Drive
 Weight?

Girth measured
 perpendicular to
 top-tack line.
 Battens at angle L
 to leach



Elvstrom 32 "EA"
 08-03-19 / gms



100% Fib to radial
Warp drive / Challenge
weight ?

Fib on hanks, Richard
type

1 full batt on top
3 battens, lowest
batten under reef
tack

Reef 220
above clew

Reef 180
above tack

Clew

ELWstrom 32 "EA"
08-03-19 / 8VA