

Mainsail: 6000214 Hans christian 43- Robert-v2

Design Info
=====

Design File:
E:\dropbox\Dropbox\Fareast Sails\2022 Order\6000214 Robert\6000214 Hans christian 43- Robert-v2.des

Initial Design Date: 23/2/2022
Boat:

Comments:
batten 2 full + 2 partial.

Client:

Design Data
=====

Main

Measurements

Luff geodesic: 14.020m
Leech geodesic: 14.610m
Foot geodesic: 4.480m
Head geodesic: 0.115m
Upper width (MUW): 0.827m
Three-quarter width (MTW): 1.533m
Half width (MHW): 2.745m
Quarter width (MQW): 3.684m
Foot median: 14.269m
ORC Mainsail area: 35.964m?
Surface area: 36.675m?
Clew height: 0.100m
Mast rake: 0.000m

Battens

Position	Length	Roach	Angle	Luff	Leech	Full
80.000%	1.307m	0.236m	74.118?	11.211m	11.653m	Full
60.000%	2.348m	0.320m	74.118?	8.407m	8.740m	Full
40.000%	1.340m	0.267m	74.118?	5.604m	5.826m	
20.000%	1.117m	0.147m	74.118?	2.802m	2.913m	

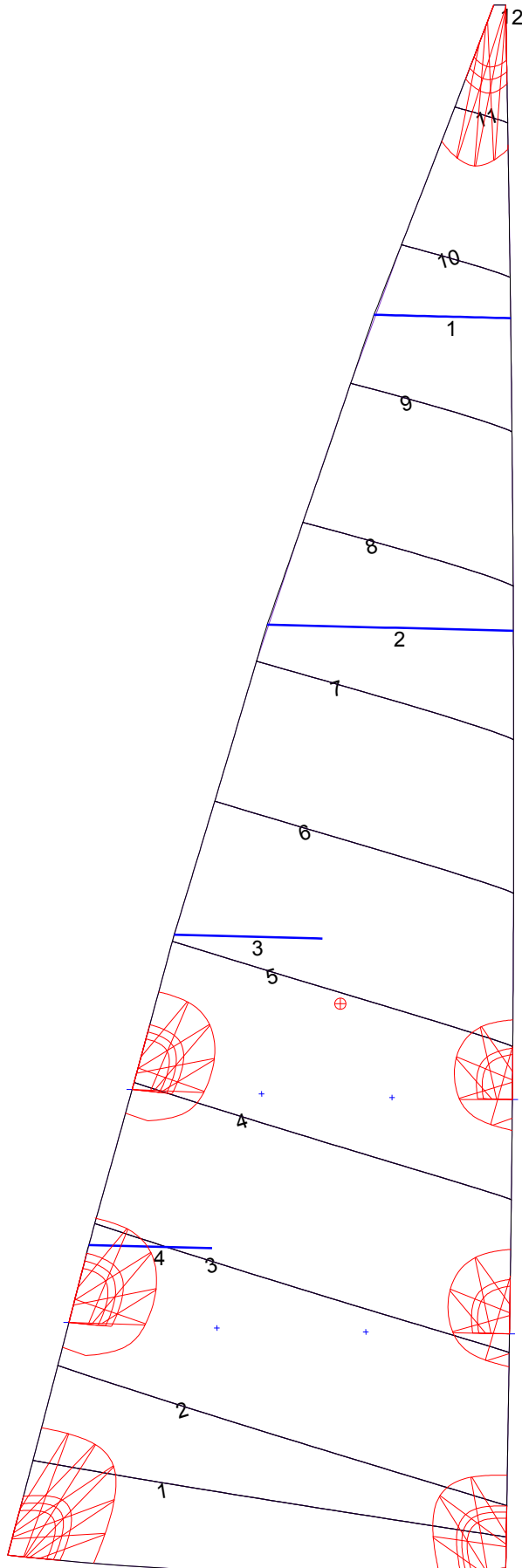
Reefing Points

1, Luff: 2.102m ; Leech: 2.169m ; Offset: 0.000m ; Number Eyelets: 2
2, Luff: 4.205m ; Leech: 4.338m ; Offset: 0.000m ; Number Eyelets: 2

Luff Curve

		Fanned Luff (@ 5.00% [0.223m])	Before BSeam
14.019m,	0.000m	100% (14.020m) :	0.000m
10.515m,	-0.053m	90% (12.618m) :	0.016m
7.010m,	-0.071m	80% (11.216m) :	0.086m
3.505m,	-0.053m	70% (9.814m) :	0.124m
0.000m,	0.000m	60% (8.412m) :	0.148m
		50% (7.010m) :	0.153m
		40% (5.608m) :	0.140m
		30% (4.206m) :	0.116m
		20% (2.804m) :	0.080m
		10% (1.402m) :	0.037m
		0% (0.000m) :	0.000m

Mainsail: 6000214 Hans christian 43- Robert-v2



Seam Allowances			
Zone: 1	Split	Radial	Cross
	0.000m	0.000m	0.025m

Edge Excesses			
Sail:	Luff	Leech	Foot
	0.000m	0.000m	0.000m

Total Seam Lengths (m)

Horizontal	30.26
Radial/Vertical	0.00
Bi-Radial Split	0.00

Materials

Material	Area (m ²)	Panels
Material 1	36.71	1,2,3,4,5 6,7,8,9,10 11,12