

# Mainsail: 7000603 Yoh-1 Yamaha 34S MainsailV1.des

Design Info  
=====

Design File:  
\\NAS\Engineering files\Queenie-Customer Order\Fareast Sails\2023 Order\Need Confrim Order\7000603 Yoh\7000603

Initial Design Date: 8/6/2023  
Boat:

Comments:

Client:

Design Data  
=====

## Main

### Measurements

Luff geodesic: 12.520m  
Leech geodesic: 13.100m  
Foot geodesic: 4.554m  
Head geodesic: 0.115m  
Upper width (MUW): 0.840m  
Three-quarter width (MTW): 1.543m  
Half width (MHW): 2.763m  
Quarter width (MQW): 3.738m  
Foot median: 12.782m  
ORC Mainsail area: 32.501m?  
Surface area: 33.245m?  
Clew height: 0.232m  
Mast rake: 0.000m

### Battens

Position	Length	Roach	Angle	Luff	Leech	Full
82.000%	1.217m	0.213m	73.146?	10.257m	10.706m	Full
62.000%	2.262m	0.287m	73.146?	7.754m	8.094m	Full
41.500%	3.160m	0.265m	73.146?	5.189m	5.418m	Full
21.000%	3.890m	0.153m	73.146?	2.625m	2.742m	Full

### Reefing Points

1, Luff: 1.877m ; Leech: 1.944m ; Offset: 0.000m ; Number Eyelets: 3  
2, Luff: 3.753m ; Leech: 3.886m ; Offset: 0.000m ; Number Eyelets: 3

### Draft Stripes

1, Luff: 3.128m ; Leech: 3.040m ;  
2, Luff: 6.257m ; Leech: 6.339m ;  
3, Luff: 9.387m ; Leech: 9.671m ;

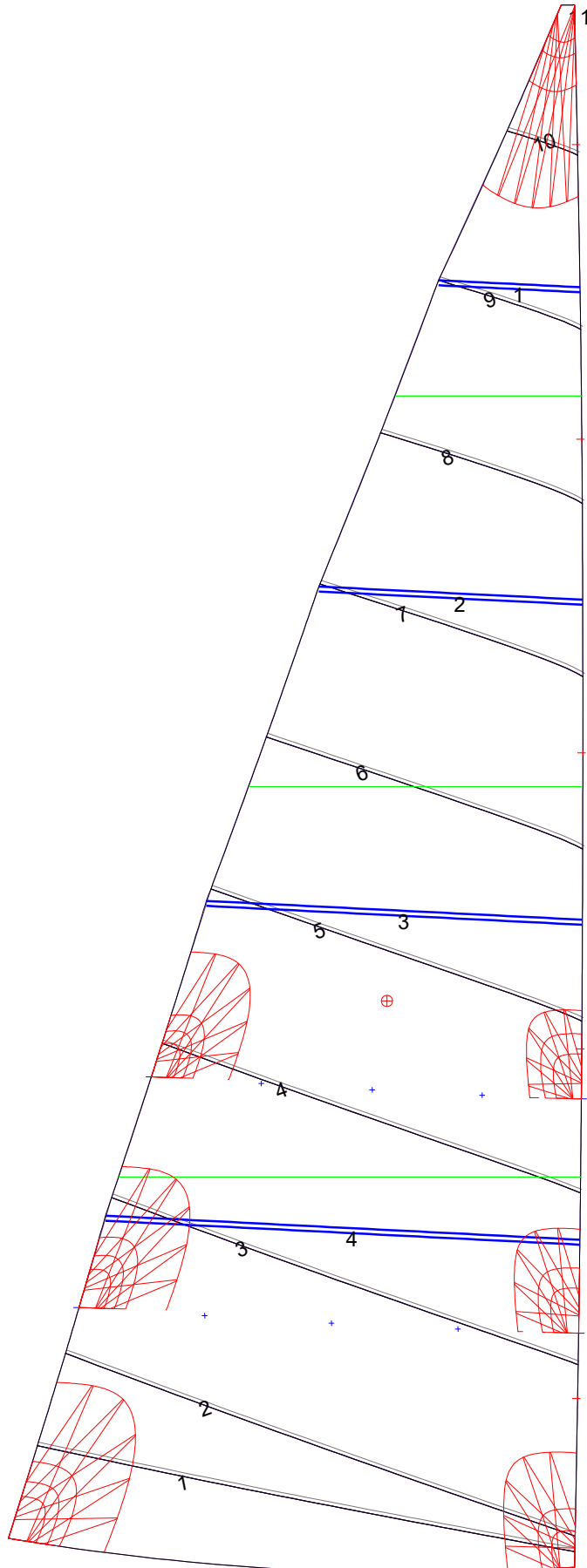
### Luff Slides

1, Position: 1.353m  
2, Position: 4.153m  
3, Position: 6.526m  
4, Position: 9.040m  
5, Position: 11.401m

### Luff Curve

		Fanned Luff (@ 5.00% [0.227m])	Before BSeam
12.519m,	0.000m	100% (12.520m) :	0.000m
10.959m,	-0.032m	90% (11.268m) :	0.017m
9.390m,	-0.055m	80% (10.016m) :	0.032m
7.816m,	-0.065m	70% (8.764m) :	0.041m
6.260m,	-0.066m	60% (7.512m) :	0.044m
4.665m,	-0.061m	50% (6.260m) :	0.043m
3.130m,	-0.049m	40% (5.008m) :	0.039m
1.560m,	-0.028m	30% (3.756m) :	0.032m
0.000m,	0.000m	20% (2.504m) :	0.022m
		10% (1.252m) :	0.010m
		0% (0.000m) :	0.000m

# Mainsail: 7000603 Yoh-1 Yamaha 34S MainsailV1.des



Seam Allowances			
Zone:	Split	Radial	Cross
1	0.030m	0.030m	0.030m

Edge Excesses			
Sail:	Luff	Leech	Foot
	0.000m	0.000m	0.000m

Total Seam Lengths (m)

Horizontal	28.70
Radial/Vertical	0.00
Bi-Radial Split	0.00

Materials

Material	Area (m <sup>2</sup> )	Panels
Material 1	33.31	1,2,3,4,5 6,7,8,9,10 11