

# Mainsail: 6000906 Phil mainsail-V1-0914.des

Design Info  
=====

Design File:  
F:\Dropbox\Dropbox\Fareast Sails\2022 Order\Need confirm order\6000906 Phil\6000906 Phil mainsail-V1-0914.des

Initial Design Date: 10/8/2015  
Boat:

Comments:

Client:

Design Data  
=====

## Main

### Measurements

Luff geodesic: 8.100m  
 Leech geodesic: 8.350m  
 Foot geodesic: 2.500m  
 Head geodesic: 0.115m  
 Upper width (MUW): 0.471m  
 Three-quarter width (MTW): 0.830m  
 Half width (MHW): 1.459m  
 Quarter width (MQW): 2.007m  
 Foot median: 8.210m  
 ORC Mainsail area: 11.344m?  
 Surface area: 11.533m?  
 Clew height: 0.100m  
 Mast rake: 0.000m

### Battens

Position	Length	Roach	Angle	Luff	Leech	Full
80.000%	0.711m	0.066m	75.833?	6.473m	6.675m	Full
60.000%	1.240m	0.090m	75.833?	4.853m	5.007m	Full
40.000%	1.697m	0.075m	75.833?	3.233m	3.338m	Full
20.000%	2.115m	0.043m	75.833?	1.614m	1.669m	Full

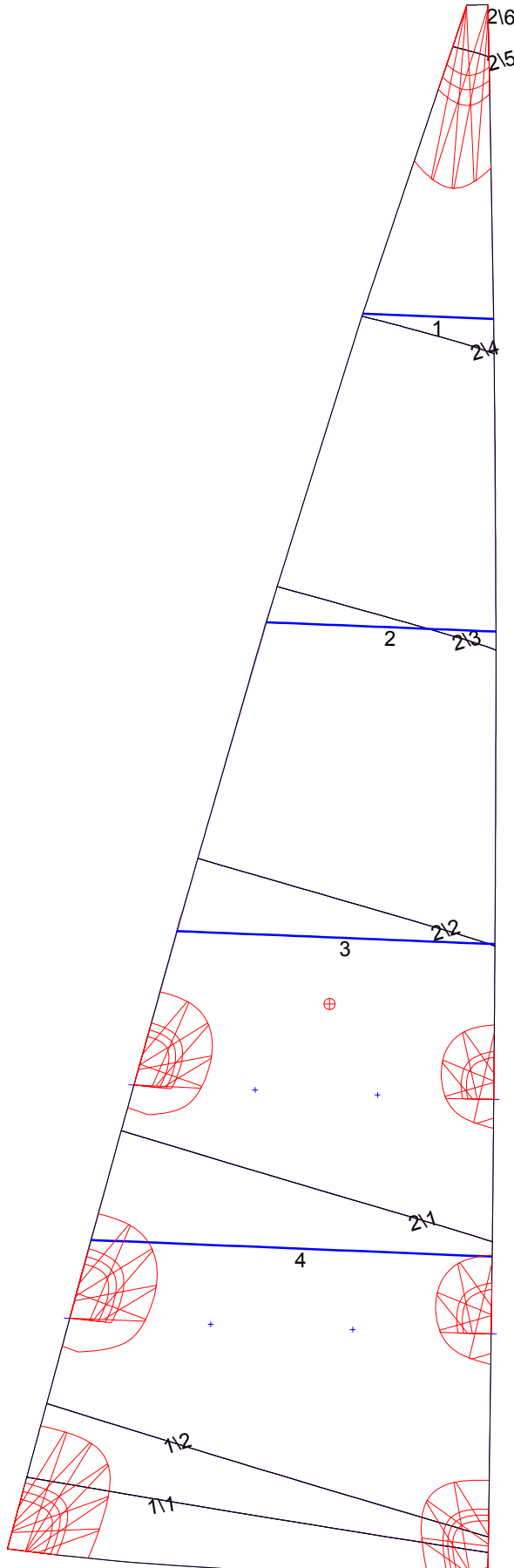
### Reefing Points

1, Luff: 1.214m ; Leech: 1.239m ; Offset: 0.000m ; Number Eyelets: 2  
 2, Luff: 2.429m ; Leech: 2.493m ; Offset: 0.000m ; Number Eyelets: 2

### Luff Curve

		Fanned Luff (@ 5.00% [0.125m])	Before BSeam
8.100m,	0.000m	100% (8.100m) :	0.000m
6.116m,	-0.034m	90% (7.290m) :	0.013m
4.054m,	-0.040m	80% (6.480m) :	0.049m
2.027m,	-0.027m	70% (5.670m) :	0.065m
0.000m,	0.000m	60% (4.860m) :	0.072m
		50% (4.050m) :	0.071m
		40% (3.240m) :	0.066m
		30% (2.430m) :	0.055m
		20% (1.620m) :	0.040m
		10% (0.810m) :	0.020m
		0% (0.000m) :	0.000m

# Mainsail: 6000906 Phil mainsail-V1-0914.des



## Seam Allowances

	Split	Radial	Cross
Zone: 1	0.025m	0.025m	0.025m
Zone: 2	0.025m	0.025m	0.025m

## Edge Excesses

Sail:	Luff	Leech	Foot
	0.000m	0.000m	0.000m

## Total Seam Lengths (m)

Horizontal	10.70
Radial/Vertical	0.00
Bi-Radial Split	0.00

## Materials

Material	Area (m <sup>2</sup> )	Panels
Material 1	11.54	1/1, 1/2, 2/1, 2/2, 2/3, 2/4, 2/5, 2/6